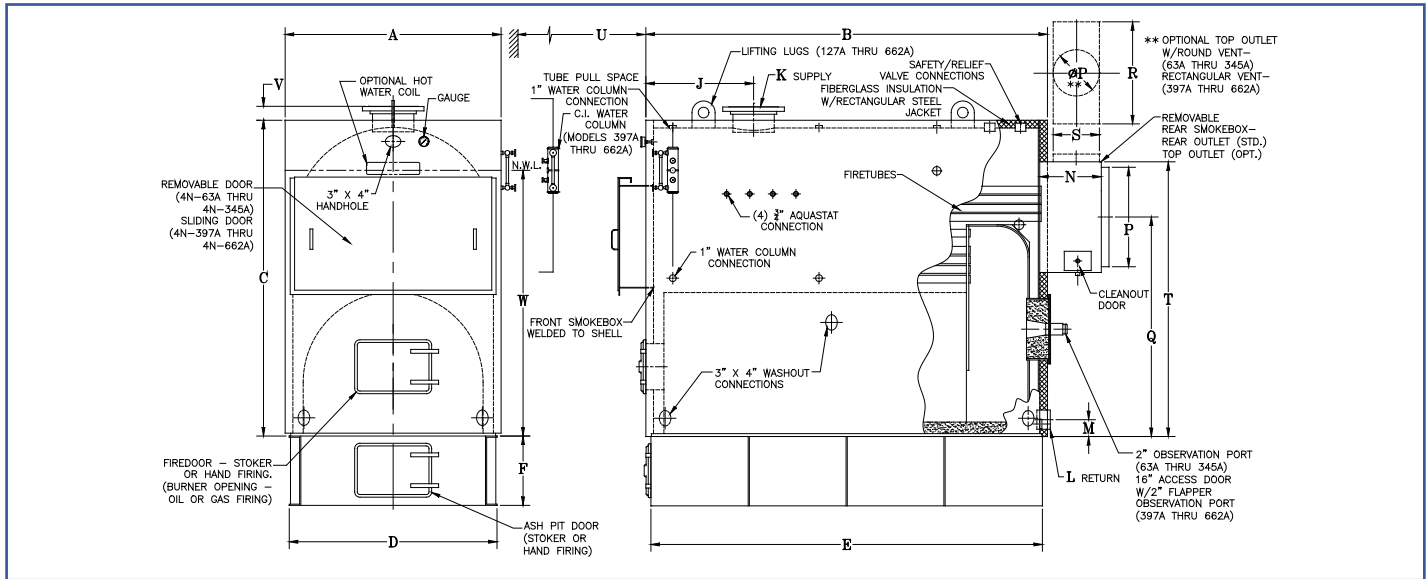


Series 4N — Models 63 - 662



Dimensions

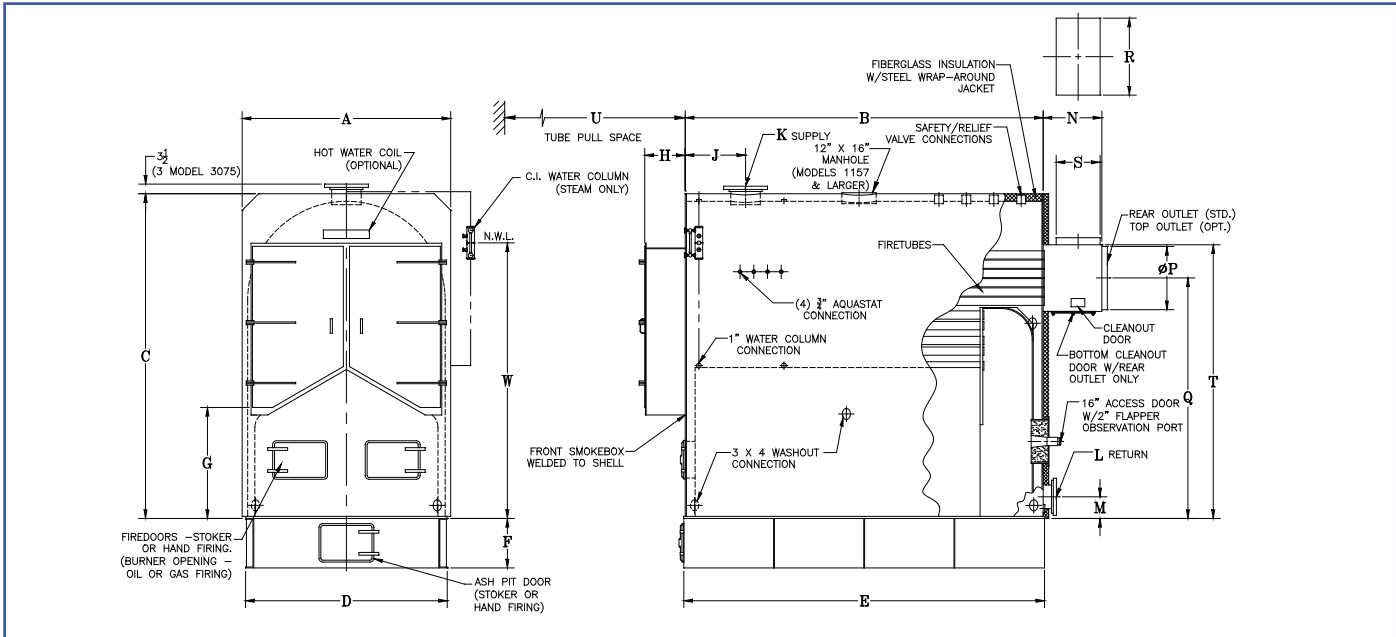
4N Boiler Models	63	78	92	107	127	154	180	209	240	277	311	345	397	463	563	662
A - Boiler Width	30-1/4	30-1/4	30-1/4	30-1/4	35-7/8	35-7/8	35-7/8	35-7/8	44-5/8	44-5/8	44-5/8	44-5/8	52-1/4	52-1/4	56	56
B - Boiler Length	30	37	43-1/2	50-1/2	42-1/2	51	59	68	55	63	70-1/2	78	76-3/4	89-1/4	100-3/8	118-1/4
C - Boiler Height	52-1/8	52-1/8	52-1/8	52-1/8	60-1/2	60-1/2	60-1/2	60-1/2	67-1/2	67-1/2	67-1/2	67-1/2	79-1/4	79-1/4	82	82
D - Base Width	29-3/4	29-3/4	29-3/4	29-3/4	35-1/8	35-1/8	35-1/8	35-1/8	43-7/8	43-7/8	43-7/8	43-7/8	50-1/8	50-1/8	54	54
E - Base Length	30-1/2	37-1/2	44	51	43	51-1/2	59-1/2	68-1/2	55-1/2	63-1/2	71	78-1/2	78-1/8	90-5/8	101-3/4	119-5/8
*F - Base Height	15	15	15	15	18	18	18	18	18	18	18	18	18	18	18	18
G - Front Smoke Box Height	22-3/4	22-3/4	22-3/4	22-3/4	24-7/8	24-7/8	24-7/8	24-7/8	30-5/8	30-5/8	30-5/8	30-5/8	33-5/8	33-5/8	36-3/4	36-3/4
H - Front Smoke Box Depth	6-1/2	6-1/2	6-1/2	6-1/2	7-1/2	7-1/2	7-1/2	7-1/2	8-1/2	8-1/2	8-1/2	8-1/4	8-1/4	8-1/4	9-3/4	9-3/4
J - Supply Location	12	12	12	12	15	15	15	15	18	18	18	18	26	26	26	26
**K - Supply Size	4	4	4	4	6	6	6	6	6	8	8	8	8	10	10	10
L - Return Size	3	3	3	3	4	4	4	4	4	4	4	4	4	4	4	4
M - Return Location	3-1/2	3-1/2	3-1/2	3-1/2	4	4	4	4	4	4	4	4	4-3/8	4-3/8	4-3/8	4-3/8
N - Smoke Box Depth - Top Rear	8 16-1/2	8 16-1/2	8 16-1/2	8 16-1/2	9 20-1/2	9 20-1/2	9 20-1/2	9 20-1/2	10 22-1/2	10 22-1/2	10 22-1/2	10 22-1/2	16 16	16 16	16 16	16 16
P - Vent Collar Diameter	14	14	14	14	18	18	18	18	20	20	20	20	20	24	26	28
Q - Rear Vent Collar Height	33-7/8	33-7/8	33-7/8	33-7/8	40	40	40	40	46	46	46	46	51-1/2	51-1/2	52-3/8	52-3/8
R - Smoke Box Collar Width Top Vent	—	—	—	—	—	—	—	—	—	—	—	—	35-1/4	35-1/4	42-1/2	42-1/2
S - Smoke Box Collar Depth Top Vent	—	—	—	—	—	—	—	—	—	—	—	—	10	13	12	13
T - Top Vent Collar Height	41-7/8	41-7/8	41-7/8	41-7/8	49-1/8	49-1/8	49-1/8	49-1/8	57	57	57	57	64	64	66-7/8	66-7/8
U - Tube Pull Space	32	39	45-1/2	52-1/2	44-1/2	53	61	70	57	65	72-1/2	80	81	94	105	23
V - Supply Fitting Height	1-5/8	1-5/8	1-5/8	1-5/8	3-3/8	3-3/8	3-3/8	3-3/8	3-3/8	3-3/8	3-3/8	3-3/8	3-1/2	3-1/2	3-5/8	3-5/8
W - Normal Water Line Height	40-3/4	40-3/4	40-3/4	40-3/4	48-1/2	48-1/2	48-1/2	48-1/2	55	55	55	55	66-3/16	66-3/16	69	69

*Oil, Gas, Stoker Only - See note below rating table for hand-fired boilers.

**4" is IPS female thread, 6" and larger are flanged

Specifications, dimensions data subject to change without notice.

Series 4N — Models 827 - 3075



Dimensions

4N Boiler Models	827	993	1157	1323	1654	1985	2315	2645	3075
A - Boiler Width	64	64	70	70	76	82	82	82	96
B - Boiler Length	106-1/4	129	116-1/2	136	130-1/2	128	148	162	163
*C - Boiler Height	91	91	102-1/2	102-1/2	118-1/8	138-1/8	138-1/8	138-1/8	148
D - Base Width	61-1/2	61-1/2	67-1/2	67-1/2	73-1/2	79-1/2	79-1/2	79-1/2	93-1/2
E - Base Length	107-1/4	130	117-1/2	137	131-1/2	129	149	164	164
F - Base Height	18	18	18	18	18	18	18	18	18
G - Front Smoke Box Door Height	29-5/16	29-5/16	35-7/16	35-7/16	40-3/8	52-1/8	52-1/8	52-1/8	65-7/8
H - Front Smoke Box Depth	12-3/4	12-3/4	13-3/4	13-3/4	14-3/4	15-3/4	15-3/4	15-3/4	16-1/2
J - Supply Location	22	22	22	22	22	22	22	22	68
**K - Supply Size	8	8	8	8	10	12	12	12	12
**L - Return Size - Steam	4	4	4	6	6	6	6	6	6
**L - Return Size - Water	6	6	6	8	8	8	8	8	8
M - Return Location	6	6	6-7/8	6-7/8	6-7/8	7-1/4	7-1/4	7-1/4	7
N - Smoke Box Depth Rear	20-3/4	20-3/4	22-3/4	22-3/4	22-3/4	24-3/4	24-3/4	24-3/4	26
P - Rear Vent Collar Diameter	28	32	32	35	38	44	44	44	46
Q - Rear Vent Collar Height	71-1/2	71-1/2	81-1/2	81-1/2	94-5/8	110-5/8	110-5/8	110-5/8	119
R - Top Vent Collar Width	48	48	51	51	55	72	72	72	84
S - Top Vent Collar Depth	14	17	16	19	16	18	18	18	22
T - Top Vent Collar Height	87-3/4	87-3/4	99-1/4	99-1/4	113-7/8	132-7/8	132-7/8	132-7/8	142
U - Tube Pull Space	108	131	118-1/2	138	132-1/2	130	150	165	165
W - Normal Water Line Height	74	74	85-1/2	85-1/2	100-1/4	114-1/4	114-1/4	114-1/4	122-1/2

*Oil, Gas, Stoker Only - See note below rating table for hand-fired boilers.

**4" is IPS female thread, 6" and larger are flanged

Specifications, dimensions data subject to change without notice.