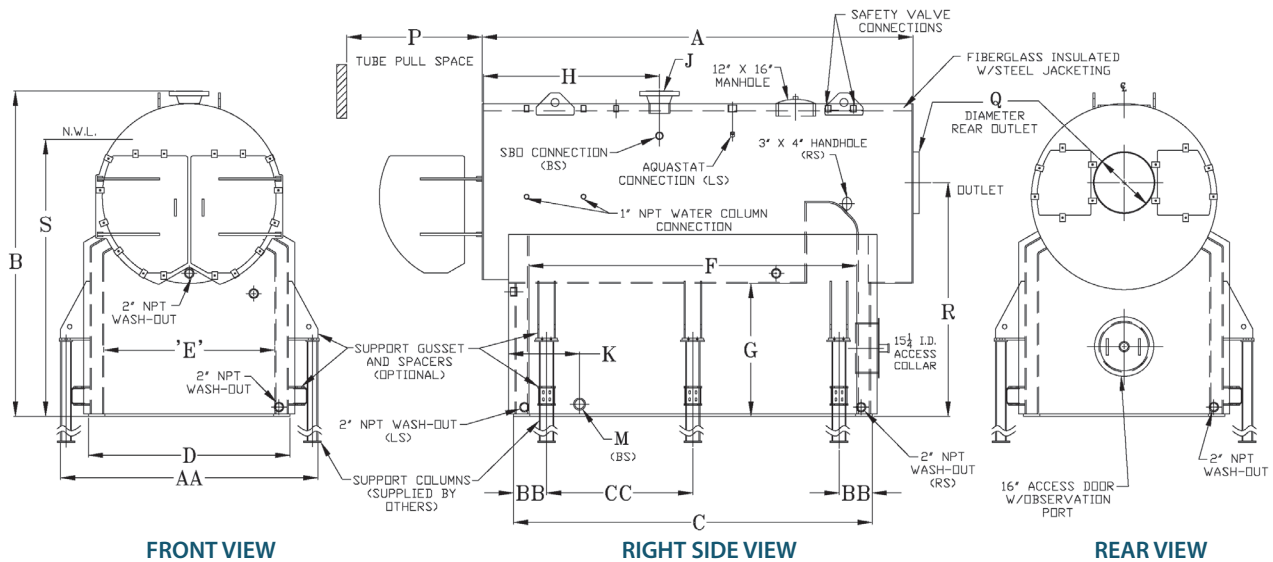


# Series 4NP NATURAL DRAFT FIREBOX BOILER



## High Pressure Steam Boilers

4NP BOILER MODELS	625	925	1250	1538	1850	2153	2500	3075	3690	4305
A - Boiler Length	141	152	164	165	169	177	192	191	214	243
B - Boiler Supply Height	95	103	113	127	145	151	151	151	151	151
C - Base Length at Mudleg	125	136	142	143	143	151	166	161	184	213
D - Boiler Width at Mudleg	62	68	74	80	86	92	92	104	104	110
E - Firebox Width	48	54	60	66	72	78	78	90	90	96
F - Firebox Length	112	123	129	130	130	138	153	148	171	200
G - Firebox Height	40	42	46	54	66	66	66	54	54	54
H - Supply Location	65	71	75	75	77	79	87	86	98	112
J - Supply Nozzle Size (300 Lb. Flg.)	4	6	6	6	8	8	8	8	10	10
K - Return Connection Location	31-1/2	31-1/2	31-1/2	31-1/2	31-1/2	31-1/2	31-1/2	31-1/2	31-1/2	31-1/2
M - Return Connection Size	1-1/2	1-1/2	1-1/2	2	2	2-1/2	3	3	3	3
N - Front Smoke Box Depth	10	10	12	12	14	14	14	16	16	16
P - Tube Removal Space	117	128	132	133	131	139	154	147	170	199
Q - Rear Flue Outlet Diameter	27	32	39	45	45	45	48	48	48	51
R - Base to Flue Centerline	67-3/4	73-1/4	81-15/16	91-5/8	109-9/16	112-9/16	112-9/16	107-7/16	107-7/16	107-7/16
S - Normal Water Line	76-1/2	83-7/8	92-5/16	104-1/4	121-1/4	125-13/16	125-13/16	122-3/8	122-3/8	122-3/8
AA - Width Over Columns	81	87	93	99	105	111	111	123	123	123
BB - Front and Rear Column Location	17	17	17	17	17	17	17	17	17	17
CC - Middle Column Location	46	54	54	55	55	61	69	64	78	85
Approximate Dry Weight (Lbs.)	16,211	19,675	24,562	27,390	32,595	39,030	40,190	46,370	55,000	61,996
Approximate Weight, Full (Lbs.)	22,575	28,055	34,458	39,469	46,598	56,156	58,591	67,911	79,165	90,160

All specifications, dimensions and data subject to change without notice. Dimensions shown are measured in inches.

# Series 4NP RATINGS

BOILER MODEL	GROSS RATINGS			NET RATINGS			MAX. FIRING RATE- SINGLE FUEL			HEATING SURFACE SQ. FT.		
	MBH	HP	Lbs. Stm./Hr.	Steam MBH	Sq. Ft. Steam	Gas MBH	#2 Oil GPH	#6 Oil GPH	#Lbs./Hr. Coal*	Fire Side	Furnace Volume Cu. Ft.	Water Content Gallons (Steam)
4NP625-62	3,348	100	3,450	2,598	10,825	4,185	30.3	27.9	328*	625	148.5	764
4NP925-62	5,021	150	5,175	3,896	16,233	6,276	45.5	41.8	492*	925	186.6	1,006
4NP1250-62	6,695	200	6,900	5,195	21,646	8,369	60.6	55.8	656*	1,250	238.0	1,188
4NP1538-62	8,369	250	8,625	6,494	27,058	10,461	75.8	69.7	820*	1,538	315.7	1,450
4NP1850-62	10,043	300	10,350	7,793	32,471	12,554	91.0	83.7	984*	1,850	407.7	1,681
4NP2153-62	11,716	350	12,075	9,092	37,883	14,645	106.1	97.6	1148*	2,153	471.9	2,056
4NP2500-62	13,390	400	13,800	10,391	43,296	16,738	121.3	111.6	1312*	2,500	521.3	2,209
4NP3075-62	16,738	500	17,250	12,989	54,121	20,923	151.6	139.5	1,640*	3,075	500.42	2,586
4NP3690-62	20,085	600	20,700	15,586	64,942	25,106	181.9	167.4	1,968*	3,690	574.05	2,901
4NP4305-62	23,433	700	24,150	18,184	75,767	29,291	212.3	195.3	2,296*	4,305	716.22	3,381

4NP625-50	4,184	125	4,312	3,247	13,529	5,230	37.9	34.9	282**	625	148.5	764
4NP925-50	6,193	185	6,383	4,806	20,025	7,741	56.1	51.6	417**	925	186.6	1,006
4NP1250-50	8,369	250	8,625	6,494	27,058	10,461	75.8	69.7	563**	1,250	238.0	1,188
4NP1538-50	10,043	300	10,350	7,793	32,471	12,554	91.0	83.7	676**	1,538	315.7	1,450
4NP1850-50	12,386	370	12,765	9,612	40,050	15,483	112.2	103.2	834**	1,850	407.7	1,681
4NP2153-50	14,394	430	14,835	11,170	46,542	17,993	130.4	119.9	969**	2,153	471.9	2,056
4NP2500-50	16,738	500	17,250	12,989	54,121	20,923	151.6	139.5	1,127**	2,500	521.3	2,209
4NP3075-50	20,085	600	20,700	15,586	64,942	25,106	181.9	167.4	1,352**	3,075	500.42	2,586
4NP3690-50	23,433	700	24,150	18,184	75,767	29,291	212.3	195.3	1,577**	3,690	574.05	2,901
4NP4305-50	28,454	850	29,325	22,080	92,001	35,568	257.7	237.1	1915**	4,305	716.22	3,381

#### NOTES:

- Boiler model suffix "62" indicates 6.15 sq. ft. F.S.H.S. /HP and "50" indicates 5 sq. ft. F.S.H.S./HP.
- Firing rate based on:
  - Natural gas @ 1000 BTU/cu. ft. and 80% heat transfer efficiency.
  - #2 oil @ 138 MBH/gal. and 80% heat transfer efficiency.
  - #6 oil @ 150 MBH/gal. and 80% heat transfer efficiency.
  - \* 100% coal input @ 13,000 BTU/pound and 78.5% heat transfer efficiency (6.15 rating).
  - \*\* Coal input @ 13,000 BTU/pound limited to 70% of input in order to develop 5 sq. ft. rating.
- Furnace volume is measured from the bottom of the boiler mud leg (no deduction for bridgeway).
- Approximate dry weight includes H columns and base casing.



©2012 Burnham Commercial  
 P.O. Box 3939 • Lancaster, PA 17604  
 Phone: 888.791.3790 • Fax: 717.293.5803  
[www.burnhamcommercial.com](http://www.burnhamcommercial.com)

Form No. PL81465521005-12/12-1Mc  
 Printed in the U.S.A.