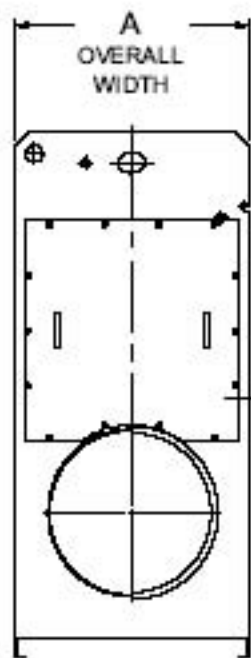


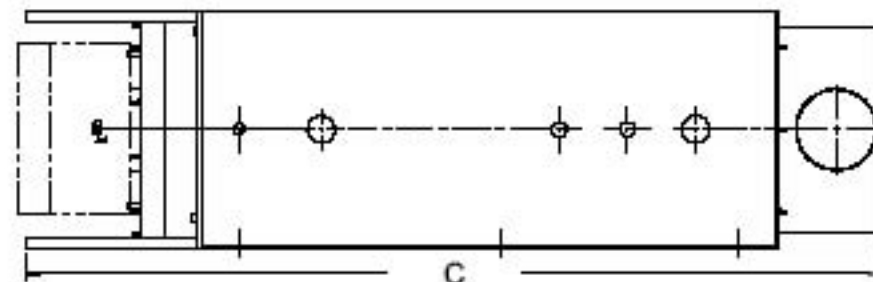
C SERIES DIMENSIONS

| BHP | A | B | C |
|-----|--------|--------|---------|
| 20 | 30 | 66-3/8 | 75-5/8 |
| 30 | 30 | 66-3/8 | 82-5/8 |
| 40 | 34-1/2 | 73-7/8 | 90-1/8 |
| 50 | 34-1/2 | 75-3/8 | 100-5/8 |
| 60 | 34-1/2 | 75-3/8 | 113-1/8 |
| 70 | 34-1/2 | 78-1/2 | 114-5/8 |
| 80 | 34-1/2 | 78-1/2 | 125-1/8 |
| 90 | 34-1/2 | 78-1/2 | 135-1/8 |
| 100 | 34-1/2 | 78-1/2 | 145-1/8 |

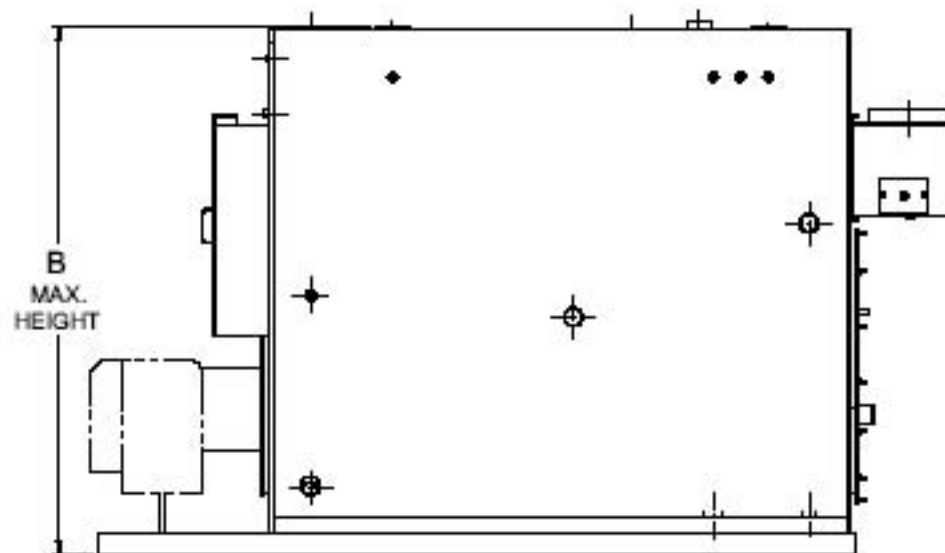


FRONT VIEW

SPECIFICATIONS SUBJECT TO CHANGE WITHOUT NOTICE ALL CONNECTIONS ARE THREADED UNLESS OTHERWISE SPECIFIED



PLAN VIEW



SIDE VIEW