

C SERIES RATINGS AND DIMENSIONS

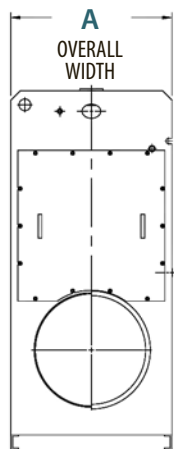
C Series Ratings

Boiler HP	GROSS OUTPUT			NET RATING		SQ FT NET	FIRING RATE			
	A	B	C	MBH	Lbs/Hr	Water - MBH	Steam - MBH	Steam	Gas - MBH	#2 Oil - GPH
20	30	66-3/8	75-5/8	670	690	582	520	2,166	816	5.7
30	30	66-3/8	82-5/8	1,004	1,035	873	780	3,249	1,225	8.5
40	34-1/2	73-7/8	90-1/8	1,339	1,380	1,164	1,040	4,332	1,633	11.4
50	34-1/2	75-3/8	100-5/8	1,674	1,725	1,455	1,299	5,415	2,041	14.2
60	34-1/2	75-3/8	113-1/8	2,009	2,070	1,747	1,559	6,497	2,449	17.1
70	34-1/2	78-1/2	114-5/8	2,343	2,415	2,038	1,819	7,580	2,858	19.9
80	34-1/2	78-1/2	125-1/8	2,678	2,760	2,329	2,079	8,663	3,266	22.8
90	34-1/2	78-1/2	135-1/8	3,013	3,105	2,620	2,339	9,746	3,674	25.6
100	34-1/2	78-1/2	145-1/8	3,348	3,450	2,911	2,599	10,829	4,082	28.5
125	50-3/4	94-3/4	138	4,184	4,312	3,638	3,248	13,533	5,102	35.6
150	50-3/4	94-3/4	154-1/2	5,021	5,175	4,366	3,898	16,242	6,123	42.7
175	50-3/4	94-3/4	170-3/4	5,858	6,037	5,094	4,548	18,950	7,144	49.8
200	50-3/4	94-3/4	187	6,695	6,900	5,822	5,198	21,658	8,165	56.9

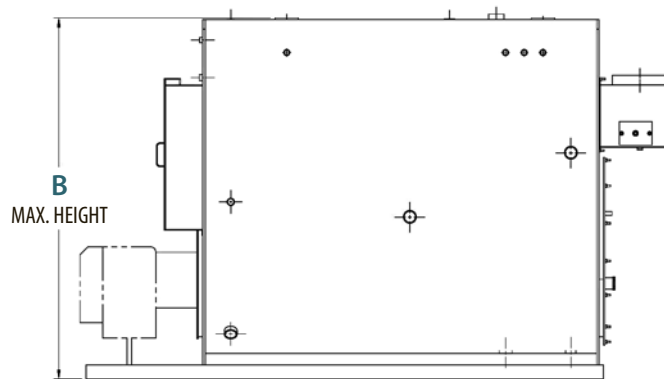
Firing rates are nominal catalog rates based on 82% efficiency firing natural gas and 84% firing #2 oil.
Higher efficiencies can be expected as shown on page 3.

C Series Dimensions

PAGE 4

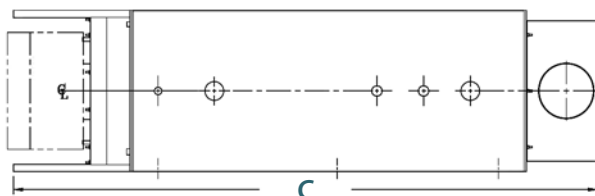


FRONT VIEW



SIDE VIEW

Specifications subject to change without notice.
All connections are threaded unless otherwise specified.



PLAN VIEW



©2010 Burnham® Commercial
Lancaster, PA 17603

P: 888.791.3790

www.burnhamcommercial.com

Form No. PL81465512000-12/10-5Ms
Printed in the U.S.A.