

BURNHAM®

Commercial Boilers

RATINGS AND DATA

Shell Diameter : 45 $\frac{1}{4}$ "
 Gross Output - BHP : 152.7
 Gross Output - MBH : 5113
 Gross Output - Lbs/Hr. : 5270
 Net Rating - MBH : 3969
 Safety Valve - Lbs/Hr. : 5270

Heating Surface - Sq. Ft.
 Fireside - 551
 Firetubes
 Number - 126
 Diameter - 2" O.D.

Firing Rate
 1000 BTU Gas (MBH) - 6123
 140000 BTU/Gal Oil (GPH) - 42.0

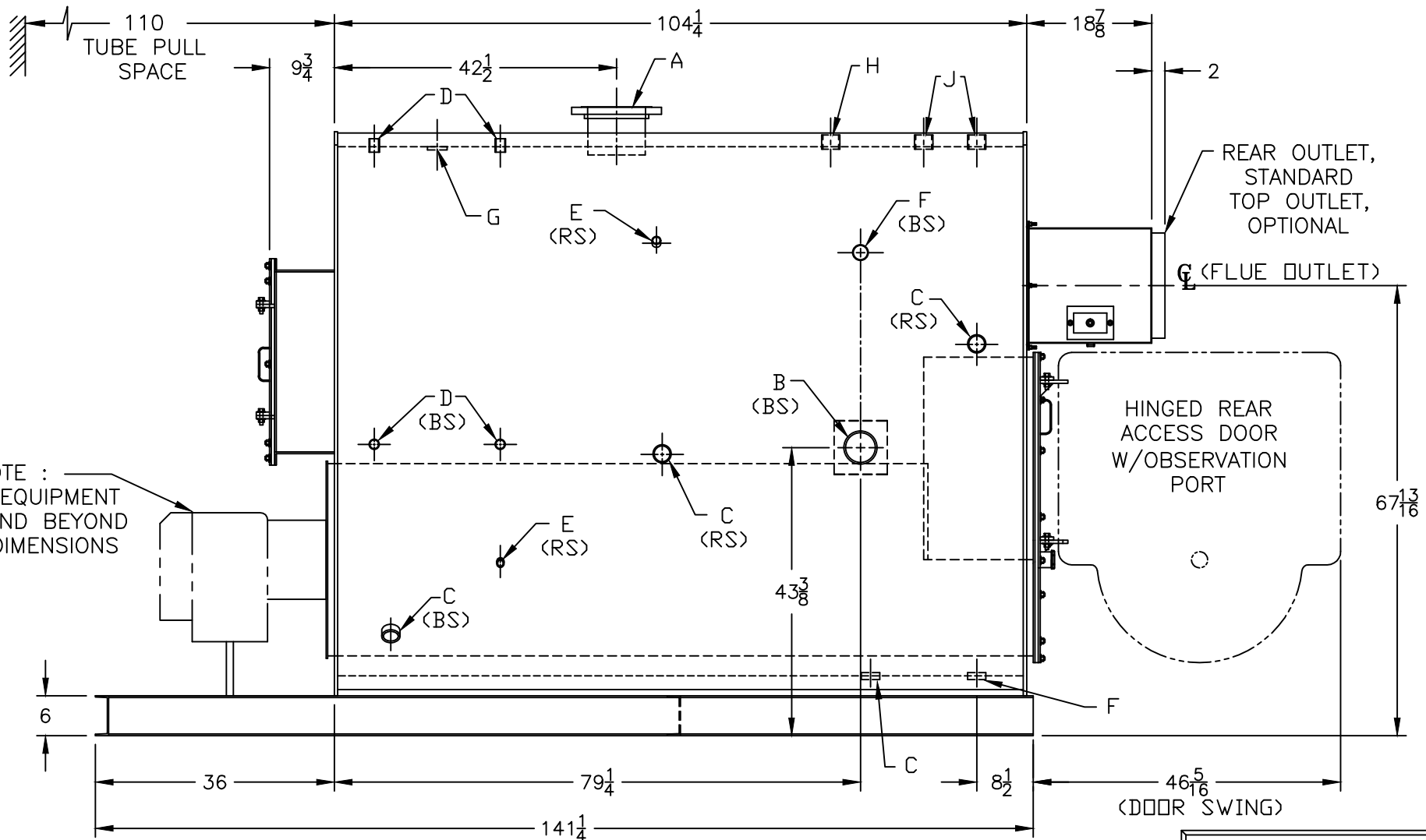
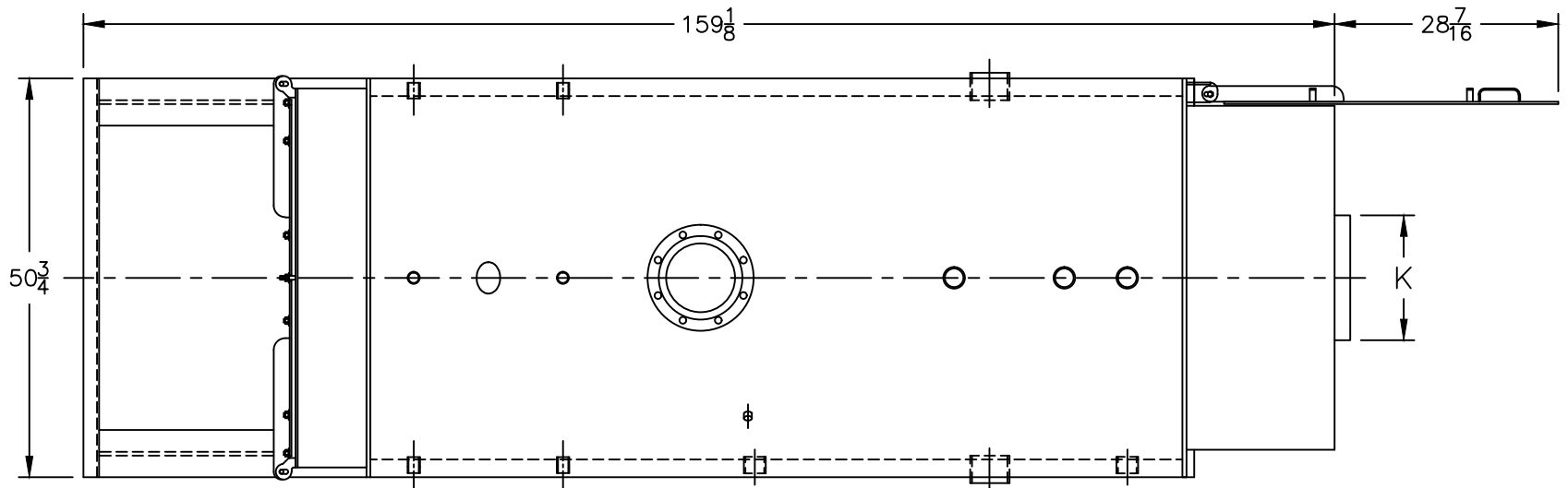
Water Content
 Pounds - 5690
 Gallons (U.S.) - 683
 Approximate Weight/LBS.
 Dry - 10279
 Wet - 15969

LEGEND CONNECTIONS

- A = 8" FLANGED SUPPLY (150#)
- B = 4" RETURN
- C = 2" WASHOUT
- D = 1" WATER COLUMN
- E = 3/4" AQUASTAT
- F = 2" SURFACE BLOWOFF/BOTTOM BLOWDOWN
- G = 3 X 4 HANDHOLE
- H = 2" AUXILIARY CONNECTION
- J = 2" SAFETY VALVE
- K = 16" NOMINAL FLUE DIAMETER

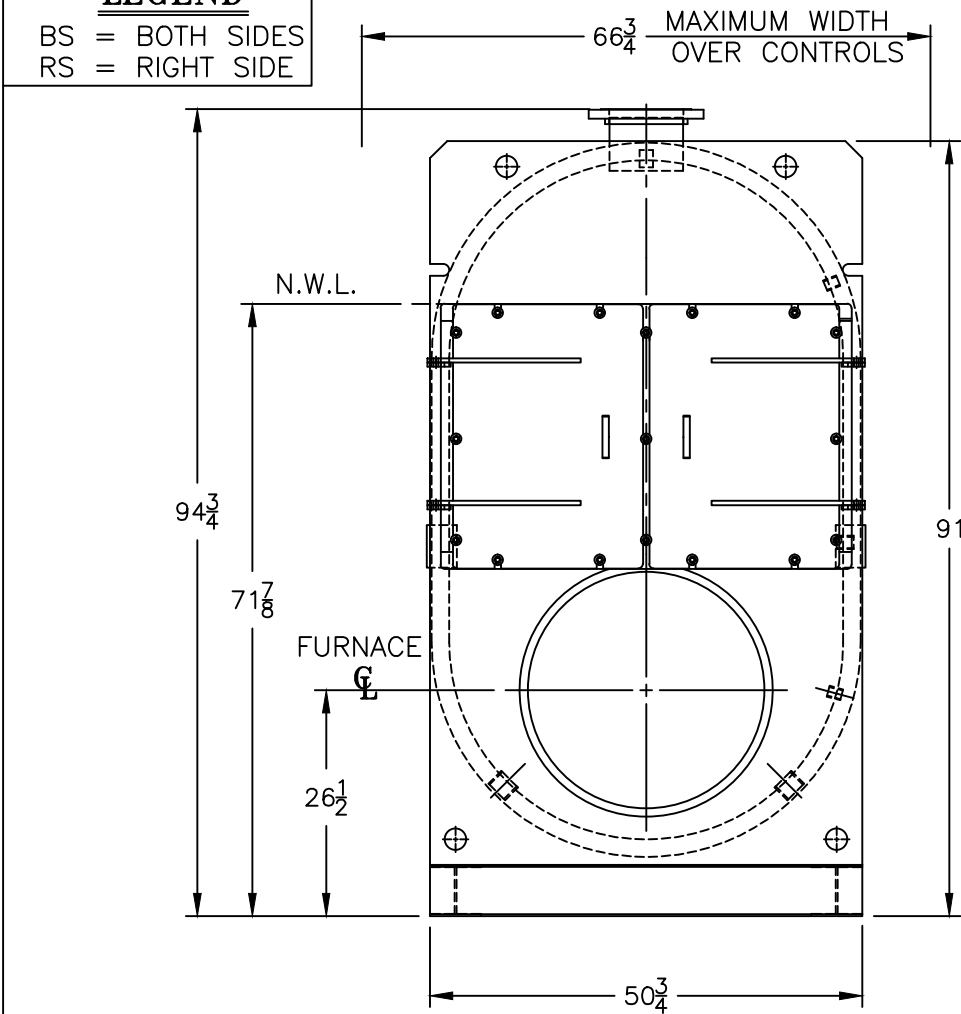
LEGEND

- BS = BOTH SIDES
- RS = RIGHT SIDE



NOTE :
 BURNER EQUIPMENT
 MAY EXTEND BEYOND
 BOILER DIMENSIONS

MODEL CL-150A
152.7 BHP
15 PSI STEAM



SPECIFICATIONS SUBJECT TO CHANGE WITHOUT NOTICE ALL CONNECTIONS ARE THREADED UNLESS OTHERWISE SPECIFIED
 THIS DOCUMENT CONTAINS CONFIDENTIAL INFORMATION WHICH IS THE PROPERTY OF BURNHAM COMMERCIAL. THIS DOCUMENT MAY NOT BE REPRODUCED, TRANSFERRED OR USED, OR ITS CONTENTS DISCLOSED, WITHOUT THE WRITTEN PERMISSION OF THE OWNER.