

# BURNHAM®

## Commercial Boilers

### RATINGS AND DATA

Shell Diameter : 54"  
 Gross Output - BHP : 90  
 Gross Output - MBH : 3013  
 Gross Output - Lbs/Hr : 3105  
 Net Rating - MBH : 2339  
 Net Rating - Sq. Ft. : 9746  
 Safety Valve - Lbs/Hr. : 3515

Heating Surface - Sq. Ft.  
 Fireside - 450  
 Firetubes  
 Number - 106  
 Diameter - 2" O.D.

Firing Rate  
 1000 BTU Gas (MBH) - 3766  
 140000 BTU/Gal Oil (GPH) - 25.9  
 150000 BTU/Gal Oil (GPH) - 24.2

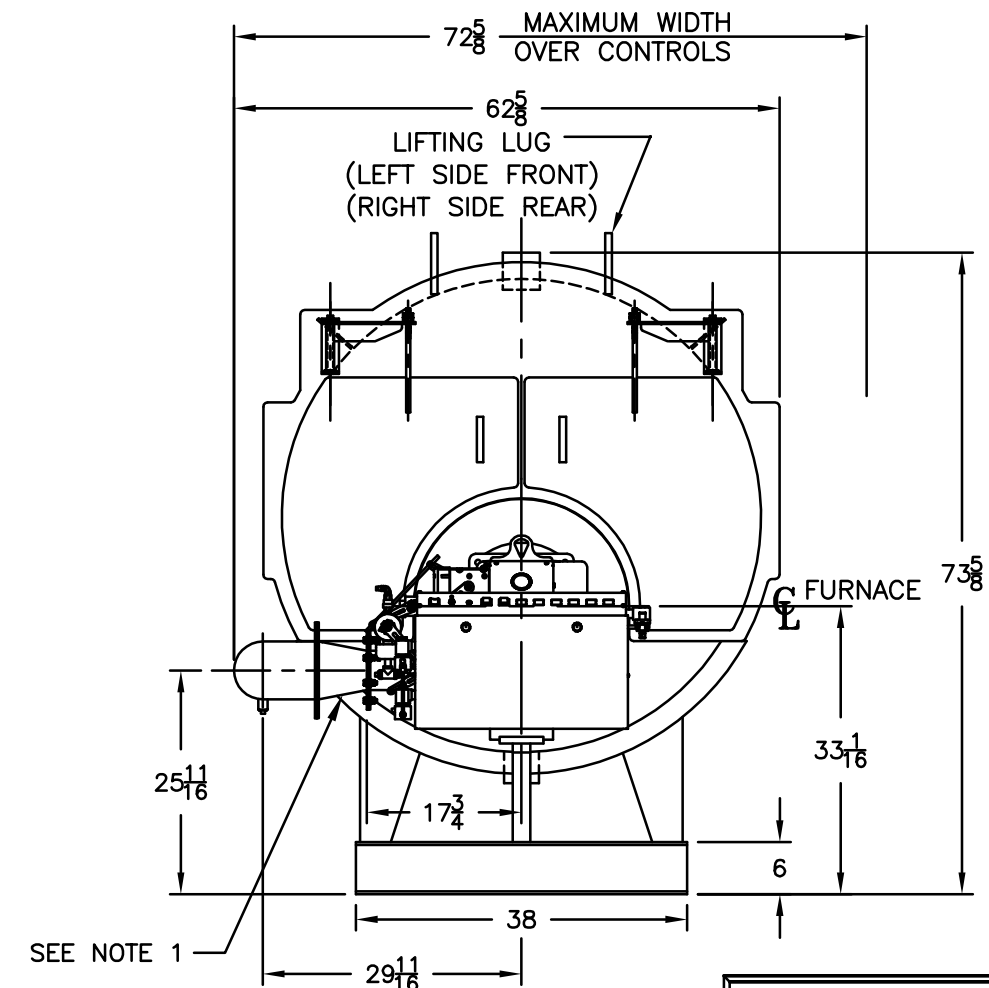
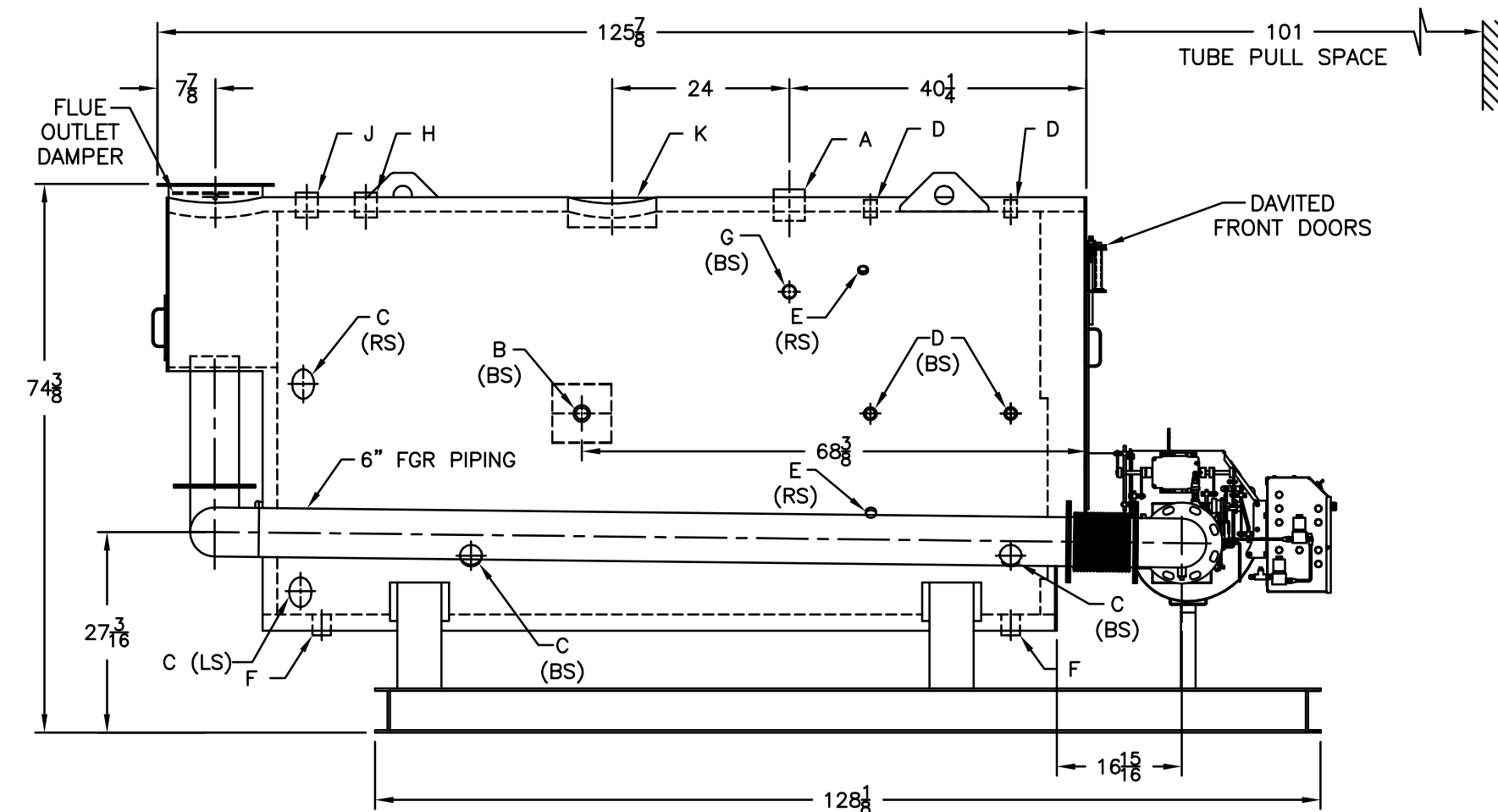
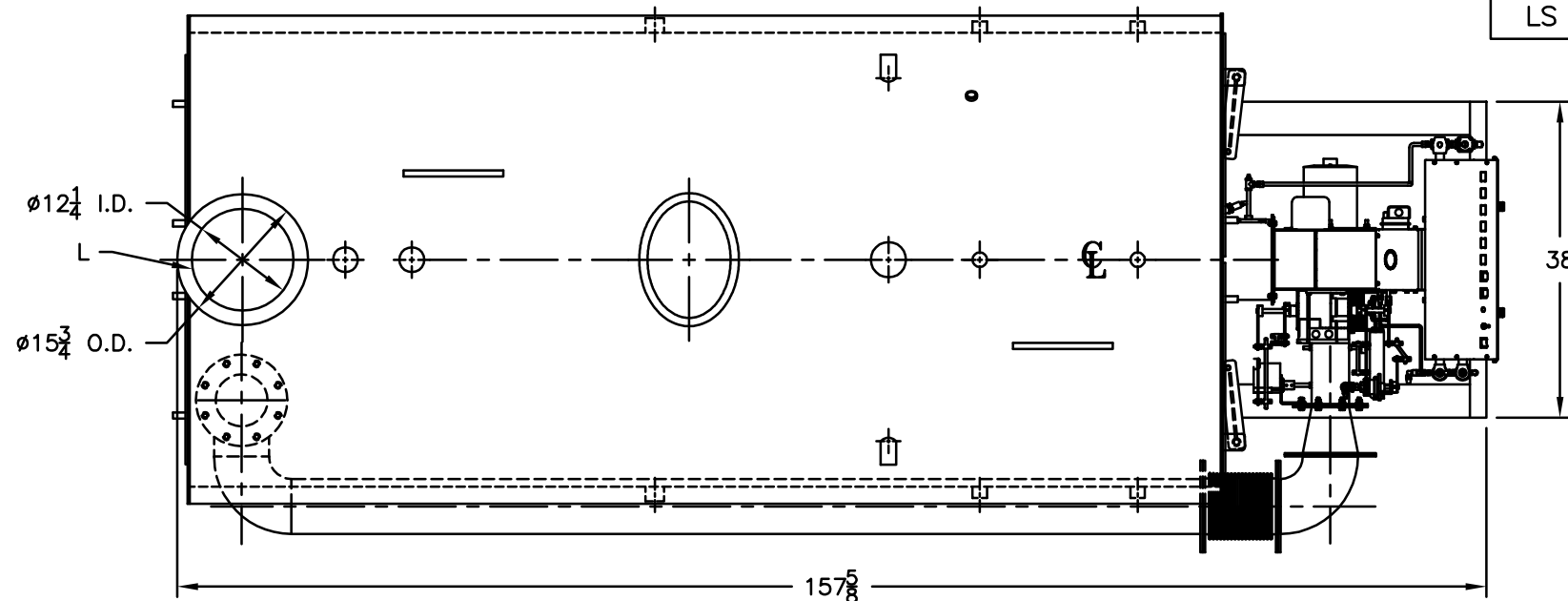
Water Content  
 Pounds - 4637  
 Gallons (U.S.) - 557  
 Approximate Weight/LBS.  
 Dry - 7339  
 Wet - 11975

### LEGEND

BS = BOTH SIDES  
 RS = RIGHT SIDE  
 LS = LEFT SIDE

### LEGEND CONNECTIONS

A = 3" SUPPLY  
 B = 1-1/4" RETURN  
 C = 3" x 4" HANDHOLE  
 D = 1" WATER COLUMN  
 E = 3/4" AQUASTAT  
 F = 1-1/2" BOTTOM BLOWDOWN  
 G = 1-1/2" SURFACE BLOWOFF  
 H = 2" AUXILIARY CONNECTION  
 J = 2" SAFETY VALVE  
 K = 12" X 16" MANHOLE  
 L = 12" NOMINAL FLUE DIAMETER



NOTES:  
 1. FGR REDUCING FITTING MAY BE REQUIRED BASED ON FGR INLET SIZE ON BURNER.

**MODEL LN3P-90**  
**90 BHP**  
**POWERFLAME LNIC3**  
**150 PSI STEAM**