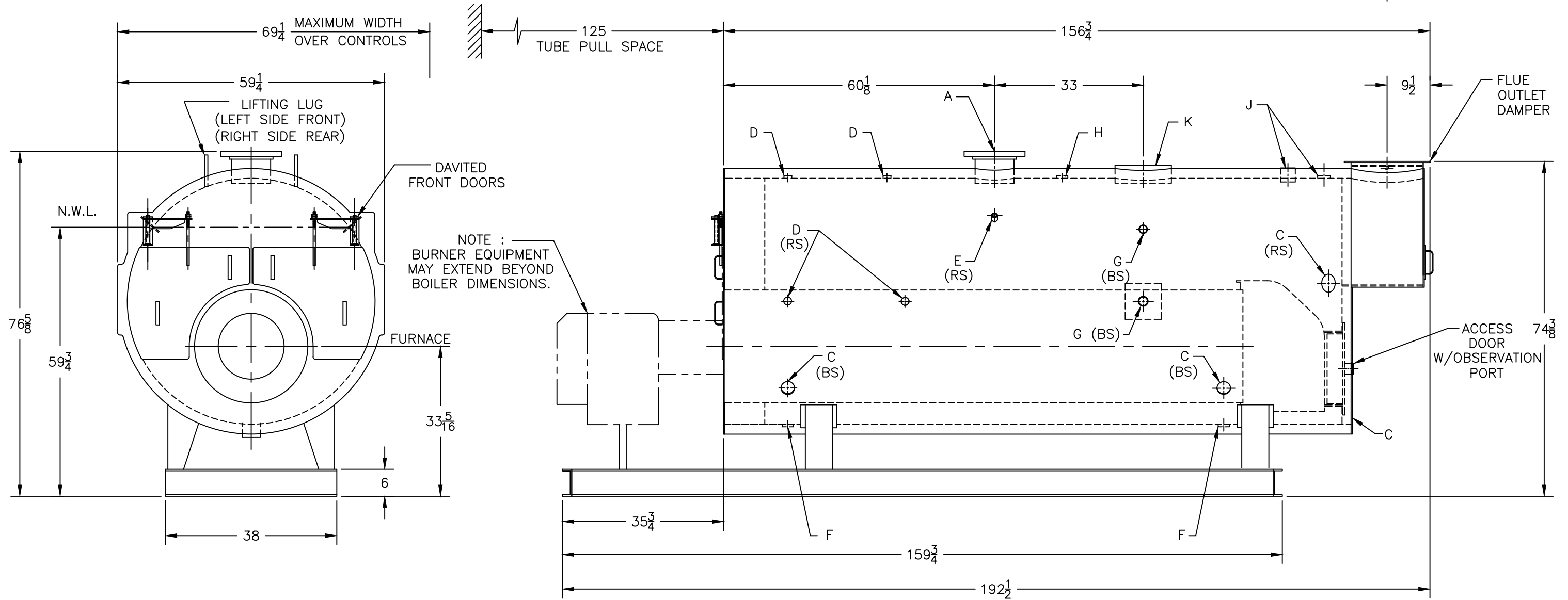
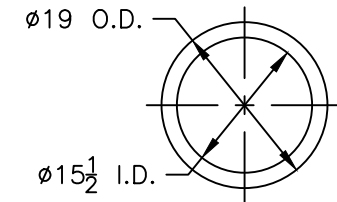


BURNHAM[®]
Commercial Boilers

LEGEND CONNECTIONS

- | | | |
|-----------------------|------------------------|-------------------------|
| A = 8" FLANGED SUPPLY | E = 3/4" AQUASTAT | J = 2" SAFETY VALVE (1) |
| B = 1-1/2" RETURN | F = 2" BOTTOM BLOWDOWN | 2-1/2" SAFETY VALVE (1) |
| C = 3" x 4" HANDHOLE | G = 2" SURFACE BLOWOFF | K = 12" X 16" MANHOLE |
| D = 1" WATER COLUMN | H = 2" CHEMICAL FEED | |



SPECIFICATIONS SUBJECT TO CHANGE WITHOUT NOTICE
ALL CONNECTIONS ARE THREADED UNLESS OTHERWISE SPECIFIED

RATINGS AND DATA

Shell Diameter : 54"
Gross Output - BHP : 175
Gross Output - MBH : 5858
Gross Output - Lbs/Hr : 6037
Safety Valve - Lbs/Hr. : 6037

Heating Surface - Square Feet
Fireside - 358
Firetubes
Number - 46
Diameter - 2-1/2"

Firing Rate
1000 BTU Gas (MBH) - 7323
140000 BTU/GAL (GPH) - 52.3
150000 BTU/GAL (GPH) - 48.8

MODEL 3L-175XH
175 BHP
15 PSI STEAM