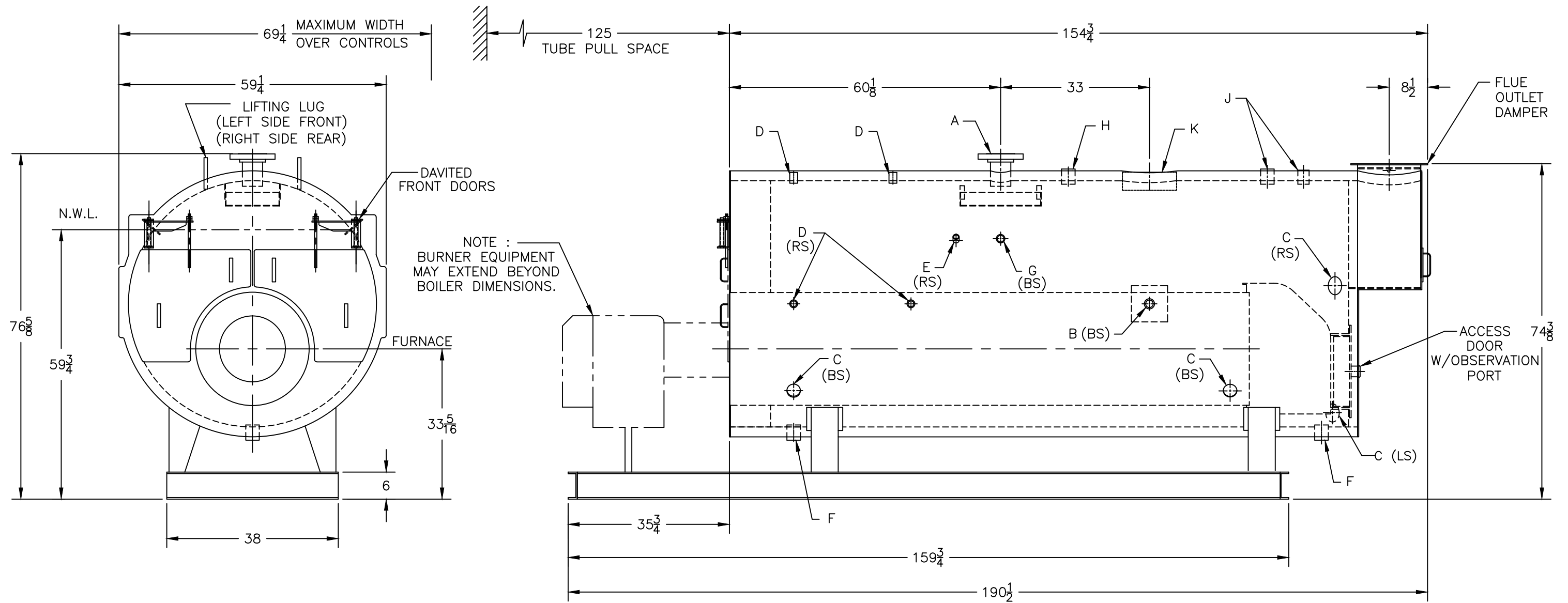
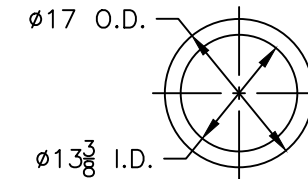


# BURNHAM®

Commercial Boilers

## LEGEND CONNECTIONS

- |                       |                            |                         |
|-----------------------|----------------------------|-------------------------|
| A = 4" FLANGED SUPPLY | E = 3/4" AQUASTAT          | J = 2" SAFETY VALVE (1) |
| B = 1-1/4" RETURN     | F = 2" BOTTOM BLOWDOWN     | 1-1/2" SAFETY VALVE (1) |
| C = 3" x 4" HANDHOLE  | G = 1-1/2" SURFACE BLOWOFF | K = 12" X 16" MANHOLE   |
| D = 1" WATER COLUMN   | H = 2" CHEMICAL FEED       |                         |



SPECIFICATIONS SUBJECT TO CHANGE WITHOUT NOTICE  
ALL CONNECTIONS ARE THREADED UNLESS OTHERWISE SPECIFIED

## RATINGS AND DATA

Shell Diameter : 54"  
Gross Output - BHP : 100  
Gross Output - MBH : 3348  
Gross Output - Lbs/Hr : 3450  
Safety Valve - Lbs/Hr. : 3906

Heating Surface - Square Feet  
Fireside - 358  
Firetubes  
Number - 46  
Diameter - 2-1/2"

Firing Rate  
1000 BTU Gas (MBH) - 4184  
140000 BTU/GAL (GPH) - 29.9  
150000 BTU/GAL (GPH) - 27.9

MODEL 3P-100XP  
100 BHP  
150 PSI STEAM