

LEGEND
 BS = BOTH SIDES
 RS = RIGHT SIDE
 LS = LEFT SIDE

BURNHAM®

Commercial Boilers

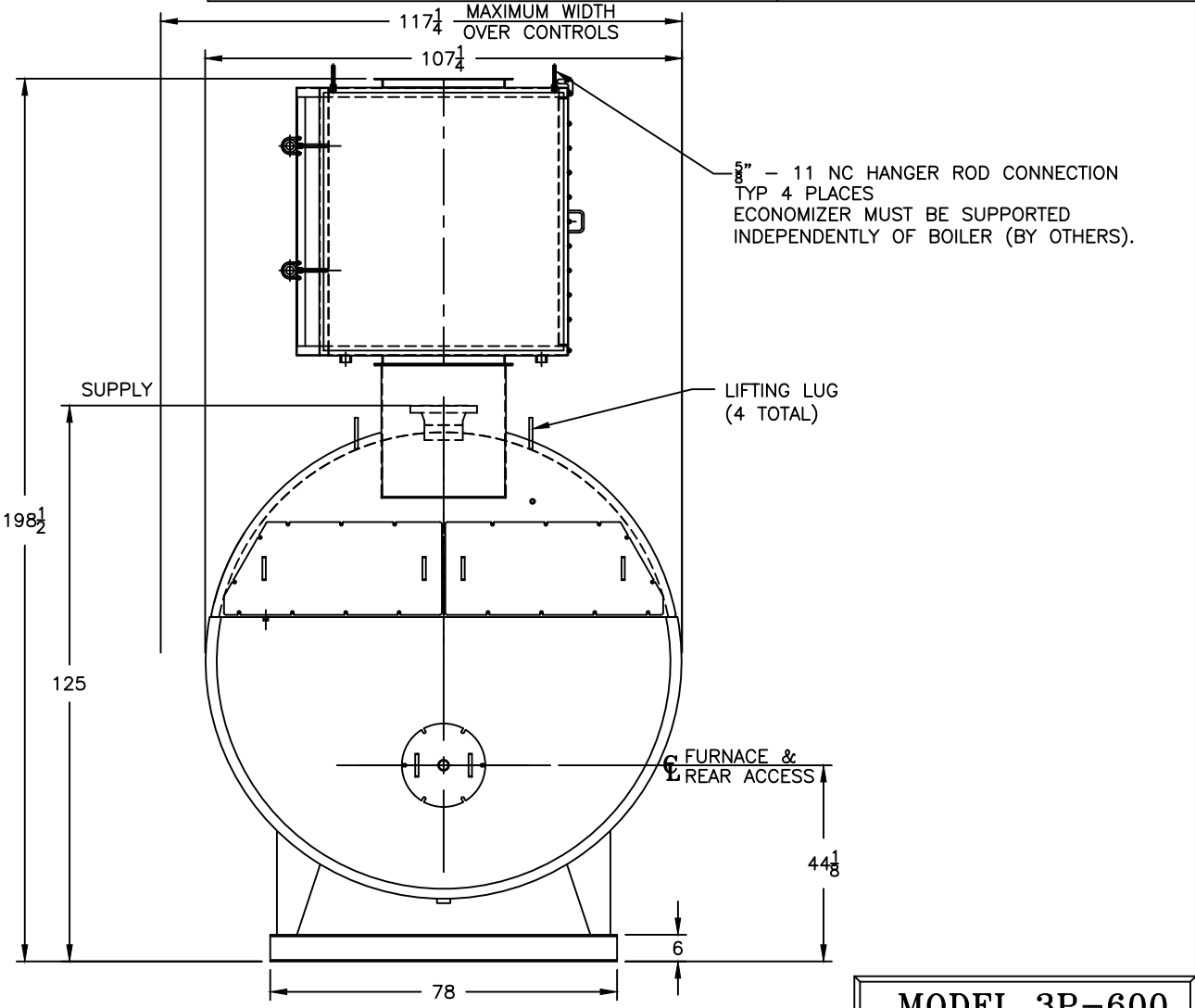
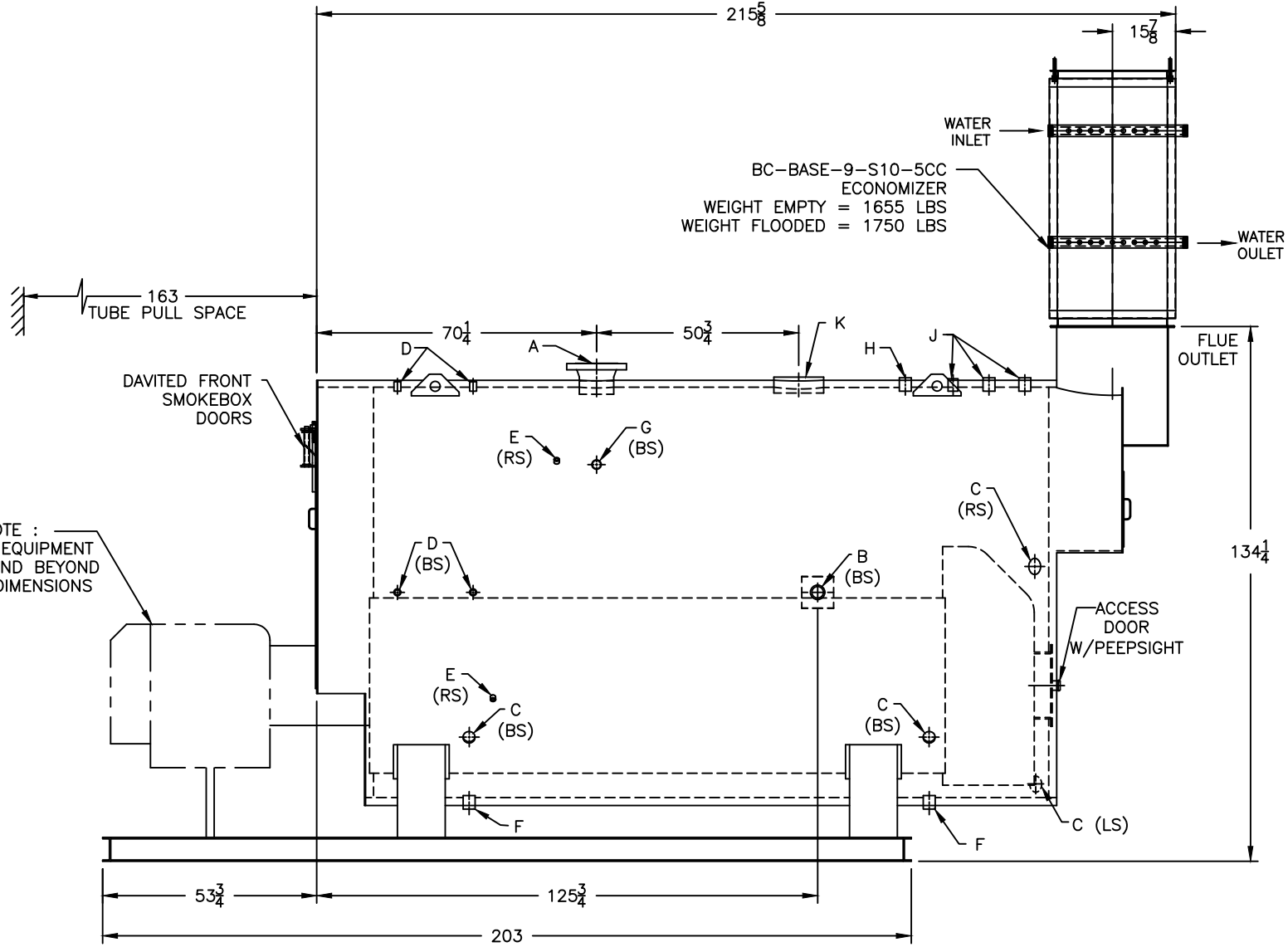
RATINGS AND DATA
 Shell Diameter : 102"
 Gross Output - BHP : 600
 Gross Output - MBH : 20085
 Gross Output - Lbs/Hr : 20700
 Net Rating - MBH : 15594
 Net Rating - Sq. Ft. : 64975
 Safety Valve - Lbs/Hr. : 24000

LEGEND CONNECTIONS
 A = 8" FLANGED SUPPLY (300#)
 B = 2-1/2" RETURN
 C = 3" x 4" HANDHOLE
 D = 1" WATER COLUMN
 E = 3/4" AQUASTAT
 F = 2" BOTTOM BLOWDOWN
 G = 2" SURFACE BLOWOFF
 H = 2" AUXILIARY CONNECTION
 J = 2" SAFETY VALVE (2)
 1-1/2" SAFETY VALVE (1)
 K = 12" x 16" MANHOLE
 L = 28" NOMINAL FLUE DIAMETER

Heating Surface - Sq. Ft.
 Fireside - 3000
 Firetubes
 Number - 362
 Diameter - 2.5" O.D.

Firing Rate
 1000 BTU Gas (MBH) - 25106
 140000 BTU/Gal Oil (GPH) - 172.6
 150000 BTU/Gal Oil (GPH) - 161.1

Water Content
 Pounds - 24142
 Gallons (U.S.) - 2899
 Approximate Weight/LBS.
 (Includes Economizer)
 Dry - 37077
 Wet - 61219



NOTE :
 BURNER EQUIPMENT
 MAY EXTEND BEYOND
 BOILER DIMENSIONS

1/2" - 11 NC HANGER ROD CONNECTION
 TYP 4 PLACES
 ECONOMIZER MUST BE SUPPORTED
 INDEPENDENTLY OF BOILER (BY OTHERS).

MODEL 3P-600
600 BHP
150 PSI STEAM