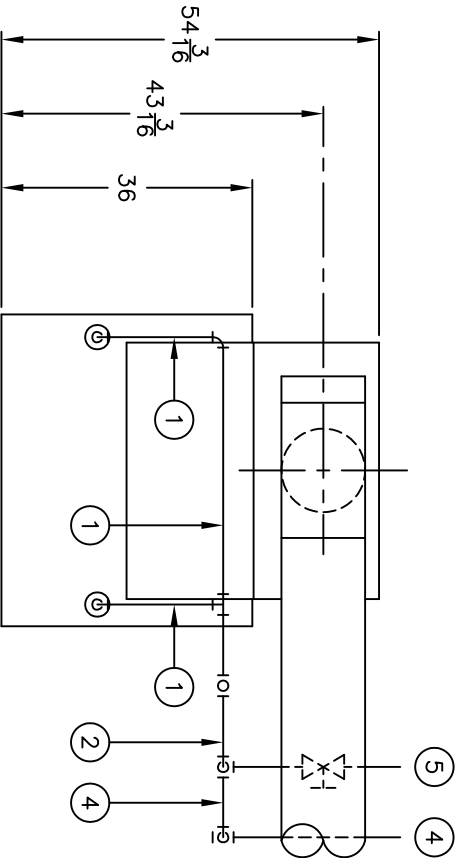
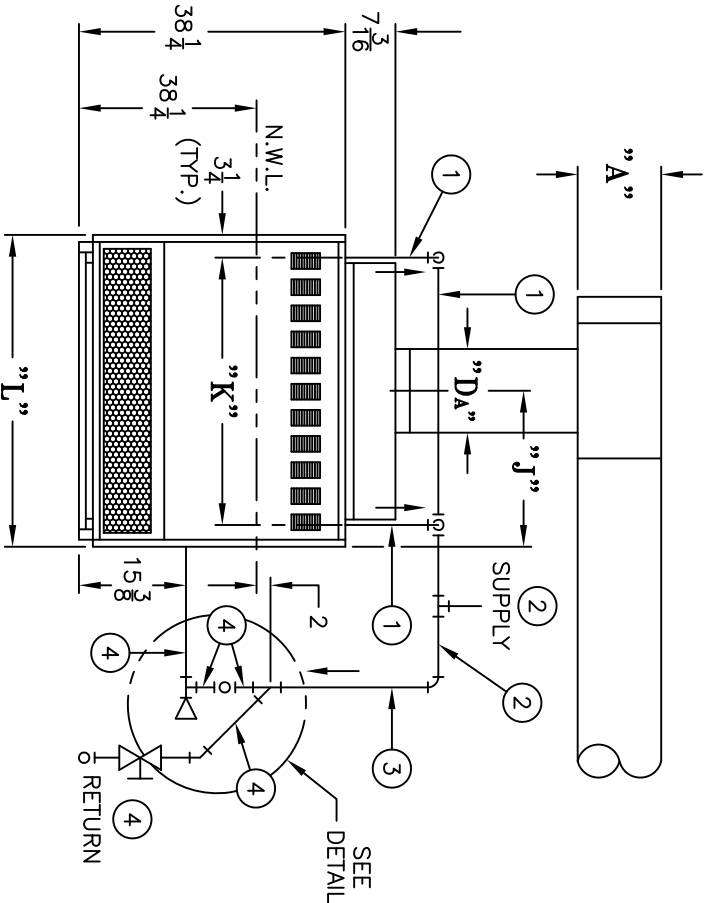


HARTFORD LOOP  
RETURN CONNECTION  
ALTERNATE PIPING DETAIL



PLAN VIEW

BOILER MODEL	"A"	"Da"	"j"	"K"	"L"	RISER					RETURN	MAKE-UP WATER
						1	2	3	4	5		
5006	9"	9"	17"	27 1/2"	34"	3"	3"	2"	1 1/2"	3/4"		
5007	10"	10"	19 3/4"	32 1/4"	39 3/8"	3"	3"	2"	1 1/2"	3/4"		
5008	12"	12"	22 3/8"	38 3/8"	44 3/4"	3"	3"	2"	1 1/2"	3/4"		
5009	12"	12"	25 1/8"	43 3/4"	50 1/4"	3"	3"	4"	1 1/2"	1"		
5010	12"	12"	27 7/8"	49 1/4"	55 3/4"	3"	4"	2 1/2"	2"	1"		



ELEVATION VIEW

- 1.) ALL PIPING IS SCHEDULE 40.
- 2.) PIPING AT REAR OF BOILER SHOULD NOT INTERFERE WITH REMOVAL OF UPPER REAR PANELS FOR ACCESS TO FLEUWAYS FOR CLEANING. THESE SCHEMATIC DRAWINGS ARE INTENDED SOLELY TO SHOW RECOMMENDED TAPPING LOCATIONS AND GENERAL PIPING ARRANGEMENTS. ACTUAL PIPING DETAILS SHOULD BE DESIGNED IN ACCORDANCE WITH STANDARD ENGINEERING PRACTICES.
- 3.) (1) SUPPLY CONNECTION AND (1) RETURN CONNECTION FOR SIZES 5006 THRU 5010.

<p>THIS DRAWING DEPICTS A GENERAL LAYOUT OF THE COMPONENTS (NOT NECESSARILY ALL INCLUSIVE) USED FOR A TYPICAL APPLICATION. THE PROPER SIZING, SELECTION, LOCATION AND INSTALLATION OF ALL COMPONENTS ARE THE RESPONSIBILITY OF THE DESIGNER OR INSTALLER.</p>				<p>PART NO.(S) DWG. DATE 10/05/00</p>	
<p><b>Burnham</b> HEATING DIVISION LANCASTER, PA. 17601-5376</p>		<p>DRAWING TITLE MINIMUM PIPING RECOMMENDATIONS SINGLE/STEAM 5006 THRU 5010</p>		<p>DRAWING NO. AE-SB-0163</p>	
DRAWN TOS.	CHECKED DWO	DESIGNED DWO	APPROVED DWO	RELEASED	DWG. SCALE
					REV. LEVEL