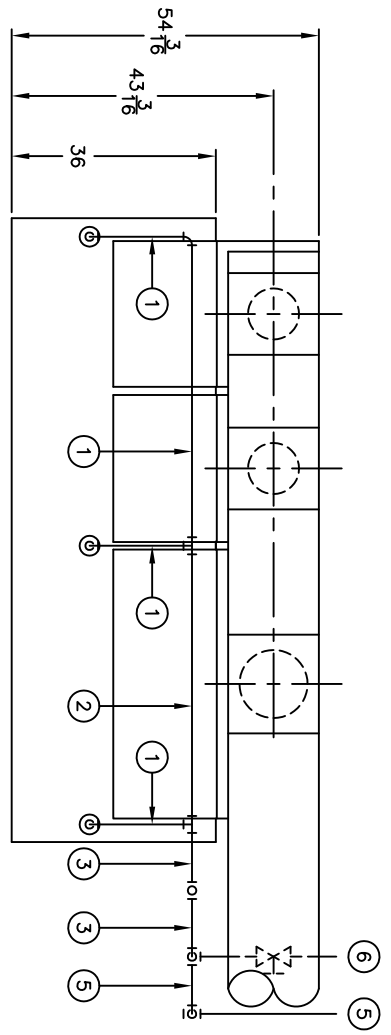
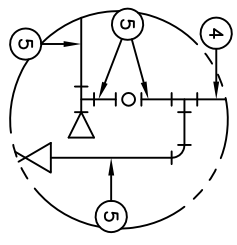
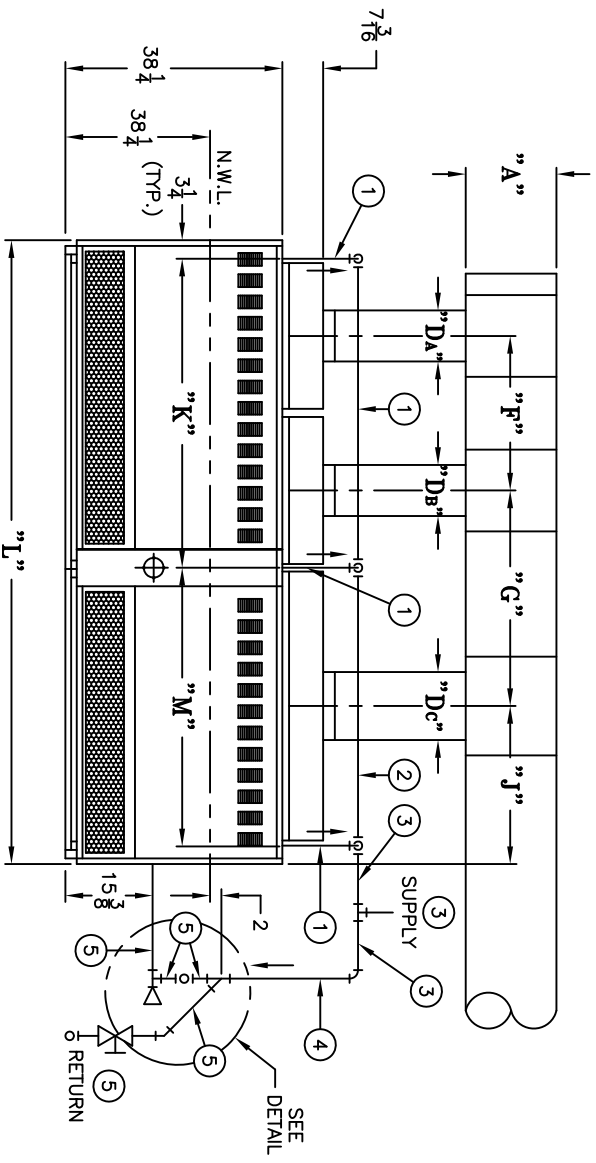


BOILER MODEL	"A"	"D _A "	"D _B "	"D _C "	"F"	"G"	"J"	"K"	"L"	"M"	RISER						MAKE-UP WATER
											(1)	(2)	(3)	(4)	(5)	(6)	
5020	16"	9"	9"	12"	27 1/4"	38"	27 7/8"	54 1/2"	110"	49 7/8"	3"	4"	5"	2 1/2"	2"	1 1/4"	

PLAN VIEW



ELEVATION VIEW



HARTFORD LOOP
RETURN CONNECTION
ALTERNATE PIPING DETAIL

- 1.) ALL PIPING IS SCHEDULE 40.
- 2.) PIPING AT REAR OF BOILER SHOULD NOT INTERFERE WITH REMOVAL OF UPPER REAR PANELS FOR ACCESS TO FLEUWAYS FOR CLEANING. THESE SCHEMATIC DRAWINGS ARE INTENDED SOLELY TO SHOW RECOMMENDED TAPPING LOCATIONS AND GENERAL PIPING ARRANGEMENTS. ACTUAL PIPING DETAILS SHOULD BE DESIGNED IN ACCORDANCE WITH STANDARD ENGINEERING PRACTICES.
- 3.) (3) SUPPLY CONNECTIONS AND (2) RETURN CONNECTIONS FOR SIZE 5020.

<p>THIS DRAWING DEPICTS A GENERAL LAYOUT OF THE COMPONENTS (NOT NECESSARILY ALL INCLUSIVE) USED FOR A TYPICAL APPLICATION. THE PROPER SIZING, SELECTION, LOCATION AND INSTALLATION OF ALL COMPONENTS ARE THE RESPONSIBILITY OF THE DESIGNER OR INSTALLER.</p>					<p>PART NO.(S)</p>	
<p>Burnham HYDRAONICS DIVISION LANCASTER, PA. 17601-3578</p>					<p>DWG. DATE 10/05/00</p>	
<p>DRAWN TOS.</p>	<p>CHECKED DWO</p>	<p>DESIGNED DWO</p>	<p>APPROVED DWO</p>	<p>RELEASED</p>	<p>DWG. SCALE</p>	<p>DRAWING NO. AE-5B-0166</p>
<p>MINIMUM PIPING RECOMMENDATIONS SINGLE/STEAM 5020</p>					<p>DRAWING NO. AE-5B-0166</p>	
<p>REV. LEVEL</p>					<p>REV. LEVEL</p>	