

BURNHAM®

Commercial Boilers

RATINGS AND DATA

Shell Diameter : 45 $\frac{1}{4}$ "
 Gross Output - BHP : 207.3
 Gross Output - MBH : 6940
 Net Rating - MBH : 6035
 Safety Valve - MBH : 6940

LEGEND CONNECTIONS

- A = 6" 150# FLANGED SUPPLY
- B = 6" 150# FLANGED RETURN
- C = 2" WASHOUT
- D = 1" WATER COLUMN
- E = 3/4" AQUASTAT
- F = 2" DRAIN
- G = 3 X 4 HANDHOLE
- H = 2" AUXILIARY CONNECTION
- J = 2" SAFETY/RELIEF VALVE (1)
- 1-1/2" SAFETY/RELIEF VALVE (1)
- K = 3/4" TEMPERATURE GAUGE
- M = 16" NOMINAL FLUE DIAMETER

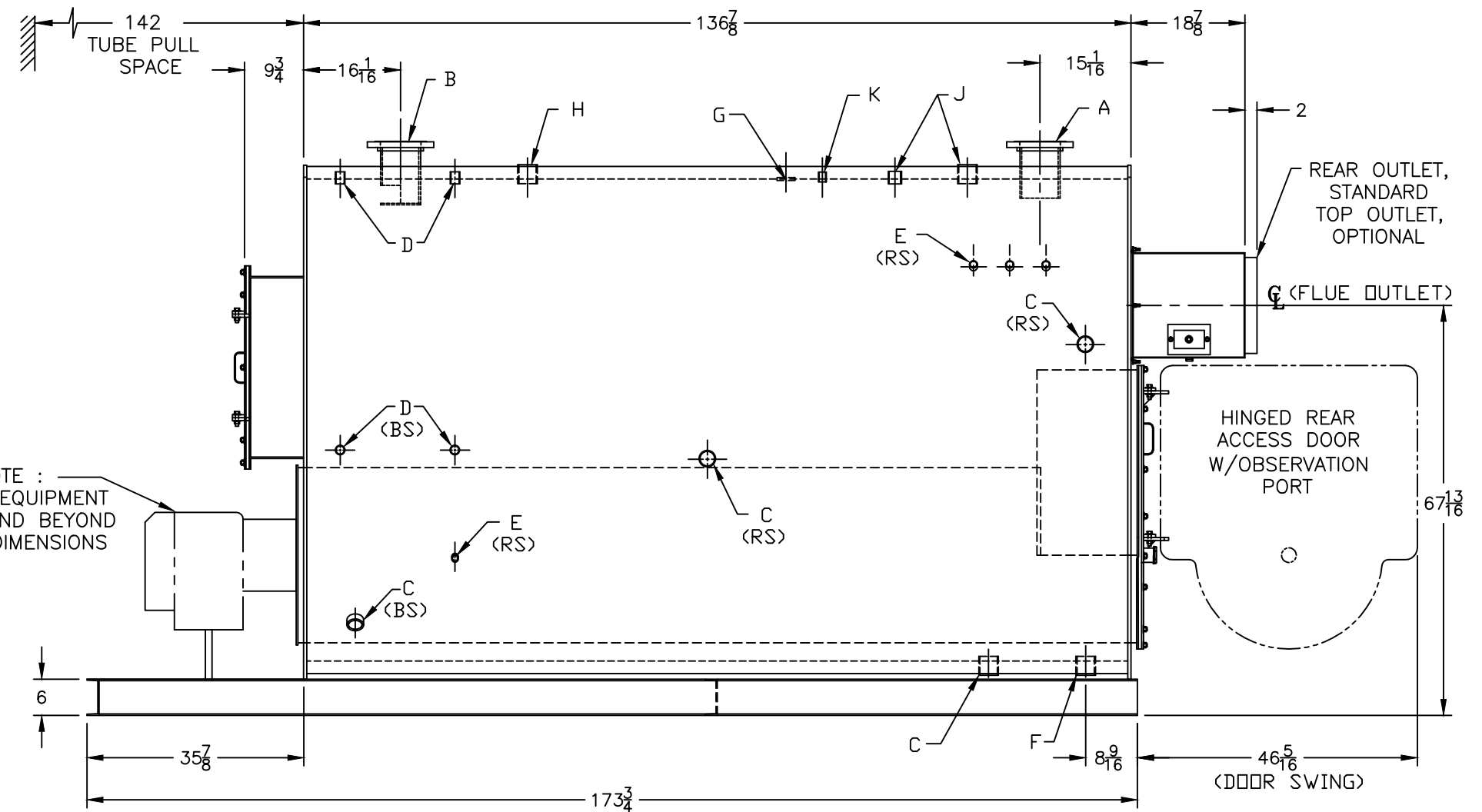
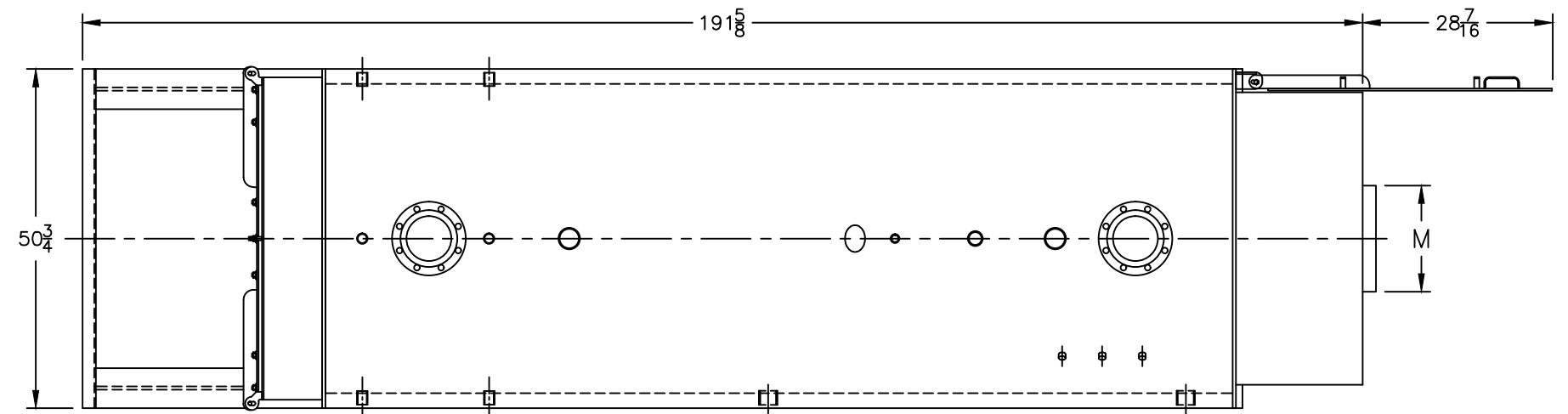
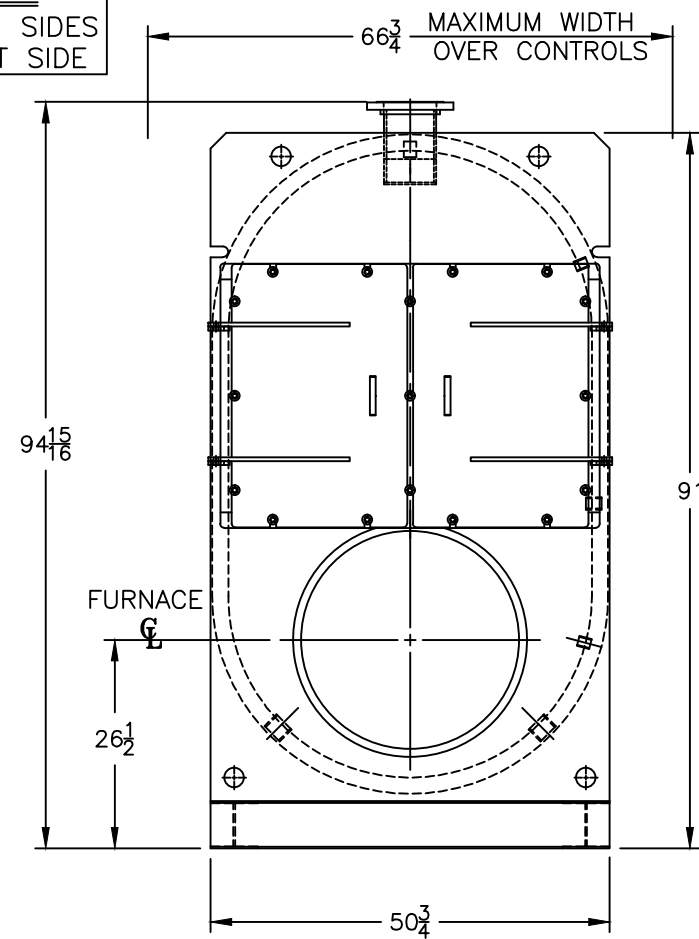
Heating Surface - Sq. Ft.
 Fireside - 742
 Firetubes
 Number - 139
 Diameter - 2" O.D.

Firing Rate
 1000 BTU Gas (MBH) - 8165
 140000 BTU/Gal Oil (GPH) - 56.1

Water Content
 Pounds - 9630
 Gallons (U.S.) - 1156
 Approximate Weight/LBS.
 Dry - 14715
 Wet - 24345

LEGEND

BS = BOTH SIDES
 RS = RIGHT SIDE



MODEL CPW-200A
207.3 BHP
60 PSI WATER

SPECIFICATIONS SUBJECT TO CHANGE WITHOUT NOTICE ALL CONNECTIONS ARE THREADED UNLESS OTHERWISE SPECIFIED
 THIS DOCUMENT CONTAINS CONFIDENTIAL INFORMATION WHICH IS THE PROPERTY OF BURNHAM COMMERCIAL. THIS DOCUMENT MAY NOT BE REPRODUCED, TRANSFERRED OR USED, OR ITS CONTENTS DISCLOSED, WITHOUT THE WRITTEN PERMISSION OF THE OWNER.