

BURNHAM®

Commercial Boilers

RATINGS AND DATA

Shell Diameter : 45 $\frac{1}{4}$ "
 Gross Output - BHP : 180.7
 Gross Output - MBH : 6050
 Net Rating - MBH : 5261
 Safety Valve - MBH : 6163

Heating Surface - Sq. Ft.
 Fireside - 641
 Firetubes
 Number - 126
 Diameter - 2" O.D.

Firing Rate
 1000 BTU Gas (MBH) - 7144
 140000 BTU/Gal Oil (GPH) - 49.1

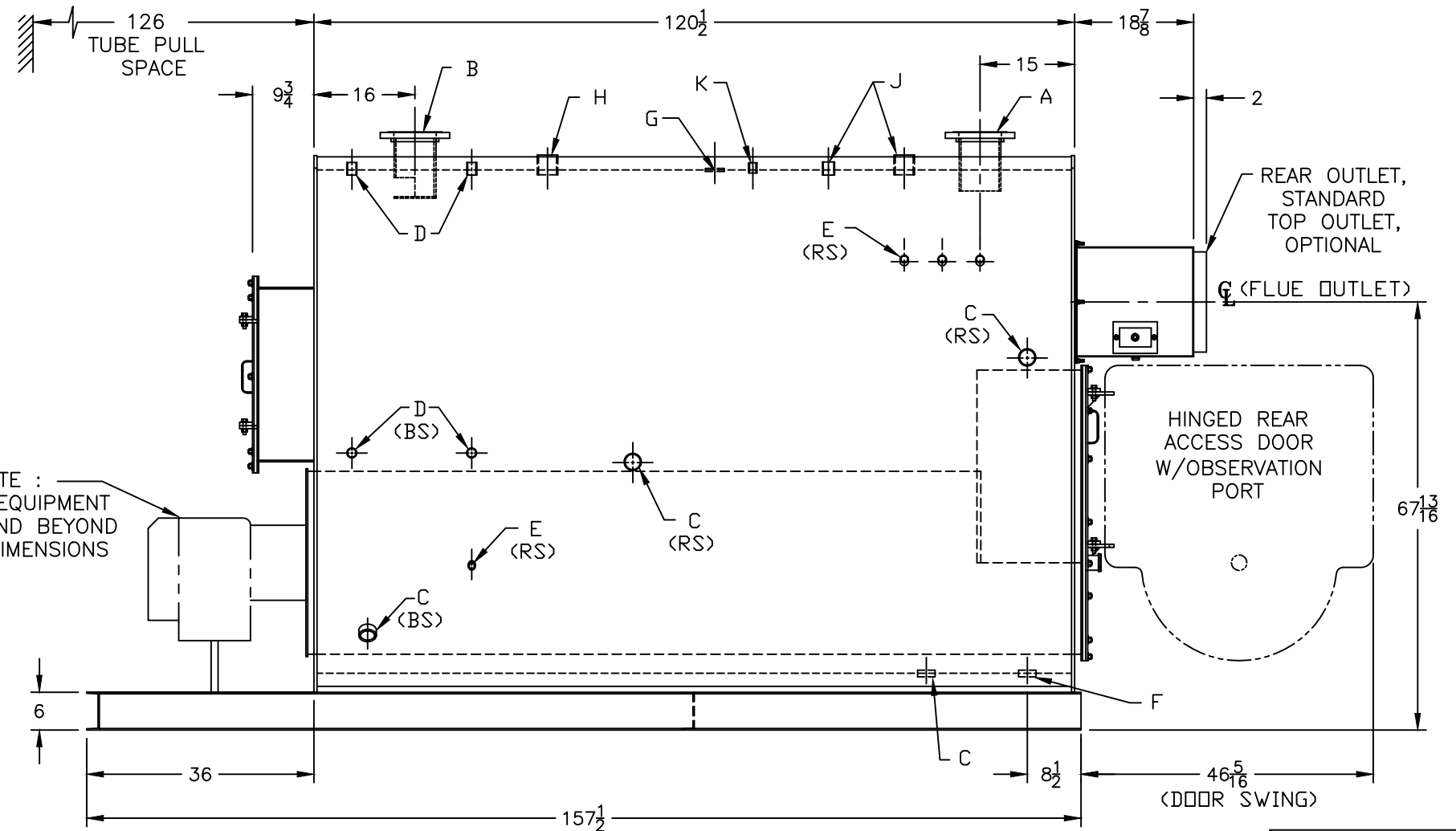
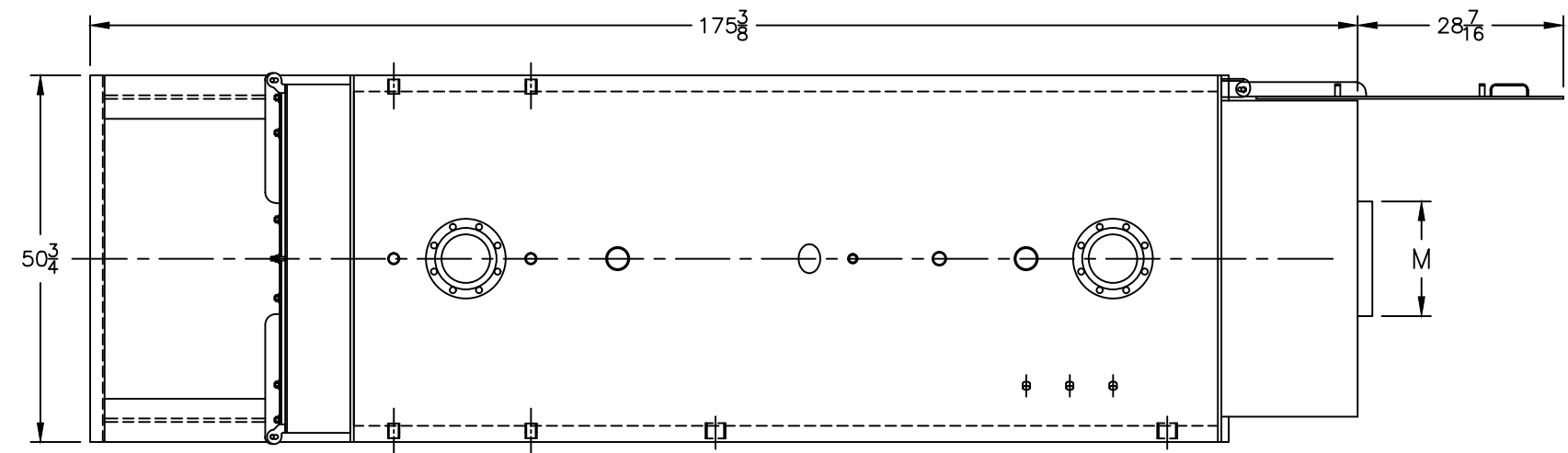
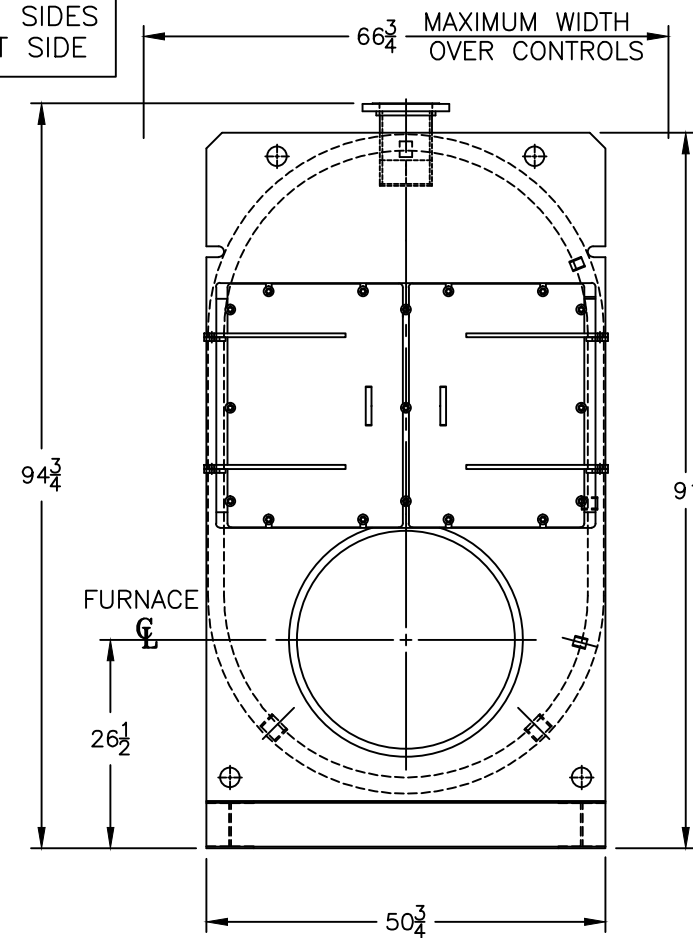
Water Content
 Pounds - 8455
 Gallons (U.S.) - 1015
 Approximate Weight/LBS.
 Dry - 11413
 Wet - 19868

LEGEND CONNECTIONS

- A = 6" 150# FLANGED SUPPLY
- B = 6" 150# FLANGED RETURN
- C = 2" WASHOUT
- D = 1" WATER COLUMN
- E = 3/4" AQUASTAT
- F = 2" DRAIN
- G = 3 X 4 HANDHOLE
- H = 2" AUXILIARY CONNECTION
- J = 2" SAFETY/RELIEF VALVE (1)
- 1-1/4" SAFETY/RELIEF VALVE (1)
- K = 3/4" TEMPERATURE GAUGE
- M = 16" NOMINAL FLUE DIAMETER

LEGEND

- BS = BOTH SIDES
- RS = RIGHT SIDE



MODEL CW-175A
180.7 BHP
30 PSI WATER

SPECIFICATIONS SUBJECT TO CHANGE WITHOUT NOTICE ALL CONNECTIONS ARE THREADED UNLESS OTHERWISE SPECIFIED
 THIS DOCUMENT CONTAINS CONFIDENTIAL INFORMATION WHICH IS THE PROPERTY OF BURNHAM COMMERCIAL. THIS DOCUMENT MAY NOT BE REPRODUCED, TRANSFERRED OR USED, OR ITS CONTENTS DISCLOSED, WITHOUT THE WRITTEN PERMISSION OF THE OWNER.