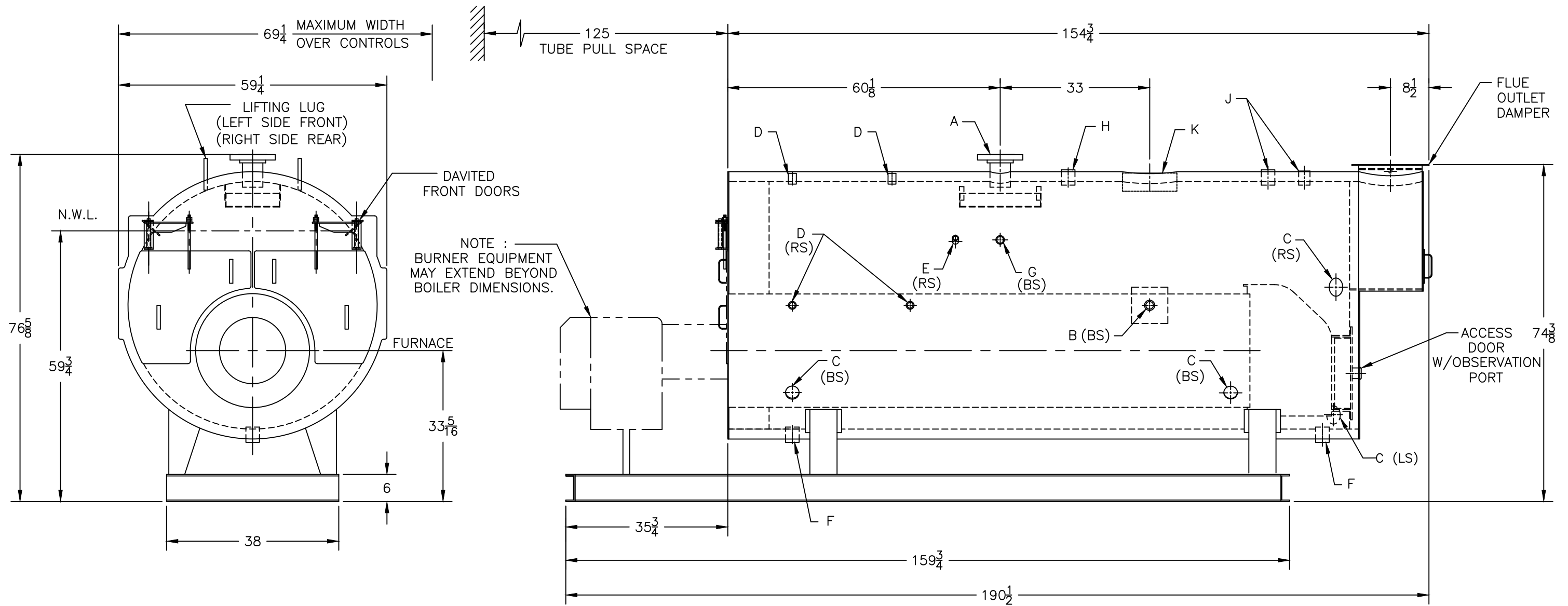
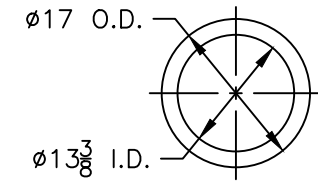


BURNHAM[®]
Commercial Boilers

LEGEND CONNECTIONS

- | | | |
|-----------------------|----------------------------|-------------------------|
| A = 4" FLANGED SUPPLY | E = 3/4" AQUASTAT | J = 2" SAFETY VALVE (1) |
| B = 1-1/4" RETURN | F = 2" BOTTOM BLOWDOWN | 1-1/2" SAFETY VALVE (1) |
| C = 3" x 4" HANDHOLE | G = 1-1/2" SURFACE BLOWOFF | K = 12" X 16" MANHOLE |
| D = 1" WATER COLUMN | H = 2" CHEMICAL FEED | |



SPECIFICATIONS SUBJECT TO CHANGE WITHOUT NOTICE
ALL CONNECTIONS ARE THREADED UNLESS OTHERWISE SPECIFIED

RATINGS AND DATA

Shell Diameter : 54"
Gross Output - BHP : 150
Gross Output - MBH : 5021
Gross Output - Lbs/Hr : 5175
Safety Valve - Lbs/Hr. : 5858

Heating Surface - Square Feet
Fireside - 358
Firetubes
Number - 46
Diameter - 2-1/2"

Firing Rate
1000 BTU Gas (MBH) - 6277
140000 BTU/GAL (GPH) - 44.8
150000 BTU/GAL (GPH) - 41.8

MODEL 3P-150XP
150 BHP
150 PSI STEAM