

# BURNHAM®

## Commercial Boilers

### LEGEND CONNECTIONS

- A = 20" FLANGED SUPPLY (150#)
- B = 4" RETURN
- C = 3" x 4" HANDHOLE
- D = 1" WATER COLUMN
- E = 3/4" AQUASTAT
- F = 2" BOTTOM BLOWDOWN
- G = 2" SURFACE BLOWOFF
- H = 2" AUXILIARY CONNECTION
- J = 3" SAFETY VALVE (5)  
2" SAFETY VALVE (1)
- K = 12" x 16" MANHOLE
- L = 36" NOMINAL FLUE DIAMETER

### RATINGS AND DATA

Shell Diameter : 114"  
 Gross Output - BHP : 900  
 Gross Output - MBH : 30128  
 Gross Output - Lbs/Hr : 31050  
 Net Rating - MBH : 23391  
 Net Rating - Sq. Ft. : 97462  
 Safety Valve - Lbs/Hr. : 36000

---

Heating Surface - Sq. Ft.  
 Fireside - 4500  
 Firetubes  
 Number - 410  
 Diameter - 2.5" O.D.

---

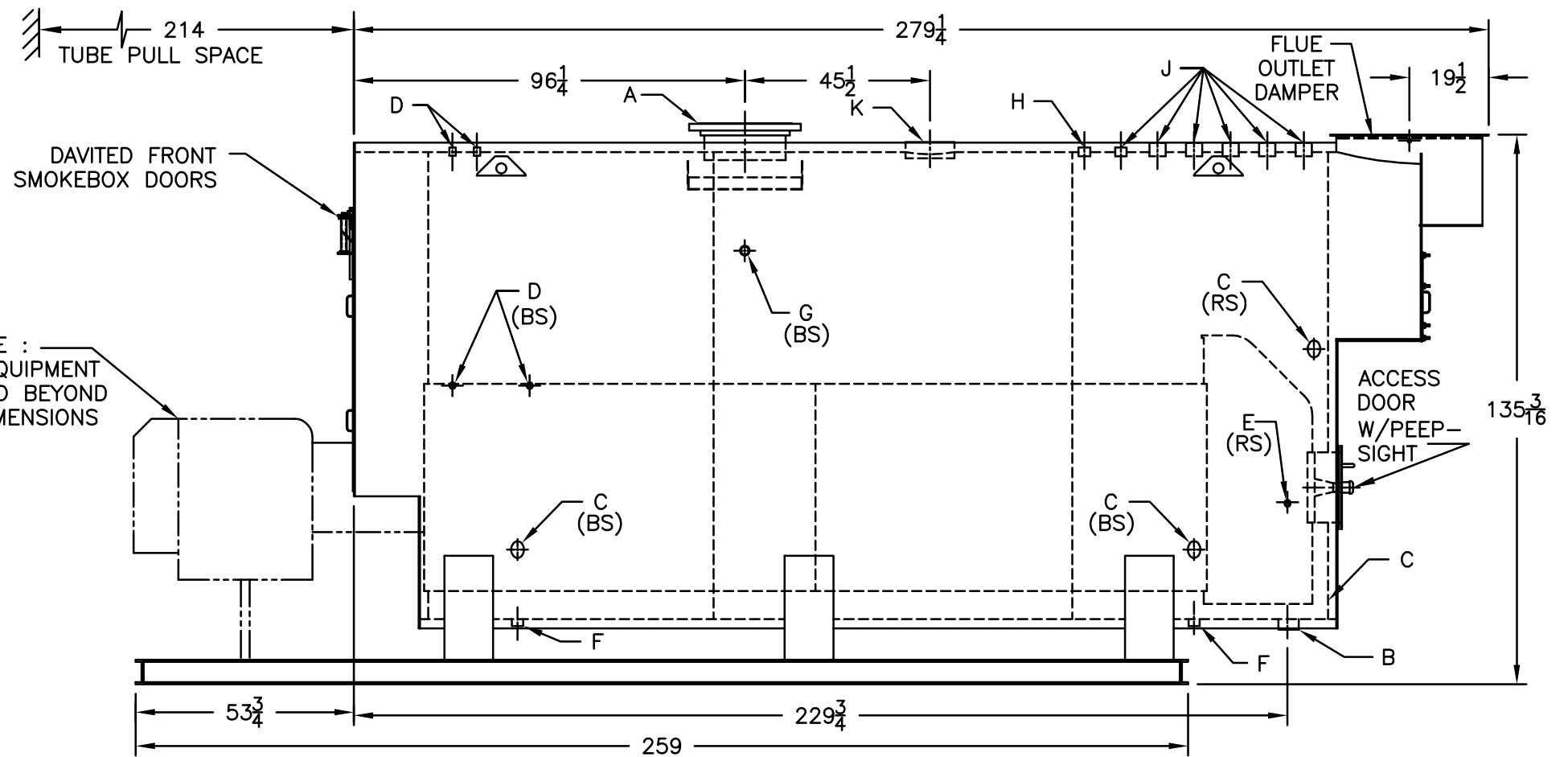
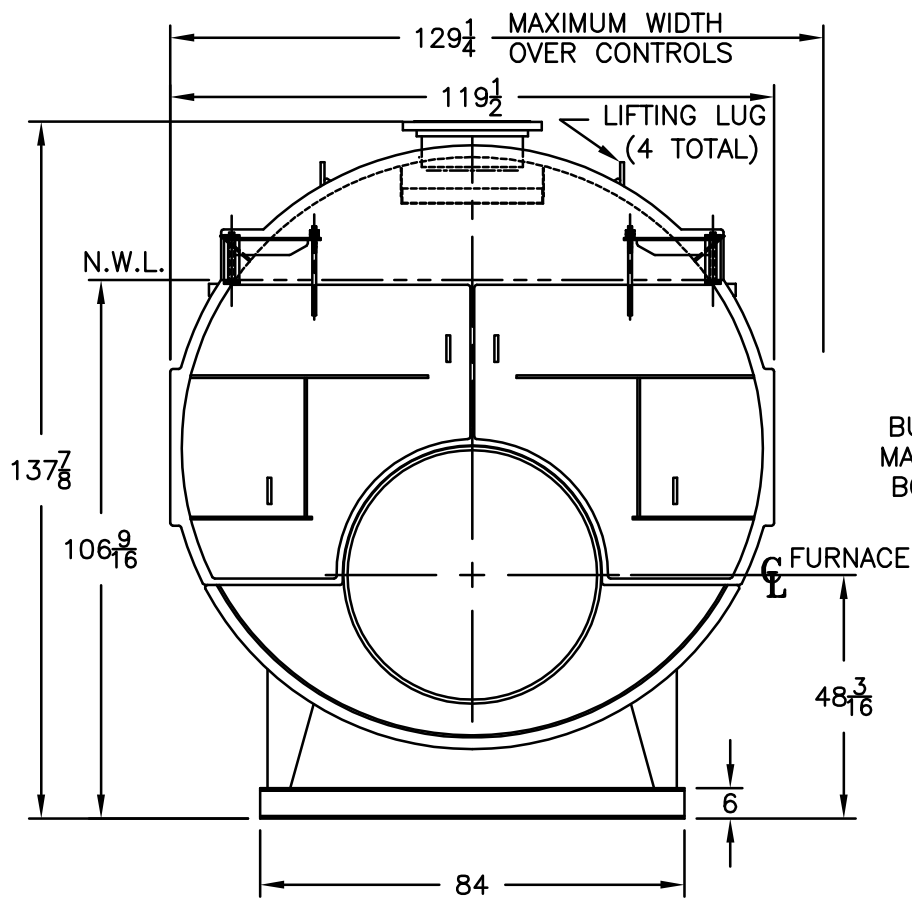
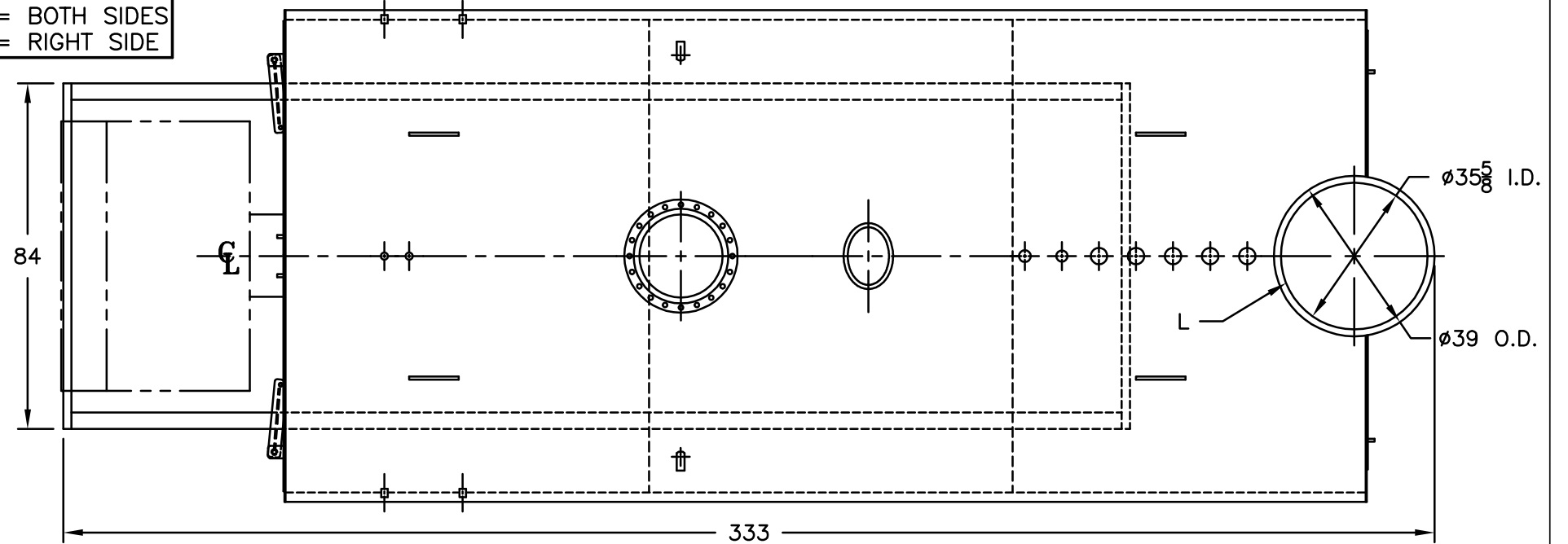
Firing Rate  
 1000 BTU Gas (MBH) - 37659  
 140000 BTU/Gal Oil (GPH) - 269.0  
 150000 BTU/Gal Oil (GPH) - 251.1

---

Water Content  
 Pounds - 35100  
 Gallons (U.S.) - 4208  
 Approximate Weight/LBS.  
 Dry - 47800  
 Wet - 82900

### LEGEND

BS = BOTH SIDES  
 RS = RIGHT SIDE



NOTE :  
 BURNER EQUIPMENT  
 MAY EXTEND BEYOND  
 BOILER DIMENSIONS

**MODEL 3L-900**  
**900 BHP**  
**15 PSI STEAM**

SPECIFICATIONS SUBJECT TO CHANGE WITHOUT NOTICE ALL CONNECTIONS ARE THREADED UNLESS OTHERWISE SPECIFIED  
 THIS DOCUMENT CONTAINS CONFIDENTIAL INFORMATION WHICH IS THE PROPERTY OF BURNHAM COMMERCIAL. THIS DOCUMENT MAY NOT BE REPRODUCED, TRANSFERRED OR USED, OR ITS CONTENTS DISCLOSED, WITHOUT THE WRITTEN PERMISSION OF THE OWNER.