

# BURNHAM®

## Commercial Boilers

### RATINGS AND DATA

Shell Diameter : 78"  
 Gross Output - BHP : 250  
 Gross Output - MBH : 8369  
 Gross Output - Lbs/Hr : 8625  
 Net Rating - MBH : 6498  
 Net Rating - Sq. Ft. : 27075  
 Safety Valve - Lbs/Hr. : 9763

Heating Surface - Sq. Ft.  
 Fireside - 1250  
 Firetubes  
 Number - 186  
 Diameter - 2.5" O.D.

Firing Rate  
 1000 BTU Gas (MBH) - 10461  
 140000 BTU/Gal Oil (GPH) - 71.7  
 150000 BTU/Gal Oil (GPH) - 66.9

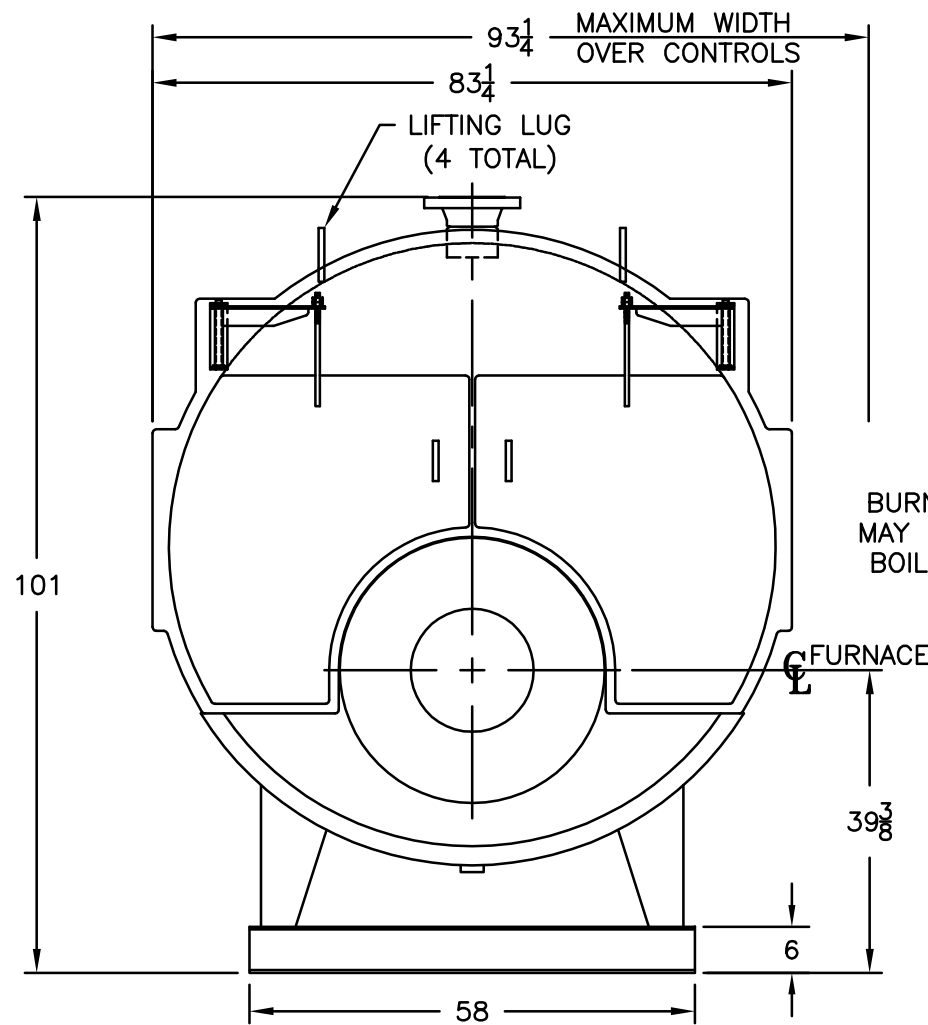
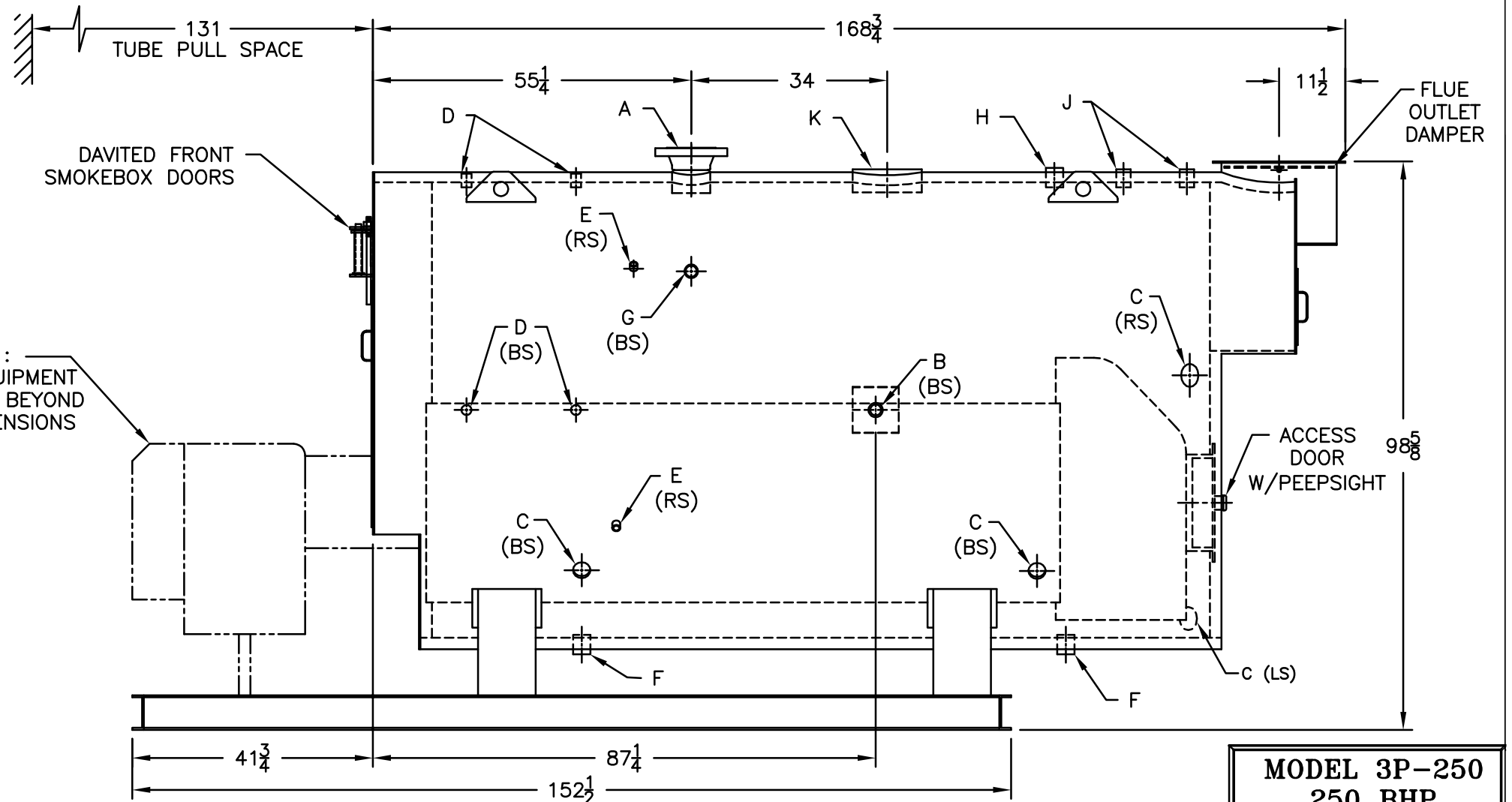
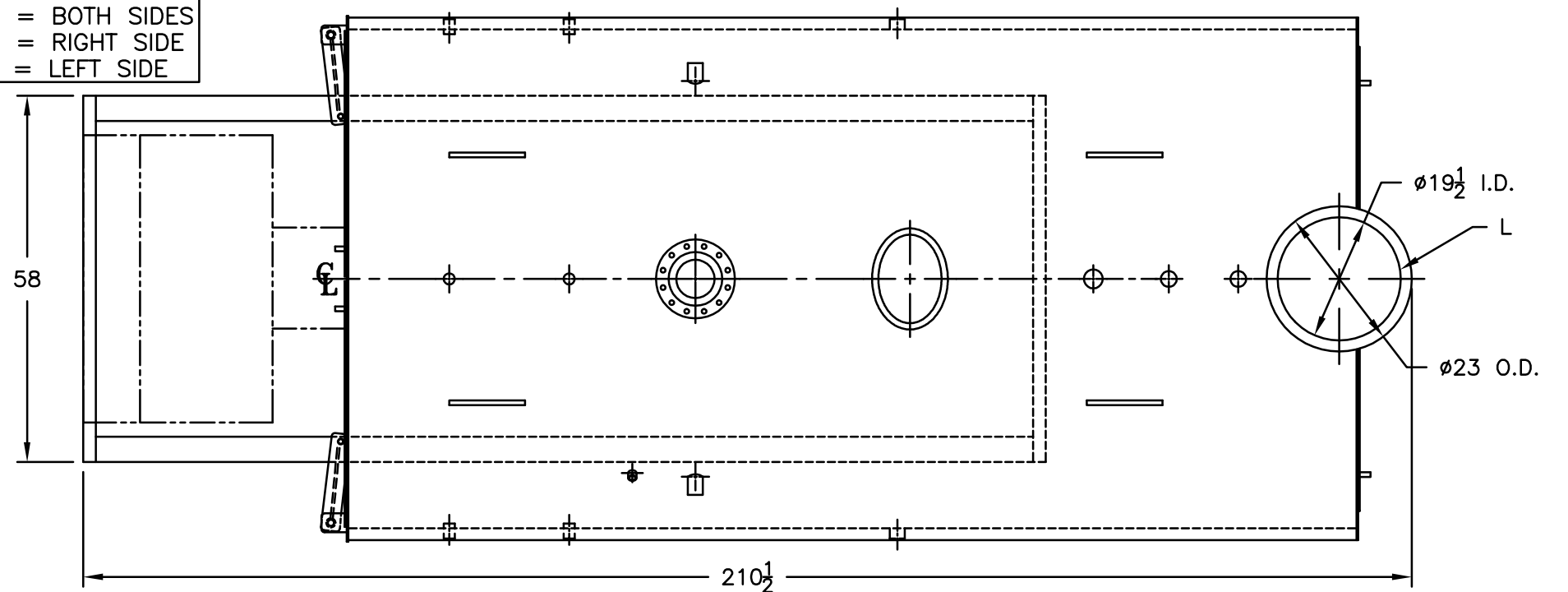
Water Content  
 Pounds - 11128  
 Gallons (U.S.) - 1336  
 Approximate Weight/LBS.  
 Dry - 18600  
 Wet - 29728

### LEGEND CONNECTIONS

- A = 6" FLANGED SUPPLY (300#)
- B = 2" RETURN
- C = 3" x 4" HANDHOLE
- D = 1" WATER COLUMN
- E = 3/4" AQUASTAT
- F = 2" BOTTOM BLOWDOWN
- G = 2" SURFACE BLOWOFF
- H = 2" AUXILIARY CONNECTION
- J = 1-1/2" SAFETY VALVE (2)
- K = 12" x 16" MANHOLE
- L = 20" NOMINAL FLUE DIAMETER

### LEGEND

- BS = BOTH SIDES
- RS = RIGHT SIDE
- LS = LEFT SIDE



SPECIFICATIONS SUBJECT TO CHANGE WITHOUT NOTICE ALL CONNECTIONS ARE THREADED UNLESS OTHERWISE SPECIFIED  
 THIS DOCUMENT CONTAINS CONFIDENTIAL INFORMATION WHICH IS THE PROPERTY OF BURNHAM COMMERCIAL. THIS DOCUMENT MAY NOT BE REPRODUCED, TRANSFERRED OR USED, OR ITS CONTENTS DISCLOSED, WITHOUT THE WRITTEN PERMISSION OF THE OWNER.

**MODEL 3P-250**  
**250 BHP**  
**150 PSI STEAM**