

# BURNHAM®

## Commercial Boilers

### LEGEND CONNECTIONS

- A = 8" FLANGED SUPPLY (150#)
- B = 8" FLANGED RETURN (150#)
- C = 3" x 4" HANDHOLE
- D = 1" WATER COLUMN
- E = 3/4" AQUASTAT
- F = 2" BOTTOM DRAIN
- G = 2" EXPANSION TANK
- H = 3/4" TEMPERATURE GAUGE
- J = 1-1/4" RELIEF VALVE (1)  
2" RELIEF VALVE (2)
- K = 12" x 16" MANHOLE
- L = 24" NOMINAL FLUE DIAMETER

### RATINGS AND DATA

Shell Diameter : 90"  
 Gross Output - BHP : 363.1  
 Gross Output - MBH : 12155  
 Net Rating - MBH : 10570  
 Relief Valve - MBH : 14000

---

Heating Surface - Sq. Ft.  
 Fireside - 1750

---

Firetubes  
 Number - 268  
 Diameter - 2.5" O.D.

---

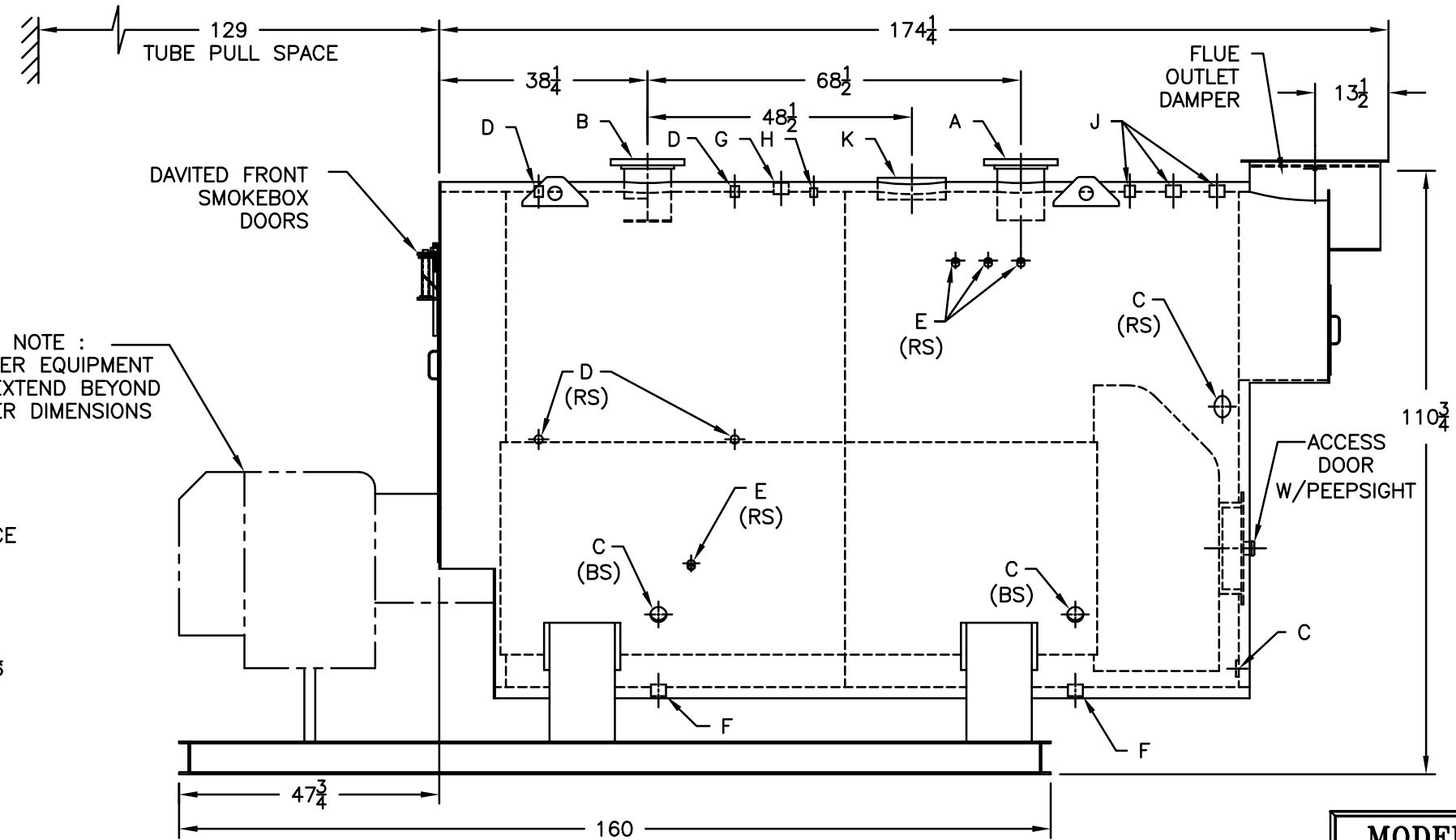
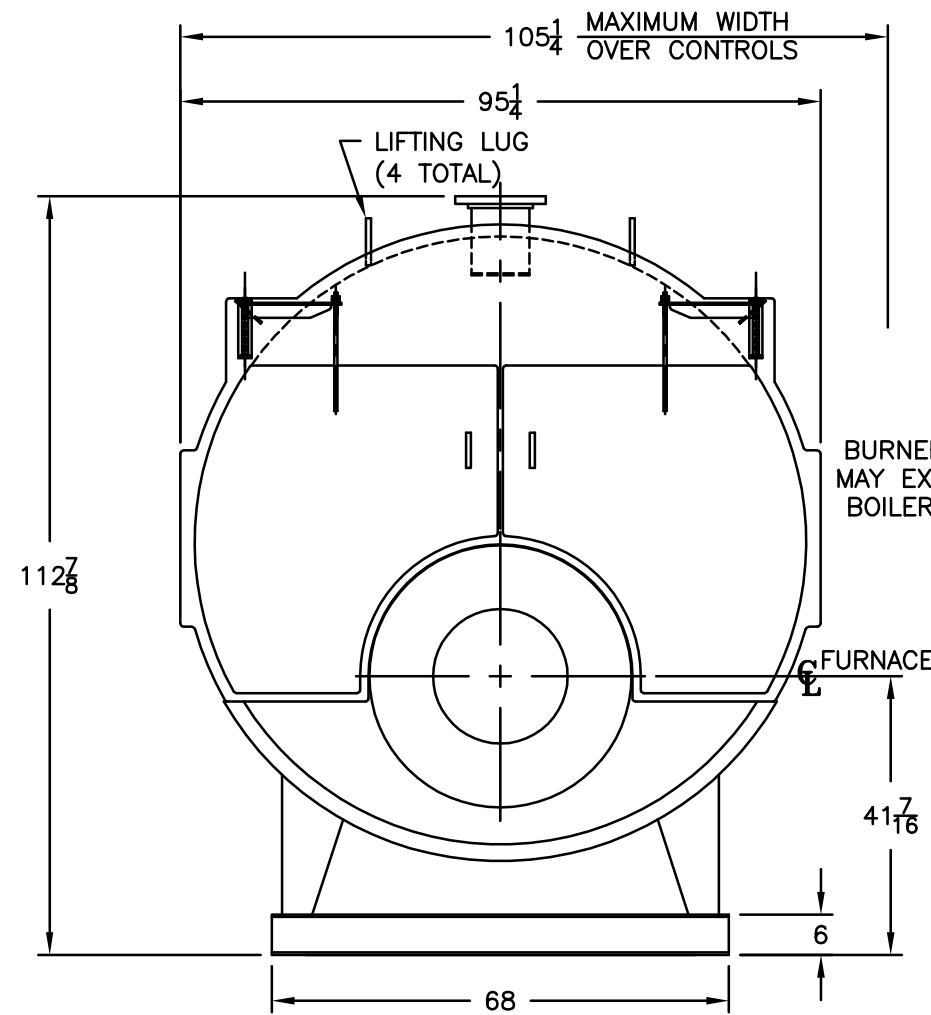
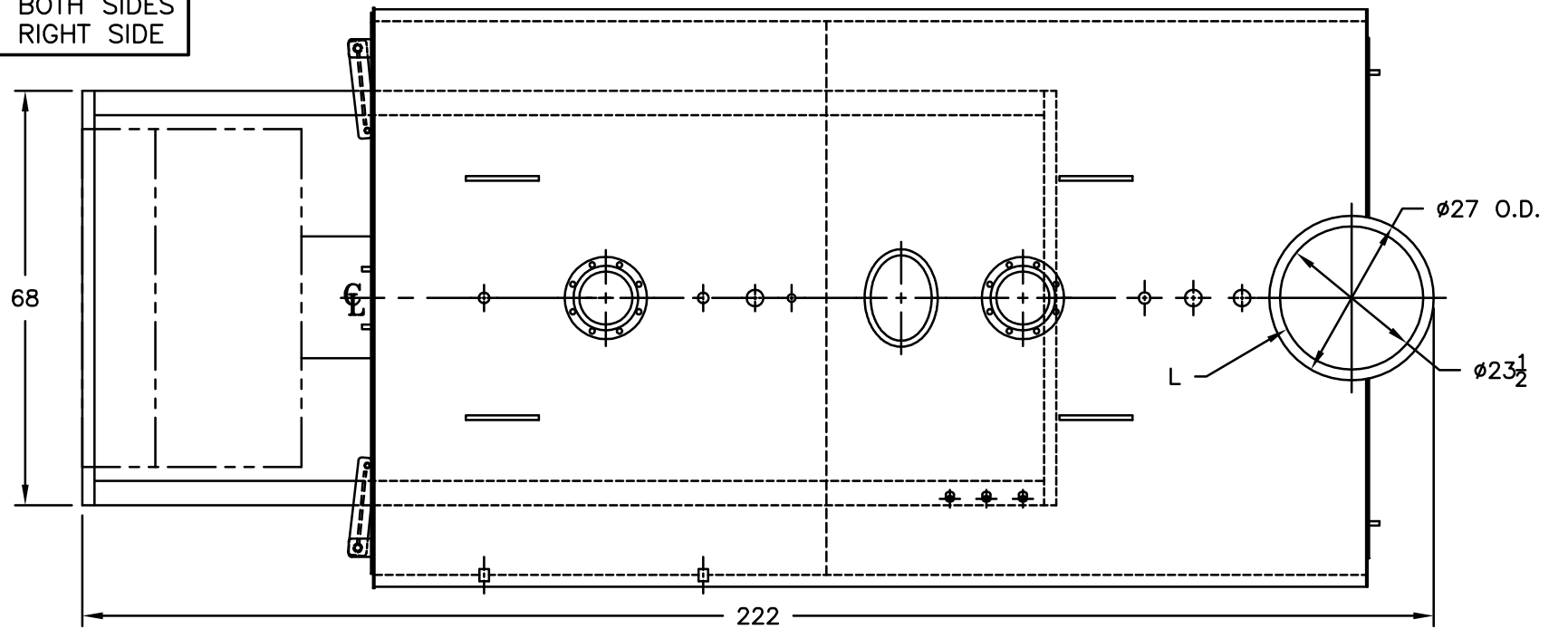
Firing Rate  
 1000 BTU Gas (MBH) - 14645  
 140000 BTU/Gal Oil (GPH) - 100.1  
 150000 BTU/Gal Oil (GPH) - 93.4

---

Water Content  
 Pounds - 17620  
 Gallons (U.S.) - 2115  
 Approximate Weight/LBS.  
 Dry - 21000  
 Wet - 38620

### LEGEND

BS = BOTH SIDES  
 RS = RIGHT SIDE



**MODEL 3W-350**  
**363.1 BHP**  
**30 PSI WATER**

SPECIFICATIONS SUBJECT TO CHANGE WITHOUT NOTICE. ALL CONNECTIONS ARE THREADED UNLESS OTHERWISE SPECIFIED. THIS DOCUMENT CONTAINS CONFIDENTIAL INFORMATION WHICH IS THE PROPERTY OF BURNHAM COMMERCIAL. THIS DOCUMENT MAY NOT BE REPRODUCED, TRANSFERRED OR USED, OR ITS CONTENTS DISCLOSED, WITHOUT THE WRITTEN PERMISSION OF THE OWNER.