

BURNHAM®

Commercial Boilers

RATINGS AND DATA

Shell Diameter : 80"
 Gross Output - BHP : 319.5
 Gross Output - MBH : 10695
 Gross Output - Lbs/Hr : 11023
 Net Rating - MBH : 8304
 Net Rating - Sq. Ft. : 34599
 Safety Valve - Lbs/Hr. : 12000

Heating Surface - Sq. Ft.
 Fireside - 1500
 Firetubes
 Number - 164
 Diameter - 2.5" O.D.

Firing Rate
 1000 BTU Gas (MBH) - 12553
 140000 BTU/Gal Oil (GPH) - 86.9
 150000 BTU/Gal Oil (GPH) - 81.1

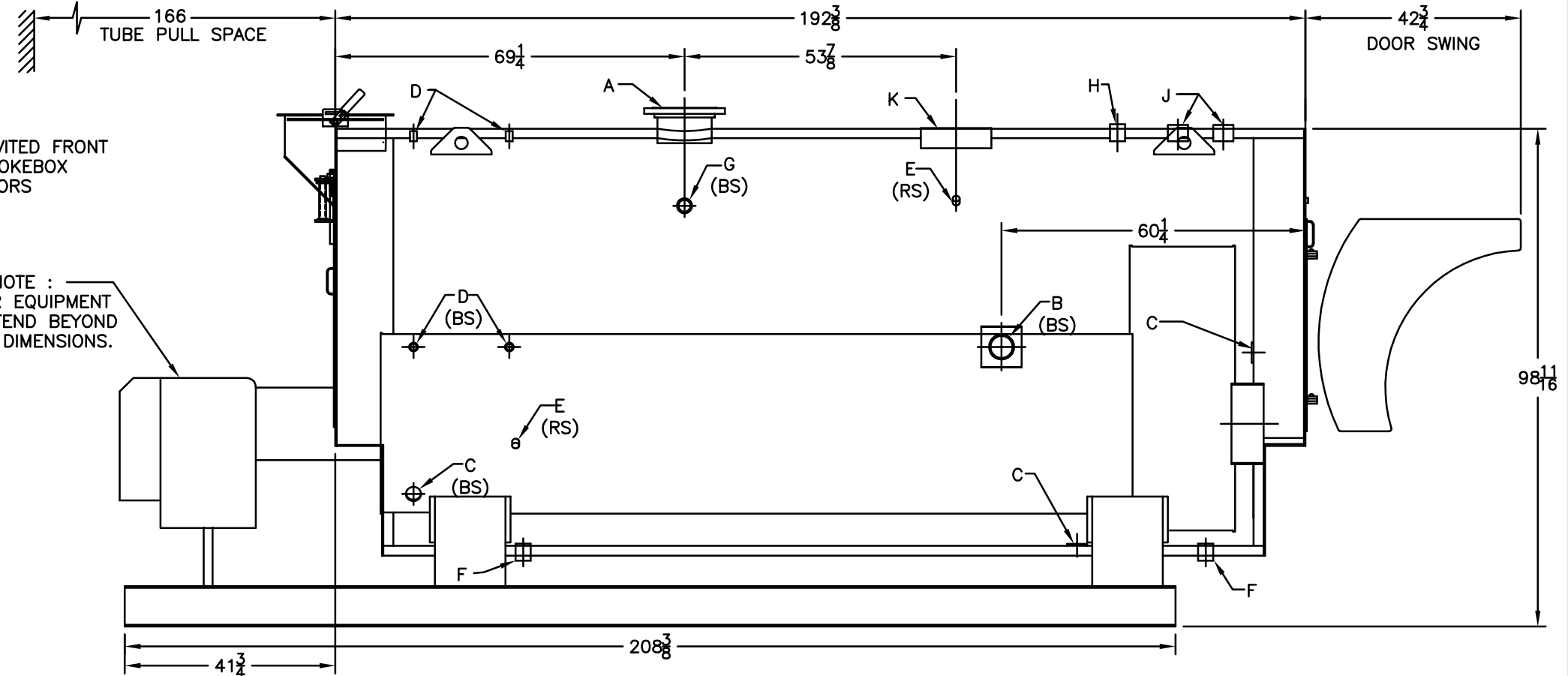
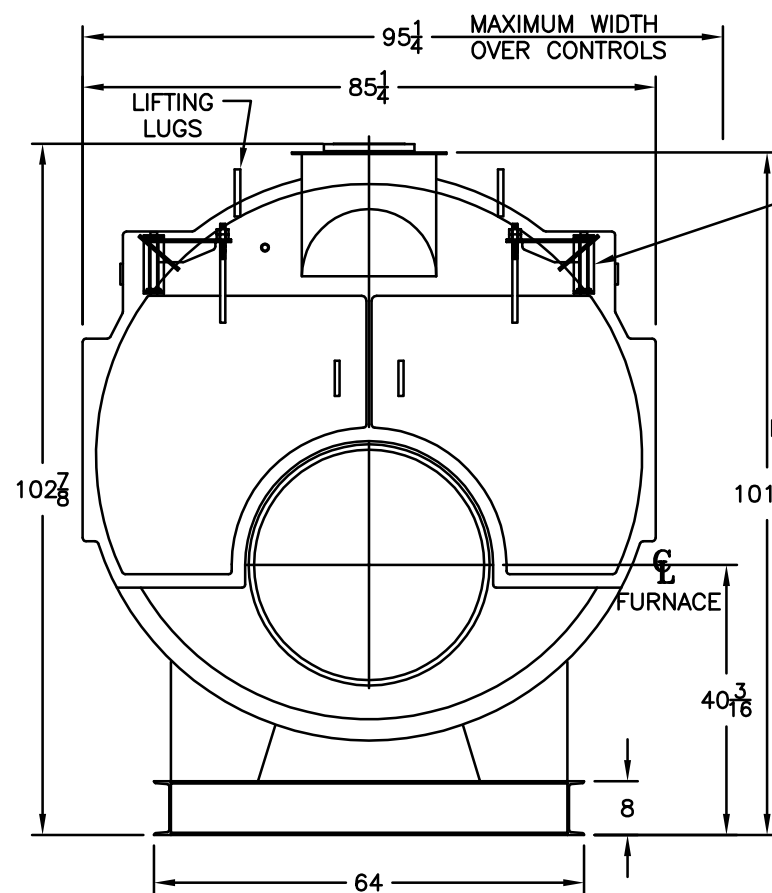
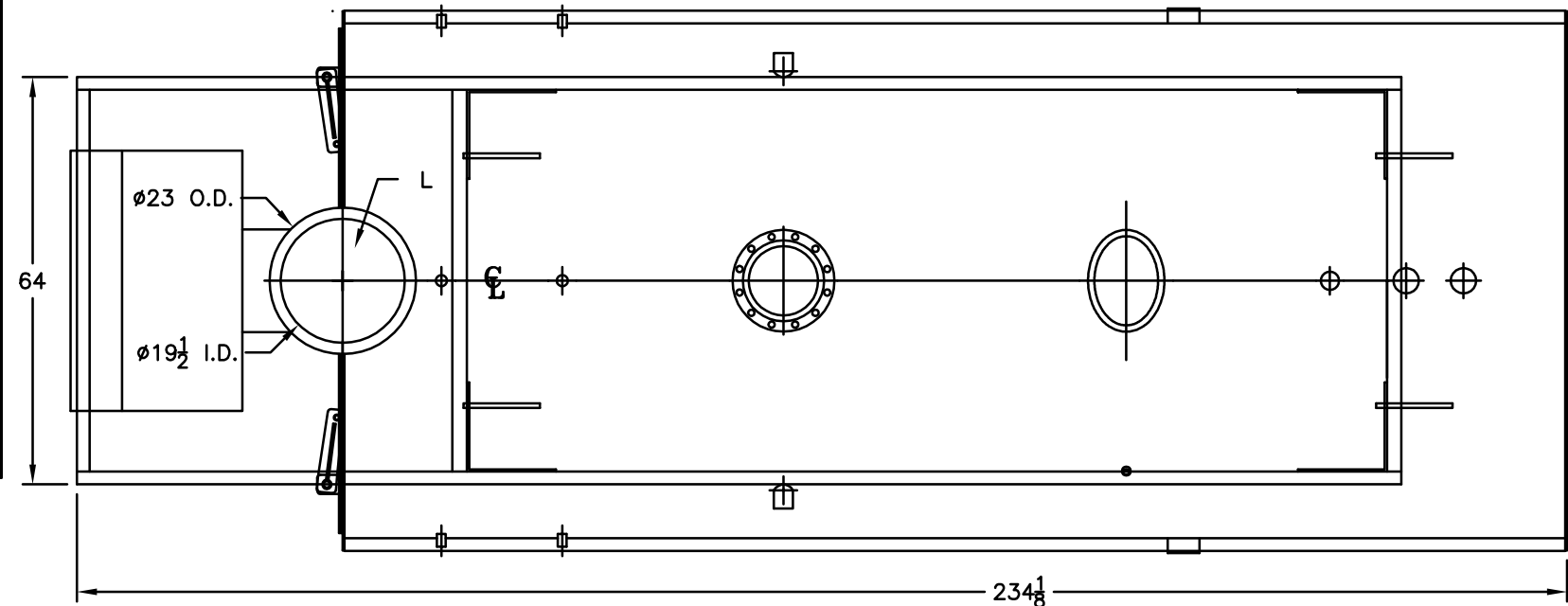
Water Content
 Pounds - 15533
 Gallons (U.S.) - 1862
 Approximate Weight/LBS.
 Dry - 18916
 Wet - 34449

LEGEND

BS = BOTH SIDES
 RS = RIGHT SIDE

LEGEND CONNECTIONS

- A = 10" FLANGED SUPPLY (150#)
- B = 4" RETURN
- C = 3" x 4" HANDHOLE
- D = 1" WATER COLUMN
- E = 3/4" AQUASTAT
- F = 2" BOTTOM BLOWDOWN
- G = 2" SURFACE BLOWOFF
- H = 2" AUXILIARY CONNECTION
- J = 3" SAFETY VALVE (2)
- K = 12" X 16" MANHOLE
- L = 20" NOMINAL FLUE DIAMETER



SPECIFICATIONS SUBJECT TO CHANGE WITHOUT NOTICE ALL CONNECTIONS ARE THREADED UNLESS OTHERWISE SPECIFIED
 THIS DOCUMENT CONTAINS CONFIDENTIAL INFORMATION WHICH IS THE PROPERTY OF BURNHAM COMMERCIAL. THIS DOCUMENT MAY NOT BE REPRODUCED, TRANSFERRED OR USED, OR ITS CONTENTS DISCLOSED, WITHOUT THE WRITTEN PERMISSION OF THE OWNER.

MODEL 4SL-300
319.5 BHP
15 PSI STEAM