

BURNHAM®

Commercial Boilers

LEGEND CONNECTIONS

- A = 6" FLANGED SUPPLY (300#)
- B = 2" RETURN
- C = 3" x 4" HANDHOLE
- D = 1" WATER COLUMN
- E = 3/4" AQUASTAT
- F = 2" BOTTOM BLOWDOWN
- G = 2" SURFACE BLOWOFF
- H = 2" AUXILIARY CONNECTION
- J = 1-1/2" SAFETY VALVE (2)
- K = 12" X 16" MANHOLE
- L = 20" NOMINAL FLUE DIAMETER

RATINGS AND DATA

Shell Diameter : 80"
 Gross Output - BHP : 250
 Gross Output - MBH : 8369
 Gross Output - Lbs/Hr : 8625
 Net Rating - MBH : 6696
 Net Rating - Sq. Ft. : 27900
 Safety Valve - Lbs/Hr. : 9763

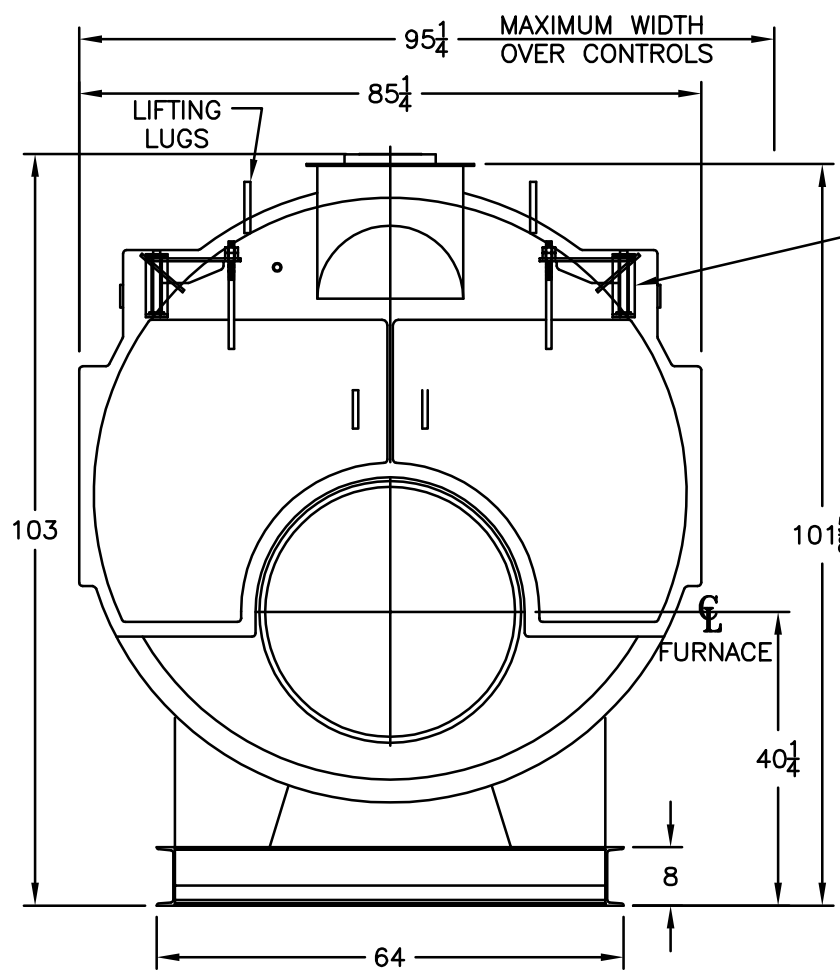
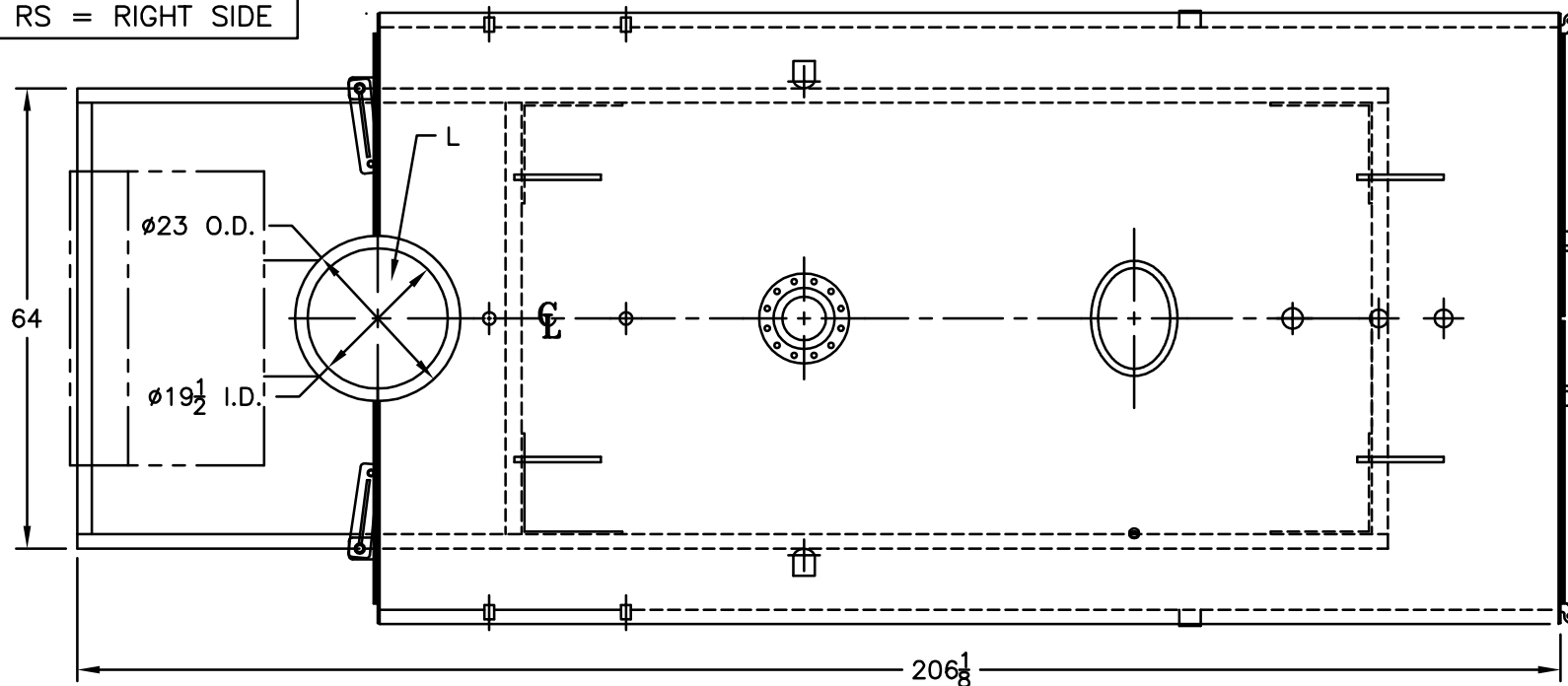
Heating Surface - Sq. Ft.
 Fireside - 1250
 Firetubes
 Number - 164
 Diameter - 2.5" O.D.

Firing Rate
 1000 BTU Gas (MBH) - 10461
 140000 BTU/Gal Oil (GPH) - 72.3
 150000 BTU/Gal Oil (GPH) - 67.5

Water Content
 Pounds - 13313
 Gallons (U.S.) - 1596
 Approximate Weight/LBS.
 Dry - 19633
 Wet - 32946

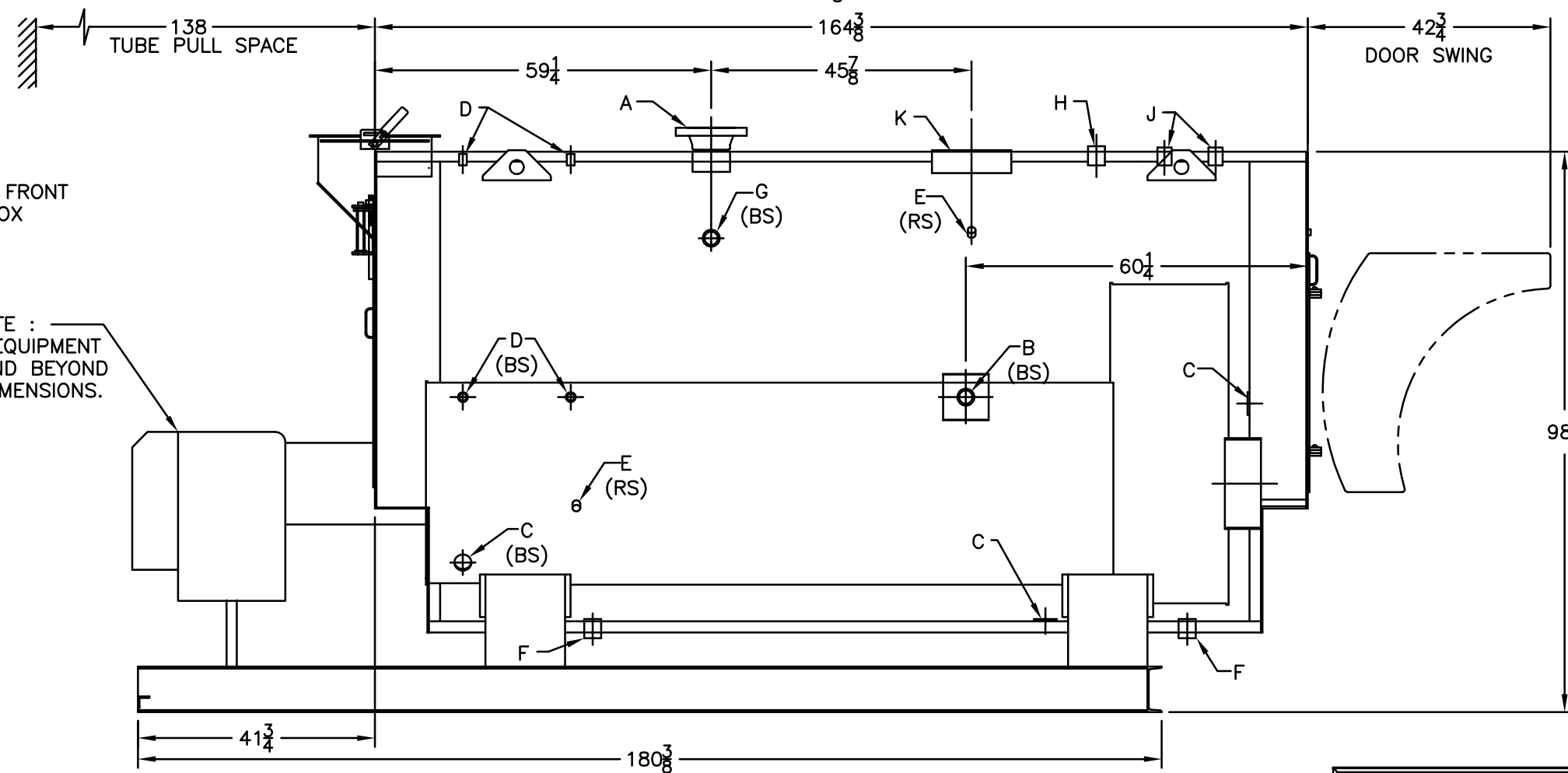
LEGEND

BS = BOTH SIDES
 RS = RIGHT SIDE



DAVIT FRONT SMOKEBOX DOORS

NOTE :
 BURNER EQUIPMENT
 MAY EXTEND BEYOND
 BOILER DIMENSIONS.



SPECIFICATIONS SUBJECT TO CHANGE WITHOUT NOTICE ALL CONNECTIONS ARE THREADED UNLESS OTHERWISE SPECIFIED
 THIS DOCUMENT CONTAINS CONFIDENTIAL INFORMATION WHICH IS THE PROPERTY OF BURNHAM COMMERCIAL. THIS DOCUMENT MAY NOT BE REPRODUCED, TRANSFERRED OR USED, OR ITS CONTENTS DISCLOSED, WITHOUT THE WRITTEN PERMISSION OF THE OWNER.

MODEL 4SP-250
250 BHP
150 PSI STEAM