

BURNHAM®

Commercial Boilers

RATINGS AND DATA

Shell Diameter : 98"
 Gross Output - BHP : 500
 Gross Output - MBH : 16738
 Gross Output - Lbs/Hr : 17250
 Net Rating - MBH : 13393
 Net Rating - Sq. Ft. : 55804
 Safety Valve - Lbs/Hr. : 19526

Heating Surface - Sq. Ft.
 Fireside - 2500
 Firetubes
 Number - 264
 Diameter - 2.5" O.D.

Firing Rate
 1000 BTU Gas (MBH) - 20922
 140000 BTU/Gal Oil (GPH) - 144.9
 150000 BTU/Gal Oil (GPH) - 135.2

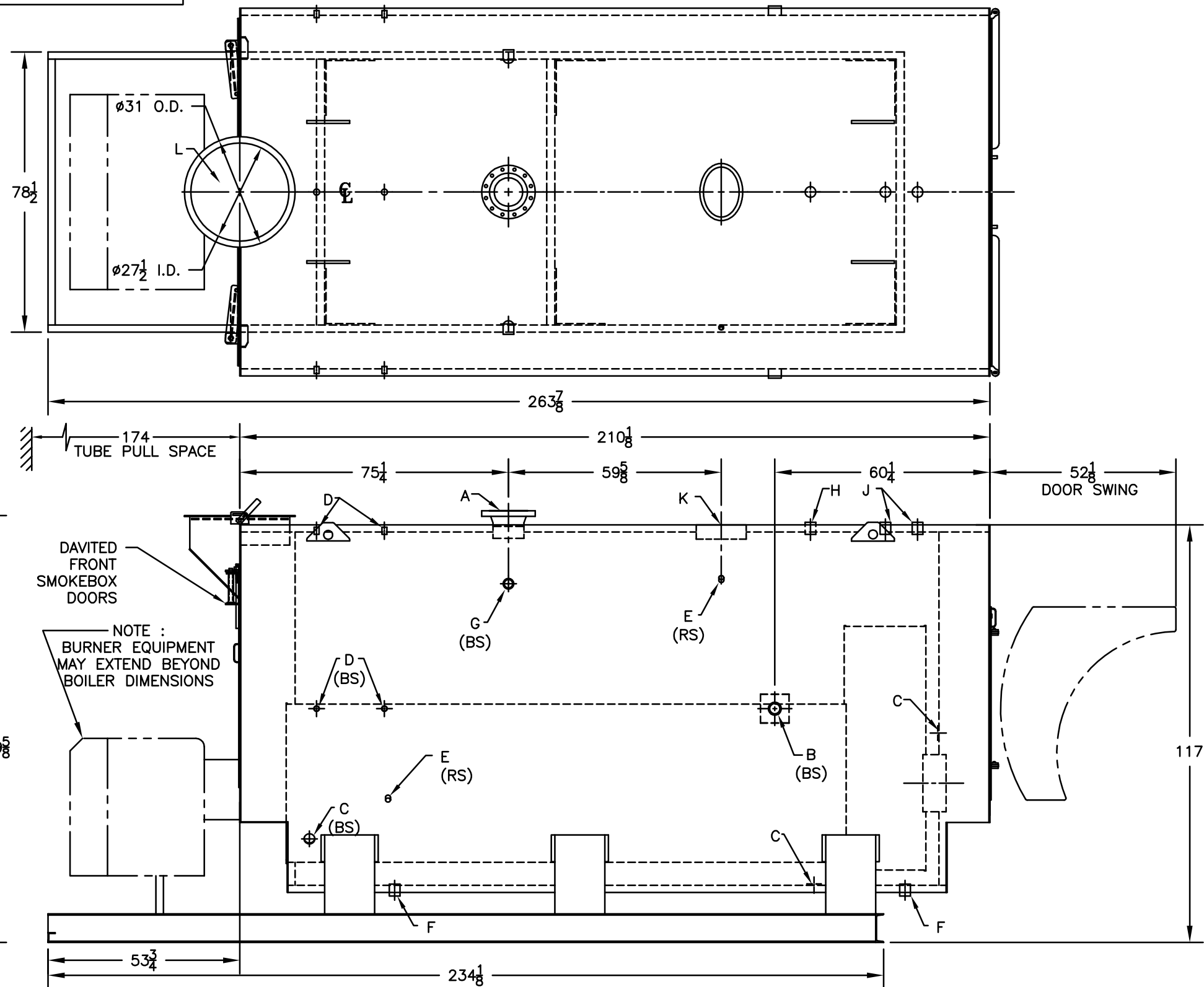
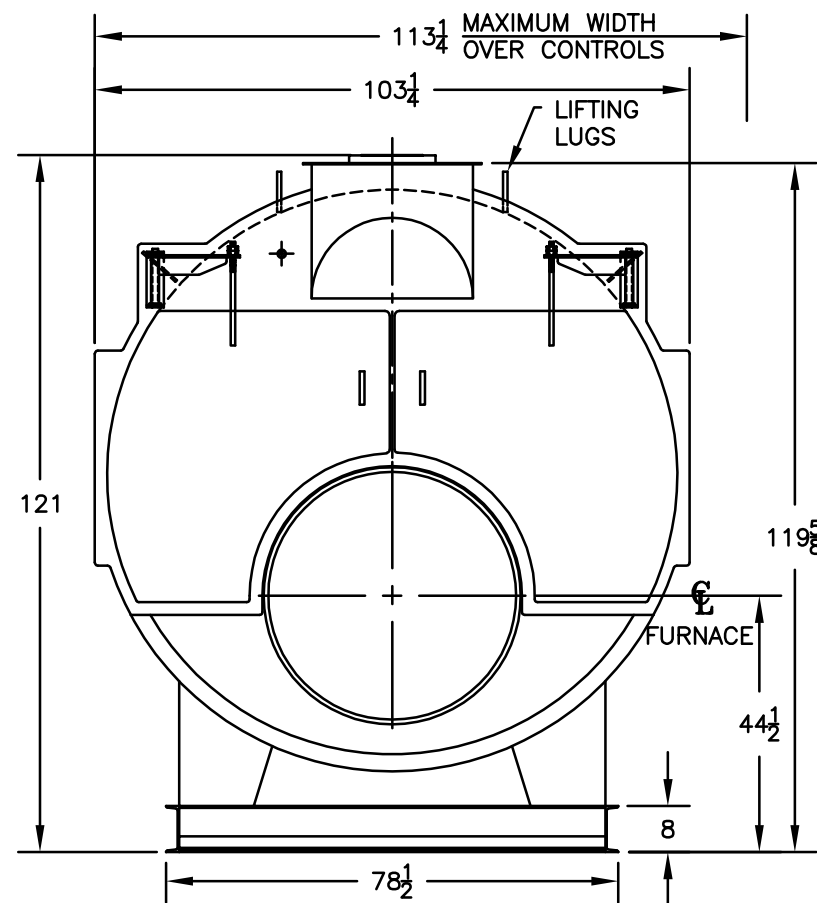
Water Content
 Pounds - 23446
 Gallons (U.S.) - 2811
 Approximate Weight/LBS.
 Dry - 34250
 Wet - 57696

LEGEND CONNECTIONS

- A = 8" FLANGED SUPPLY (300#)
- B = 2-1/2" RETURN
- C = 3" x 4" HANDHOLE
- D = 1" WATER COLUMN
- E = 3/4" AQUASTAT
- F = 2" BOTTOM BLOWDOWN
- G = 2" SURFACE BLOWOFF
- H = 2" AUXILIARY CONNECTION
- J = 2" SAFETY VALVE (2)
- K = 12" X 16" MANHOLE
- L = 28" NOMINAL FLUE DIAMETER

LEGEND

BS = BOTH SIDES
 RS = RIGHT SIDE



SPECIFICATIONS SUBJECT TO CHANGE WITHOUT NOTICE ALL CONNECTIONS ARE THREADED UNLESS OTHERWISE SPECIFIED

THIS DOCUMENT CONTAINS CONFIDENTIAL INFORMATION WHICH IS THE PROPERTY OF BURNHAM COMMERCIAL. THIS DOCUMENT MAY NOT BE REPRODUCED, TRANSFERRED OR USED, OR ITS CONTENTS DISCLOSED, WITHOUT THE WRITTEN PERMISSION OF THE OWNER.

MODEL 4SP-500
500 BHP
150 PSI STEAM

NOV 2015 TS-46-10-B