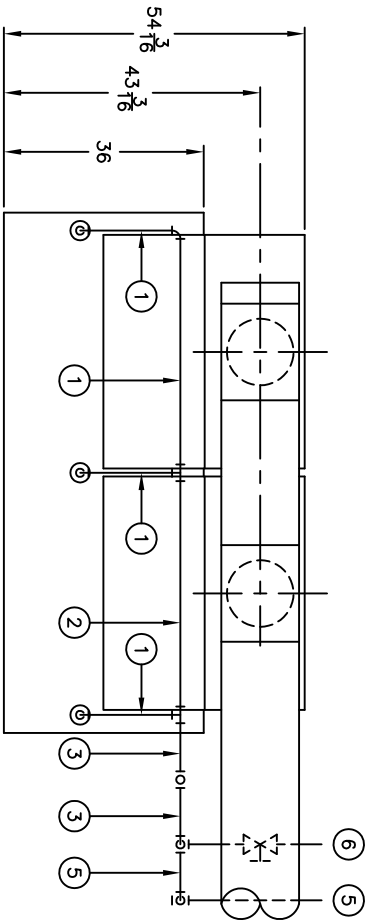
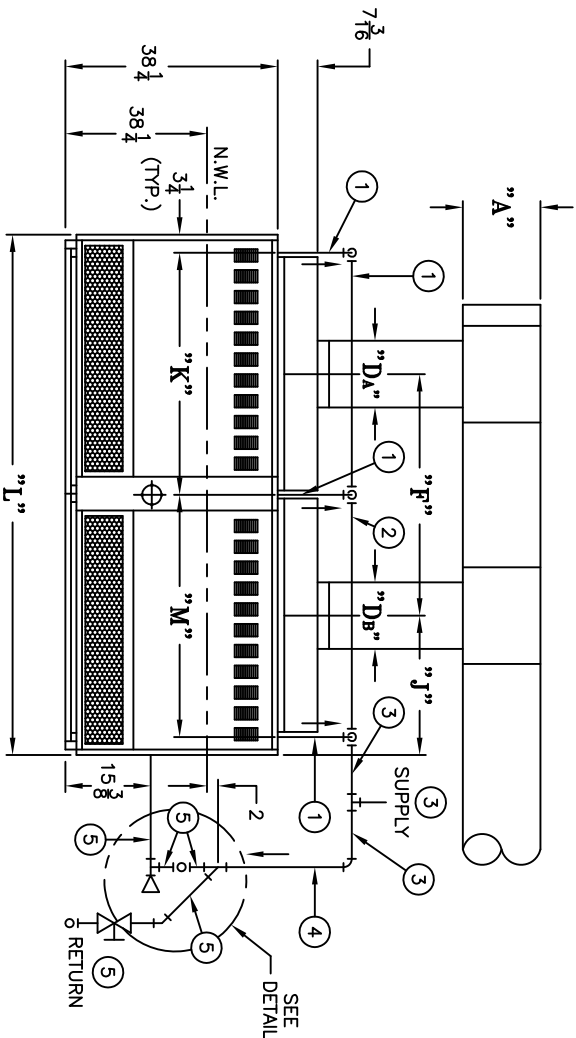


HARTFORD LOOP
RETURN CONNECTION
ALTERNATE PIPING DETAIL



PLAN VIEW

BOILER MODEL	"A"	"D _A "	"D _B "	"F"	"J"	"K"	"L"	"M"	RISER	HEADER	HEADER	EQUALIZER	RETURN	MAKE-UP WATER
5015	14"	12"	12"	38"	22 3/8"	38 1/4"	82 7/8"	38 1/4"	(1)	(2)	(3)	(4)	(5)	(6)
5016	14"	12"	12"	40 3/4"	25 1/8"	38 1/4"	88 1/4"	43 5/8"	3"	4"	5"	2 1/2"	2"	1 1/4"
5017	14"	12"	12"	43 1/2"	25 1/8"	43 5/8"	93 3/4"	43 5/8"	3"	4"	5"	2 1/2"	2"	1 1/4"
5018	16"	12"	12"	46 1/4"	27 7/8"	43 5/8"	99 1/4"	49 1/8"	3"	4"	5"	2 1/2"	2"	1 1/4"
5019	16"	12"	12"	49"	27 7/8"	49 1/8"	104 5/4"	49 1/8"	3"	4"	5"	2 1/2"	2"	1 1/4"



ELEVATION VIEW

- 1.) ALL PIPING IS SCHEDULE 40.
- 2.) PIPING AT REAR OF BOILER SHOULD NOT INTERFERE WITH REMOVAL OF UPPER REAR PANELS FOR ACCESS TO FLEUWAYS FOR CLEANING. THESE SCHEMATIC DRAWINGS ARE INTENDED SOLELY TO SHOW RECOMMENDED TAPPING LOCATIONS AND GENERAL PIPING ARRANGEMENTS. ACTUAL PIPING DETAILS SHOULD BE DESIGNED IN ACCORDANCE WITH STANDARD ENGINEERING PRACTICES.
- 3.) (1) SUPPLY CONNECTION AND (1) RETURN CONNECTION FOR SIZES 5015 THRU 5019.

				THIS DRAWING DEPICTS A GENERAL LAYOUT OF THE COMPONENTS (NOT NECESSARILY ALL INCLUSIVE) USED FOR A TYPICAL APPLICATION. THE PROPER SIZING, SELECTION, LOCATION AND INSTALLATION OF ALL COMPONENTS ARE THE RESPONSIBILITY OF THE DESIGNER OR INSTALLER.		PART NO.(S) DWG. DATE 10/05/00		
DRAWN TROS.	CHECKED DWO	DESIGNED DWO	APPROVED DWO	RELEASED	DWG. SCALE	REV. LEVEL	MINIMUM PIPING RECOMMENDATIONS SINGLE/STEAM 5015 THRU 5019	DRAWING NO. AE-5B-0165