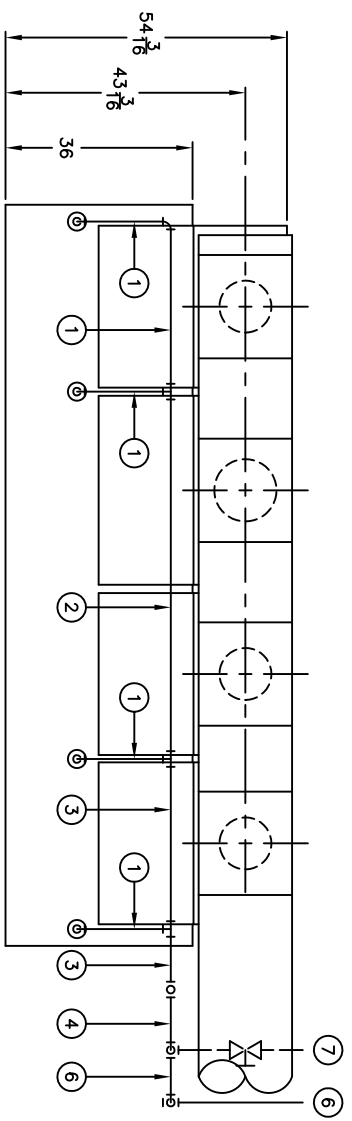
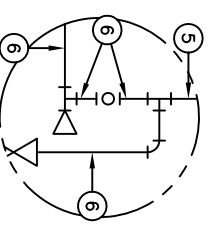
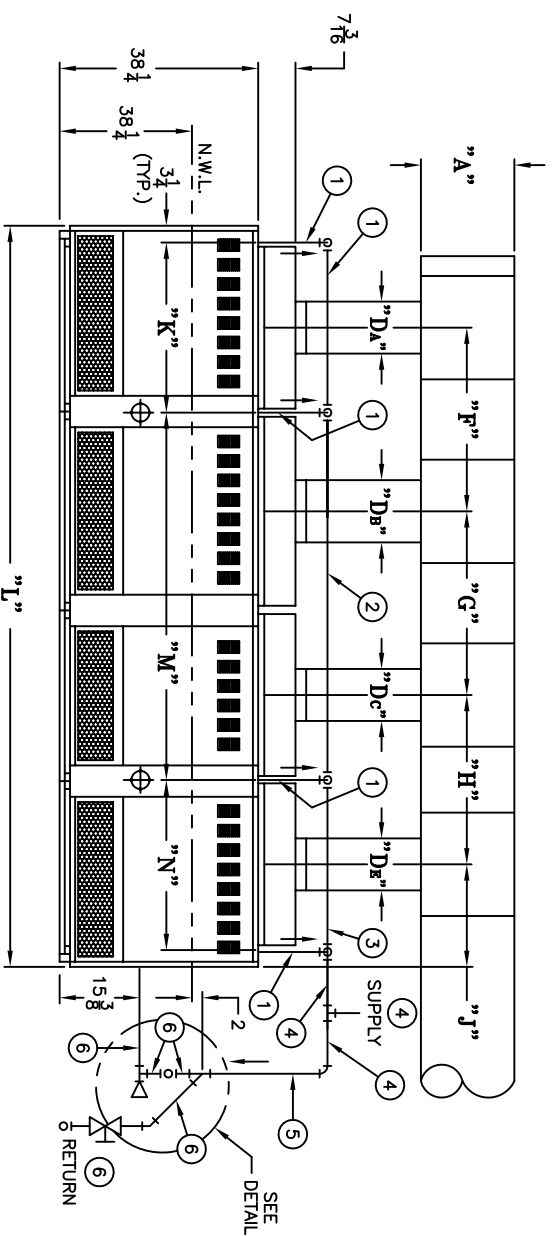


BOILER MODEL	"A"	"D _A "	"D _B "	"D _C "	"D _E "	"F"	"G"	"H"	"J"	"K"	"L"	"M"	"N"	RISER		HEADER		EQUALIZER		RETURN		MAKE-UP WATER
														(1)	(2)	(3)	(4)	(5)	(6)	(7)		
5024	18"	9"	10"	10"	10"	29 7/8"	32 5/8"	32 5/8"	19 3/4"	27 3/8"	131 3/4"	65 1/4"	32 3/4"	3"	3"	4"	4"	5"	6"	2 1/2"	2"	1 1/2"
5026	18"	10"	12"	10"	10"	35 3/8"	35 3/8"	32 5/8"	19 3/4"	32 3/4"	142 3/4"	70 3/4"	32 3/4"	3"	4"	5"	6"	3"	2 1/2"	2 1/2"	1 1/2"	

PLAN VIEW



ELEVATION VIEW



HARTFORD LOOP
RETURN CONNECTION
ALTERNATE PIPING DETAIL

- 1.) ALL PIPING IS SCHEDULE 40.
- 2.) PIPING AT REAR OF BOILER SHOULD NOT INTERFERE WITH REMOVAL OF UPPER REAR PANELS FOR ACCESS TO FLEUWAYS FOR CLEANING. THESE SCHEMATIC DRAWINGS ARE INTENDED SOLELY TO SHOW RECOMMENDED TAPPING LOCATIONS AND GENERAL PIPING ARRANGEMENTS. ACTUAL PIPING DETAILS SHOULD BE DESIGNED IN ACCORDANCE WITH STANDARD ENGINEERING PRACTICES.
- 3.) (3) SUPPLY CONNECTIONS AND (2) RETURN CONNECTIONS FOR SIZE 5021 AND 5022.

<p>THIS DRAWING DEPICTS A GENERAL LAYOUT OF THE COMPONENTS (NOT NECESSARILY ALL INCLUSIVE) USED FOR A TYPICAL APPLICATION. THE PROPER SIZING, SELECTION, LOCATION AND INSTALLATION OF ALL COMPONENTS ARE THE RESPONSIBILITY OF THE DESIGNER OR INSTALLER.</p>				<p>PART NO.(S) DWG. DATE 10/05/00</p>	
<p>Burnham HYDRAONICS DIVISION LANSHIRE, N. 17424-3576</p>				<p>DRAWING TITLE MINIMUM PIPING RECOMMENDATIONS SINGLE/STEAM 5024 AND 5026</p>	
DRAWN TOS.	CHECKED DWO	DESIGNED DWO	APPROVED DWO	RELEASED	DWG. SCALE
					REV. LEVEL
					AE-SB-0168