

V9A Series DIMENSIONS

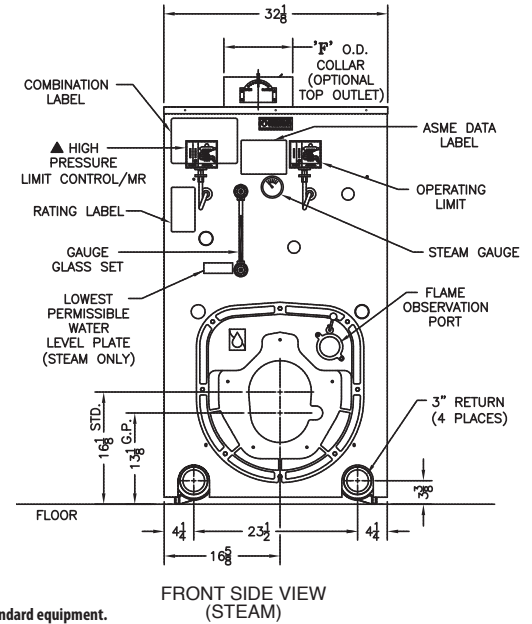
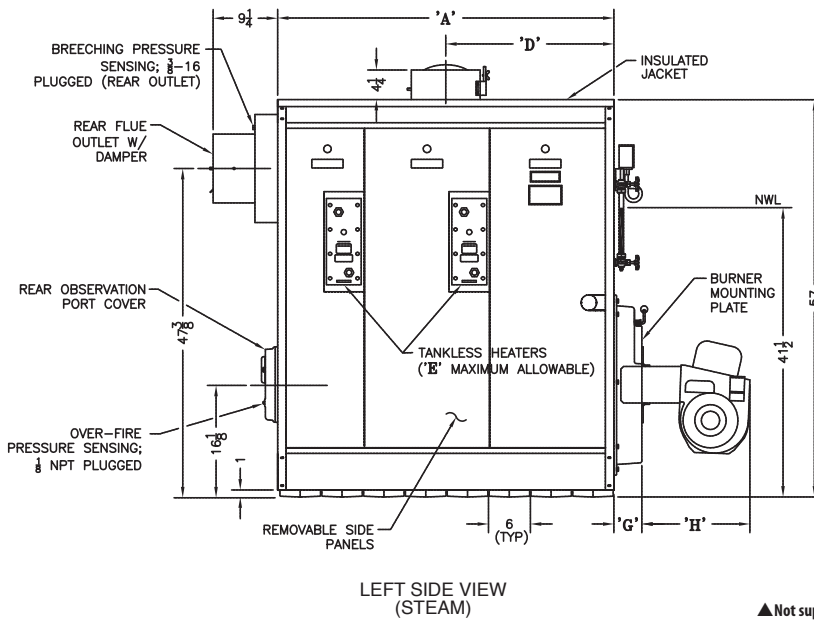


BOILER MODEL	# OF SECTIONS	'A'	'B'	# OF STEAM RISERS	'C'	'D'	MAX. HEATERS 'E'	FLUE OUTLET DIA. 'F'	BURNER MOUNTING PLATE/ BURNER DIMENSION*				APPROX. ASSEMB. SECTION WEIGHT LBS.	APPROX. K.D. BLR/ SHIP WEIGHT LBS. **		
									BECKETT		CARLIN	POWERFLAME			WEBSTER	
									'CF' 'G'/H'	'CG' 'G'/H'	'G'/H'	'JR.' 'G'/H'			'C' 'G'/H'	'JB' 'G'/H'
V903A	3	18-1/4	12	1	—	9-1/8	1	7	—	8 / 20-7/8	—	8 / 20-1/8	—	—	908	1278
V904A	4	24-1/4	18	1	—	12-1/8	1	7	8 / 11-3/4	8 / 21-5/8	8 / 23-1/4	8 / 20-1/8	8 / 30	—	1194	1590
V905A	5	30-1/4	24	1	—	15-1/8	1	8	8 / 11-3/4	8 / 21-5/8	4 / 27-3/8	8 / 20-1/8	8 / 30	4 / 25	1480	1902
V906A	6	36-1/4	30	1	—	18-1/8	2	8	4 / 20-5/8	4 / 21-5/8	4 / 27-3/8	4 / 20-1/8	4 / 30	4 / 25	1766	2218
V907A	7	42-1/4	36	2	—	21-1/8	2	8	4 / 20-5/8	4 / 28-5/8	4 / 27-3/8	4 / 23-5/8	4 / 30	4 / 25	2052	2534
V908A	8	48-1/4	42	2	—	24-1/8	2	10	4 / 20-5/8	4 / 28-5/8	4 / 27-3/8	4 / 23-5/8	4 / 35	4 / 25	2338	2846
V909A	9	54-1/4	48	2	—	27-1/8	3	10	4 / 21-1/8	4 / 29-1/8	4 / 29-7/8	4 / 23-5/8	4 / 35	4 / 25	2624	3227
V910A	10	60-1/4	54	2	—	30-1/8	3	10	4 / 21-1/8	4 / 29-1/8	4 / 29-7/8	—	4 / 35	4 / 25	2910	3559
V911A	11	66-1/4	60	2	—	33-1/8	3	12	4 / 22-5/8	4 / 29-1/8	4 / 29-7/8	—	4 / 35	4 / 25	3196	3870
V912A	12	72-1/4	66	3	30	36-1/8	4	12	4 / 22-5/8	4 / 29-1/2	4 / 29-7/8	—	4 / 35	4 / 25	3482	4197

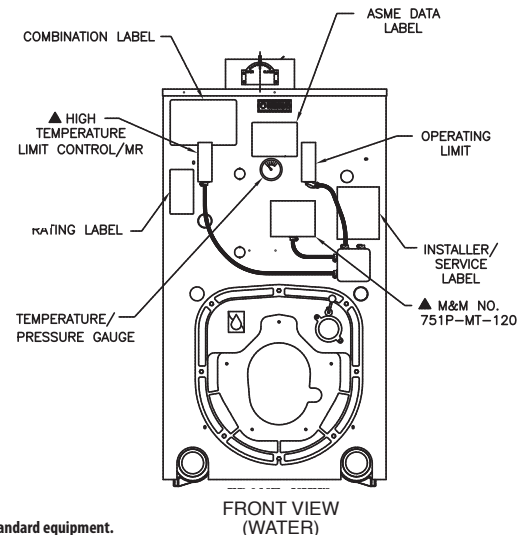
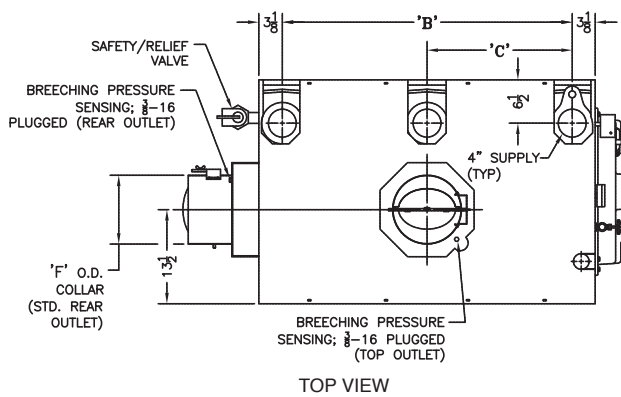
All dimensions in inches

* Burner control panel configuration may change this dimension. On JR burner, add 10" for optional panel.

** Does not include burner mounting plate (shipped separately). Add 55 lbs. for 4" standard burner mounting plate. Add 85 lbs. for 8" extended burner mounting plate



▲ Not supplied as standard equipment.



▲ Not supplied as standard equipment.