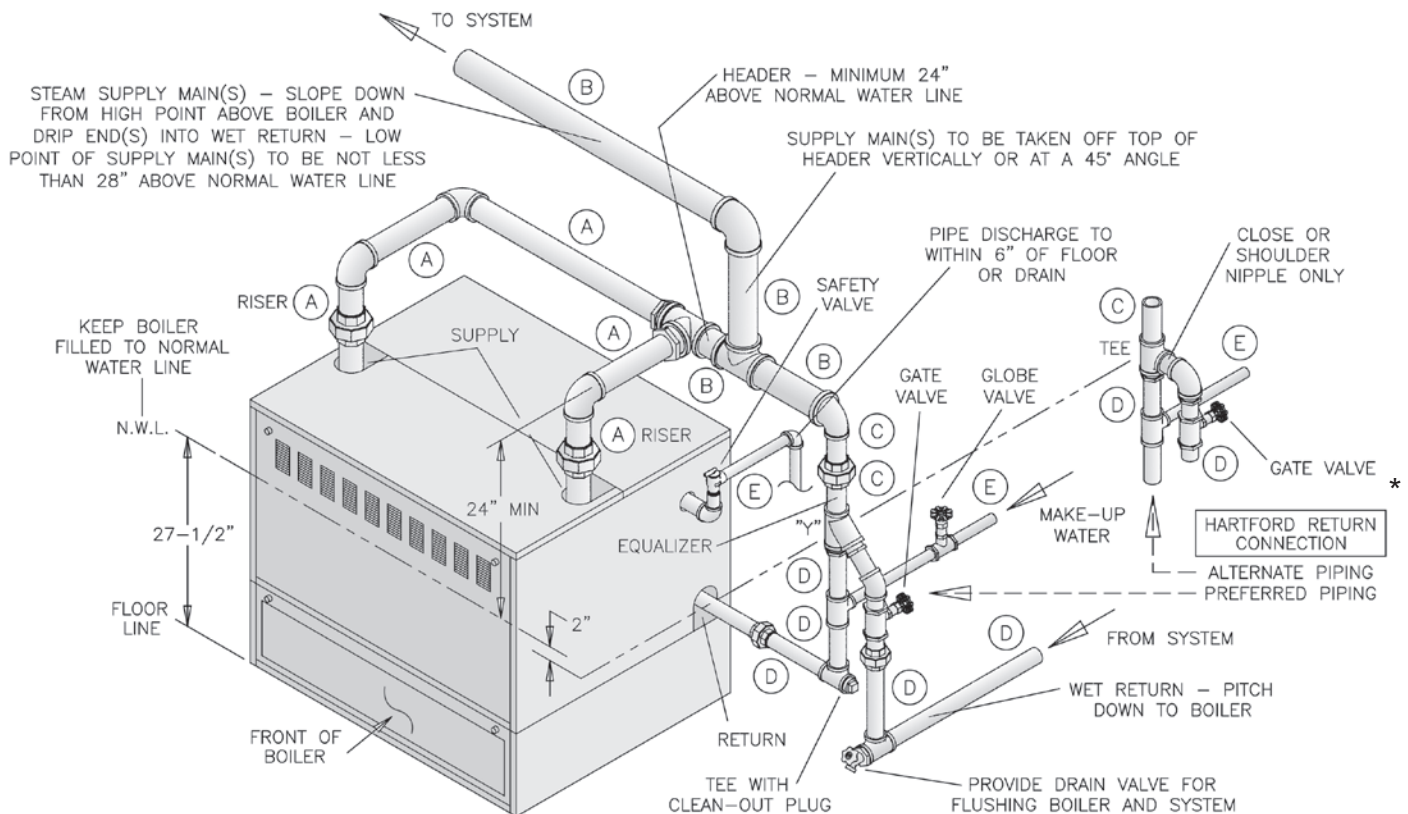


Series 5B PIPING RECOMMENDATIONS



STEAM BOILER—GRAVITY RETURN



1 or 2 Supply Connections - 5006 thru 5014

*Required on gravity return systems

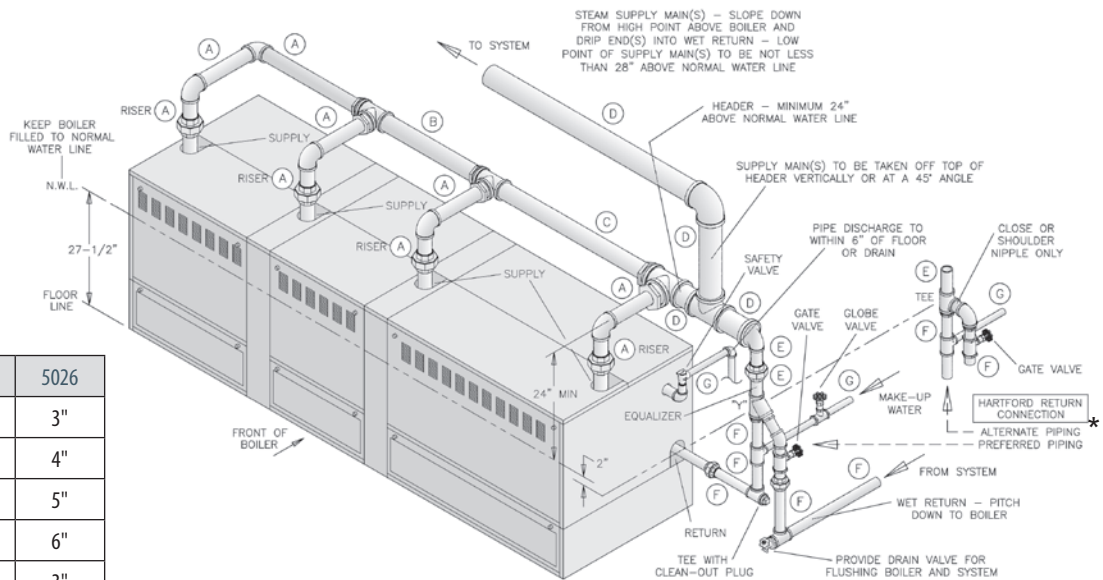
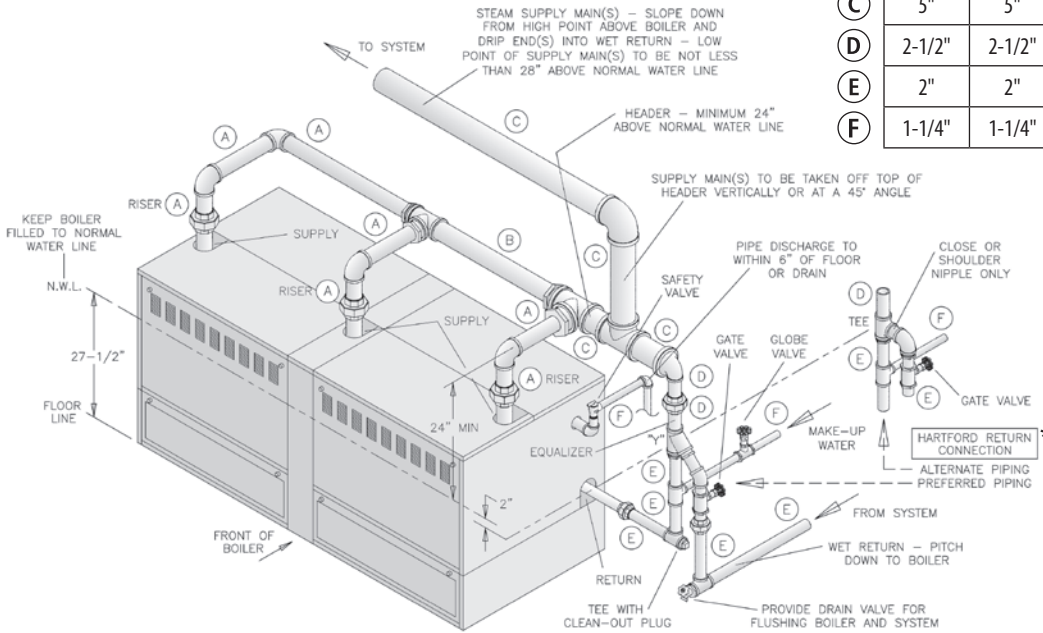
	5006	5007	5008	5009	5010	5011	5012	5013	5014
(A)	3"	3"	3"	3"	3"	3"	3"	3"	3"
(B)	3"	3"	4"	4"	4"	4"	5"	5"	5"
(C)	2"	2"	2"	2"	2-1/2"	2-1/2"	2-1/2"	2-1/2"	2-1/2"
(D)	1-1/2"	1-1/2"	1-1/2"	1-1/2"	2"	2"	2"	2"	2"
(E)	3/4"	3/4"	3/4"	3/4"	1"	1"	1"	1-1/4"	1-1/4"

Second supply riser optional on 5006 and 5007

STEAM BOILER—GRAVITY RETURN

(A)	3"	3"	3"	3"	3"	3"
(B)	4"	4"	4"	4"	4"	4"
(C)	5"	5"	5"	5"	5"	5"
(D)	2-1/2"	2-1/2"	2-1/2"	2-1/2"	2-1/2"	2-1/2"
(E)	2"	2"	2"	2"	2"	2"
(F)	1-1/4"	1-1/4"	1-1/4"	1-1/4"	1-1/4"	1-1/4"

3 supply connections
boiler sizes 5015 thru 5020
* Required on gravity return systems



	5021	5022	5024	5026
(A)	3"	3"	3"	3"
(B)	4"	4"	4"	4"
(C)	5"	5"	5"	5"
(D)	6"	6"	6"	6"
(E)	2-1/2"	2-1/2"	2-1/2"	3"
(F)	2"	2"	2"	2-1/2"
(G)	1-1/2"	1-1/2"	1-1/2"	1-1/2"

4 or 5 supply connections
boiler sizes 5021 thru 5026
* Required on gravity return systems