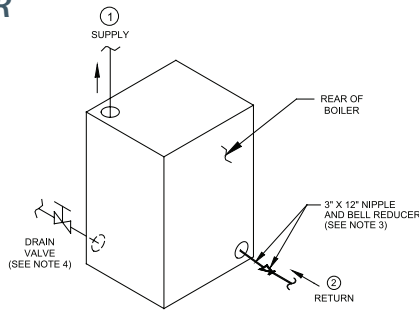


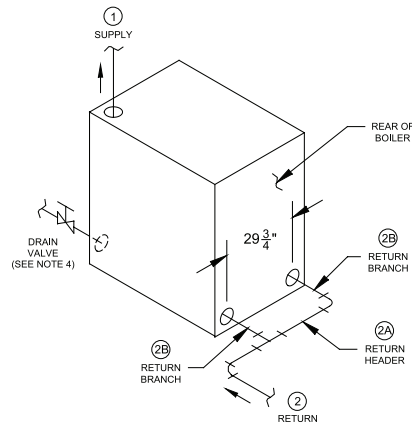
# V11H Series PIPING RECOMMENDATIONS



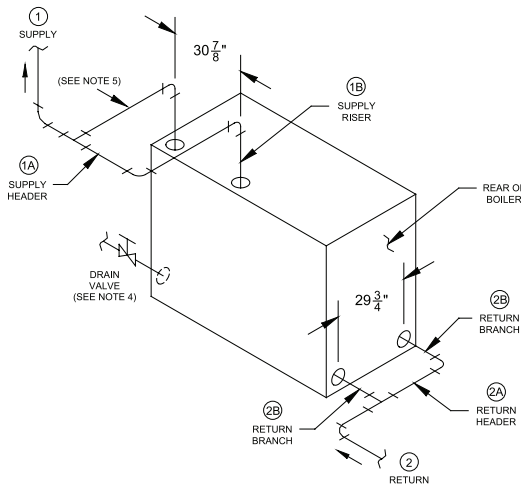
## WATER BOILER



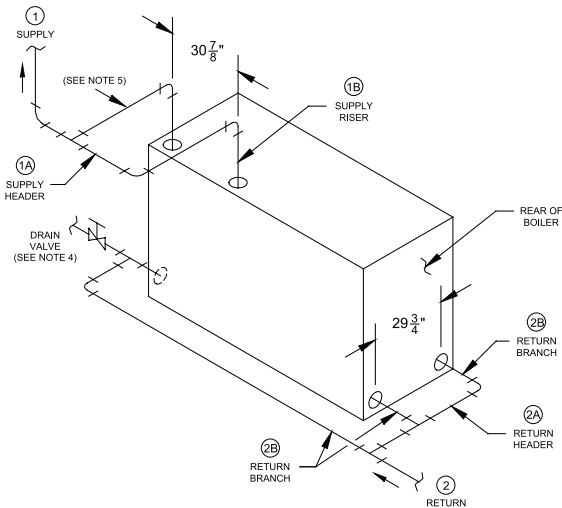
V1104H THRU V1108H (W/20°F DROP)  
V1104H THRU V1117H (W/40°F DROP)



V1109H THRU V1115H (W/20°F DROP)  
V1118H THRU V1123H (W/40°F DROP)



V1116H AND V1117H (W/20°F DROP)



V1118H THRU V1123H (W/20°F DROP)

## Pipe Sizing and Notes

### NOTES:

- All piping is schedule 40.
- Pipe size listed are based on a 20° F or 40° F differential (temperature drop). Select one to match application.
- When specified return piping size is less than 3", install 3" x 12" nipple and appropriate size bell reducer directly into boiler return tapping as shown.
- Drain valve—ball valve preferable, gate valve acceptable alternative (supplied by others). Minimum valve size per ASME code is 3/4" NPT.
- Swing joints on two riser systems may be piped over the top of the boiler if space is limited.
- Boilers require protection from flue gas condensation and thermal shock when operating below 135°F return water temperatures

BOILER MODEL	SUPPLY PIPING SIZE IN INCHES						RETURN PIPING SIZE IN INCHES					
	(1) SUPPLY		(1A) SUPPLY HEADER		(1B) SUPPLY RISER (QTY.) SIZE		(2) RETURN		(2A) RETURN HEADER		(2B) RETURN BRANCH (QTY.) SIZE	
	20° F DROP	40° F DROP	20° F DROP	40° F DROP	20° F DROP	40° F DROP	20° F DROP	40° F DROP	20° F DROP	40° F DROP	20° F DROP	40° F DROP
V1104H	2-1/2	2	—	—	—	—	2-1/2	2	—	—	—	—
V1105H	2-1/2	2	—	—	—	—	2-1/2	2	—	—	—	—
V1106H	2-1/2	2	—	—	—	—	2-1/2	2	—	—	—	—
V1107H	3	2	—	—	—	—	3	2	—	—	—	—
V1108H	3	2	—	—	—	—	3	2	—	—	—	—
V1109H	4	2-1/2	—	—	—	—	4	2-1/2	3	—	(2) 3	—
V1110H	4	2-1/2	—	—	—	—	4	2-1/2	3	—	(2) 3	—
V1111H	4	2-1/2	—	—	—	—	4	2-1/2	3	—	(2) 3	—
V1112H	4	3	—	—	—	—	4	3	3	—	(2) 3	—
V1113H	4	3	—	—	—	—	4	3	3	—	(2) 3	—
V1114H	4	3	—	—	—	—	4	3	3	—	(2) 3	—
V1115H	4	3	—	—	—	—	4	3	3	—	(2) 3	—
V1116H	5	3	3	—	(2) 3	—	5	3	3	—	(2) 3	—
V1117H	5	3	3	—	(2) 3	—	5	3	3	—	(2) 3	—
V1118H	5	4	4	—	(2) 4	—	5	4	4	3	(3) 3	(2) 3
V1119H	5	4	4	—	(2) 4	—	5	4	4	3	(3) 3	(2) 3
V1120H	5	4	4	—	(2) 4	—	5	4	4	3	(3) 3	(2) 3
V1121H	5	4	4	—	(2) 4	—	5	4	5	3	(3) 3	(2) 3
V1122H	5	4	4	—	(2) 4	—	5	4	5	3	(3) 3	(2) 3
V1123H	5	4	4	—	(2) 4	—	5	4	5	3	(3) 3	(2) 3