

PROJECT: STANDARD BOILER

**LEGEND**

BS = BOTH SIDES  
RS = RIGHT SIDE  
LS = LEFT SIDE

**BURNHAM**<sup>®</sup>  
Commercial Boilers

**RATINGS AND DATA**

Shell Diameter : 78"  
Gross Output - BHP : 300  
Gross Output - MBH : 10043  
Gross Output - Lbs/Hr : 10350  
Net Rating - MBH : 7797  
Net Rating - Sq. Ft. : 32488  
Safety Valve - Lbs/Hr. : 11716

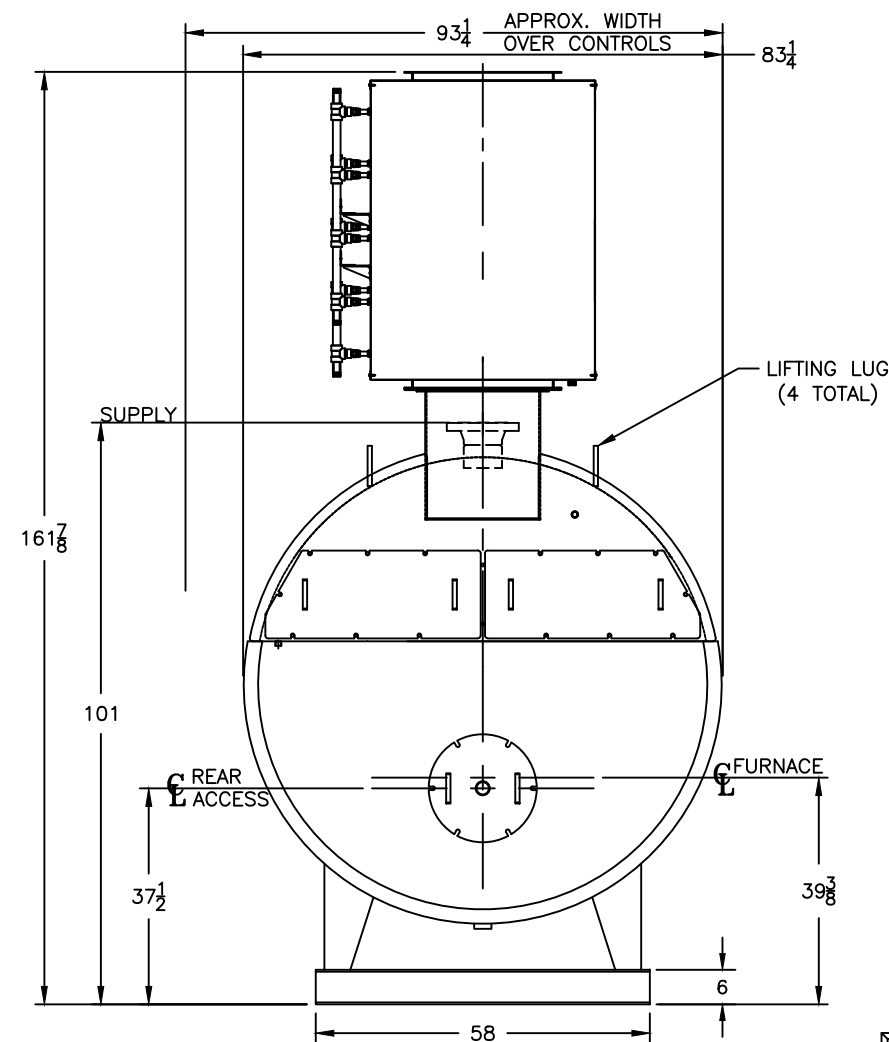
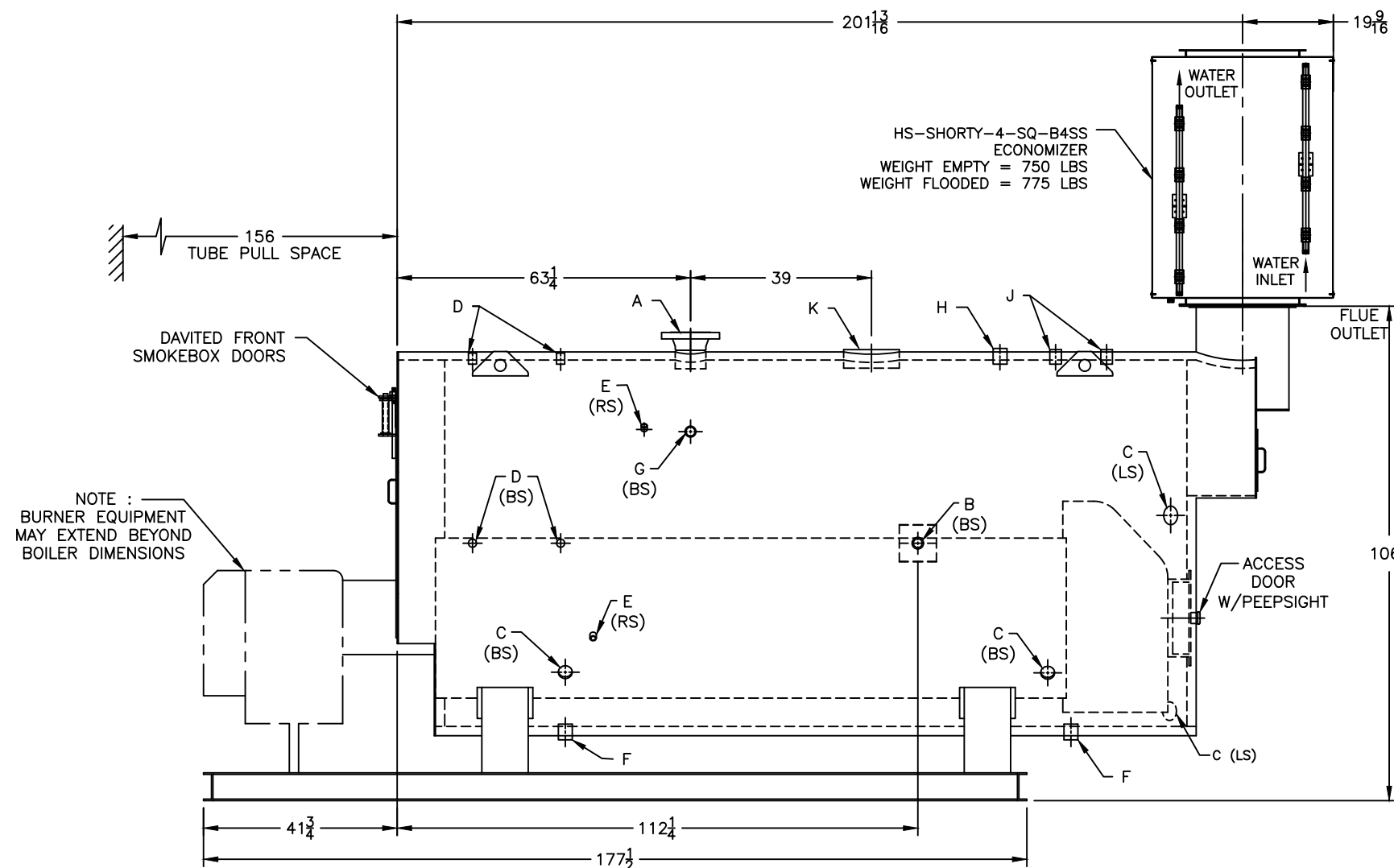
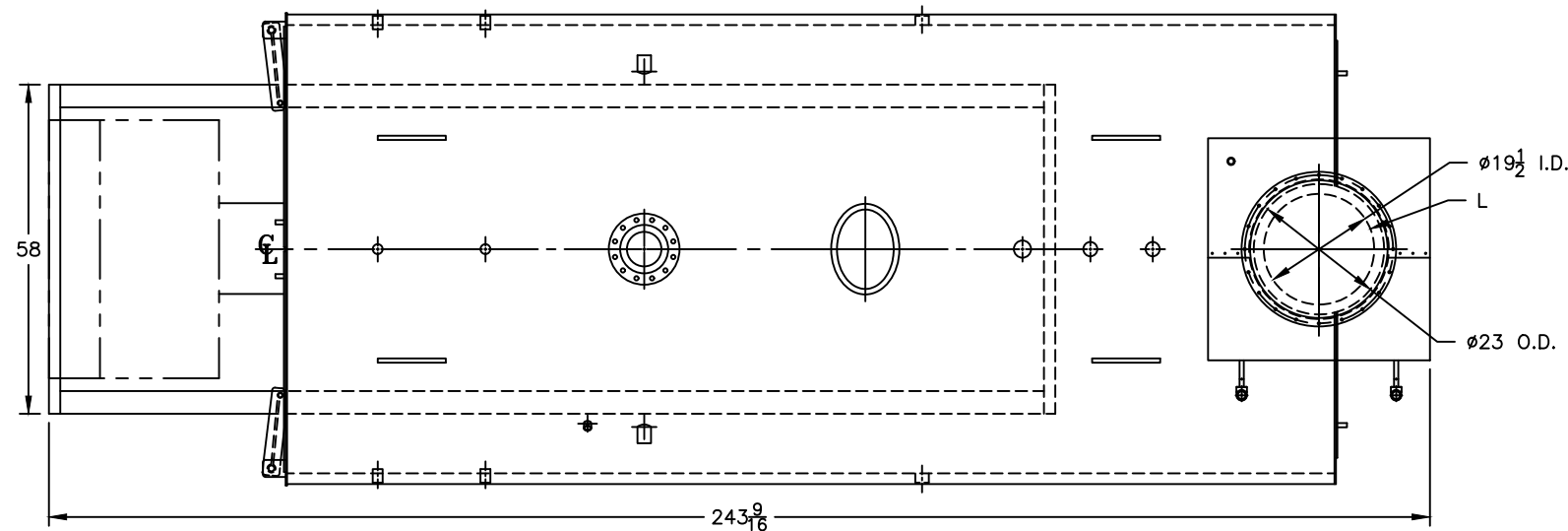
**LEGEND CONNECTIONS**

A = 6" FLANGED SUPPLY (300#)  
B = 2" RETURN  
C = 3" x 4" HANDHOLE  
D = 1" WATER COLUMN  
E = 3/4" AQUASTAT  
F = 2" BOTTOM BLOWDOWN  
G = 2" SURFACE BLOWOFF  
H = 2" AUXILIARY CONNECTION  
J = 1-1/2" SAFETY VALVE (2)  
K = 12" x 16" MANHOLE  
L = 20" NOMINAL FLUE DIAMETER

Heating Surface - Sq. Ft.  
Fireside - 1500  
Firetubes  
Number - 186  
Diameter - 2.5" O.D.

Firing Rate  
1000 BTU/Gal Gas (MBH) - 12553  
140000 BTU/Gal Oil (GPH) - 86.3  
150000 BTU/Gal Oil (GPH) - 80.5

Water Content  
Pounds - 13315  
Gallons (U.S.) - 1599  
Approximate Weight/LBS.  
(Includes Economizer)  
Dry - 22385  
Wet - 35700



**MODEL 3P-300**  
**300 BHP**  
**150 PSI STEAM**

SPECIFICATIONS SUBJECT TO CHANGE WITHOUT NOTICE ALL CONNECTIONS ARE THREADED UNLESS OTHERWISE SPECIFIED

THIS DOCUMENT CONTAINS CONFIDENTIAL INFORMATION WHICH IS THE PROPERTY OF BURNHAM COMMERCIAL. THIS DOCUMENT MAY NOT BE REPRODUCED, TRANSFERRED OR USED, OR ITS CONTENTS DISCLOSED, WITHOUT THE WRITTEN PERMISSION OF THE OWNER.