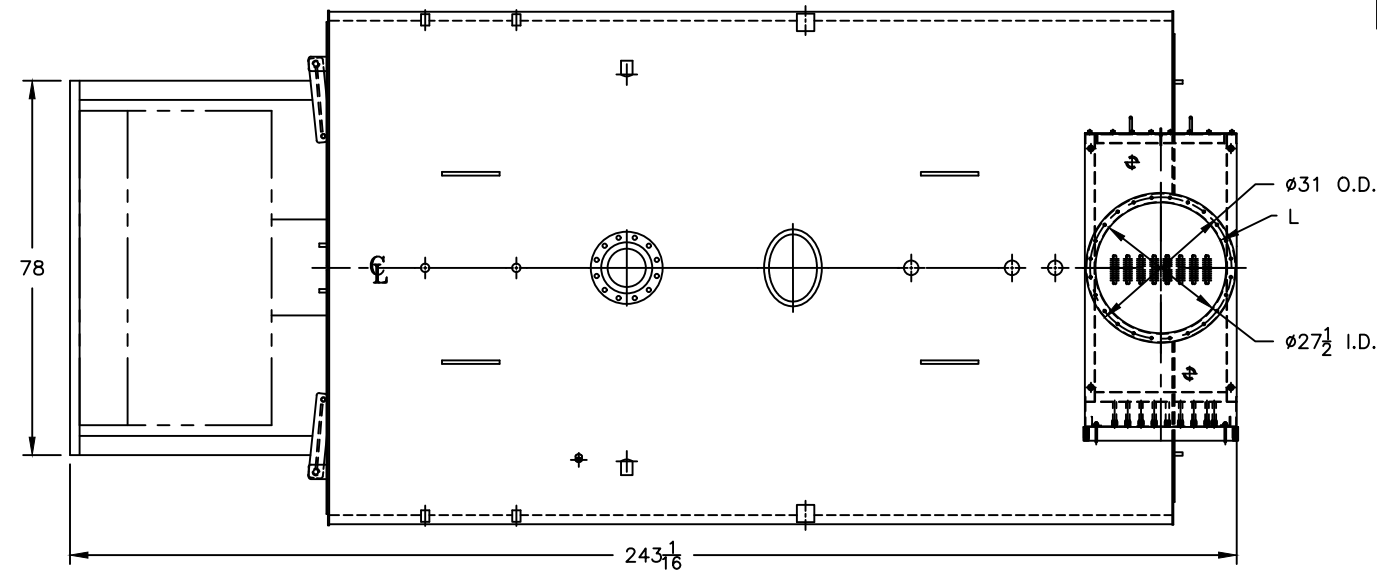


PROJECT: STANDARD BOILER



LEGEND

- BS = BOTH SIDES
- RS = RIGHT SIDE
- LS = LEFT SIDE

BURNHAM®
Commercial Boilers

LEGEND CONNECTIONS

- A = 8" FLANGED SUPPLY (300#)
- B = 2-1/2" RETURN
- C = 3" x 4" HANDHOLE
- D = 1" WATER COLUMN
- E = 3/4" AQUASTAT
- F = 2" BOTTOM BLOWDOWN
- G = 2" SURFACE BLOWOFF
- H = 2" AUXILIARY CONNECTION
- J = 2" SAFETY VALVE (2)
- K = 12" x 16" MANHOLE
- L = 28" NOMINAL FLUE DIAMETER

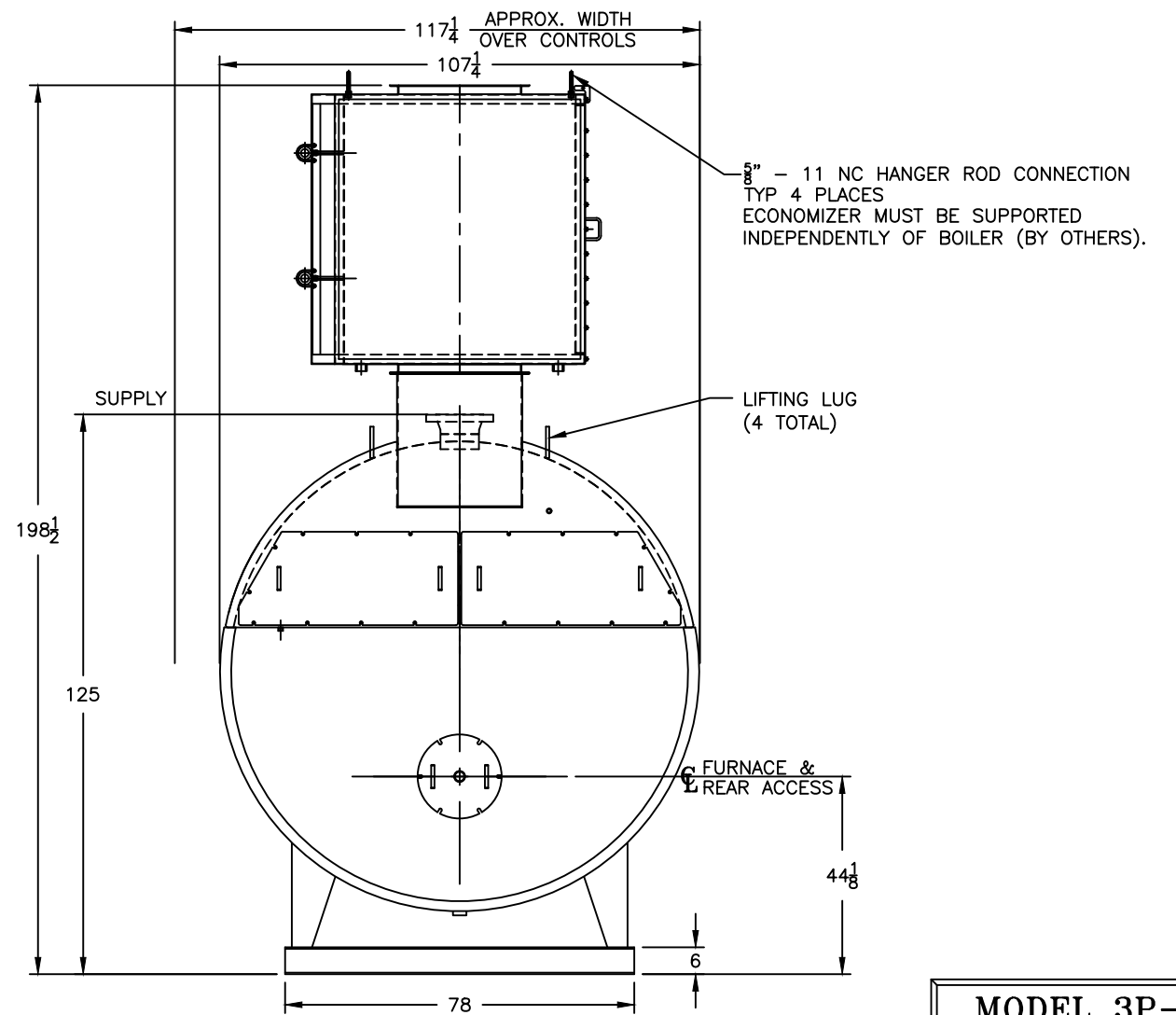
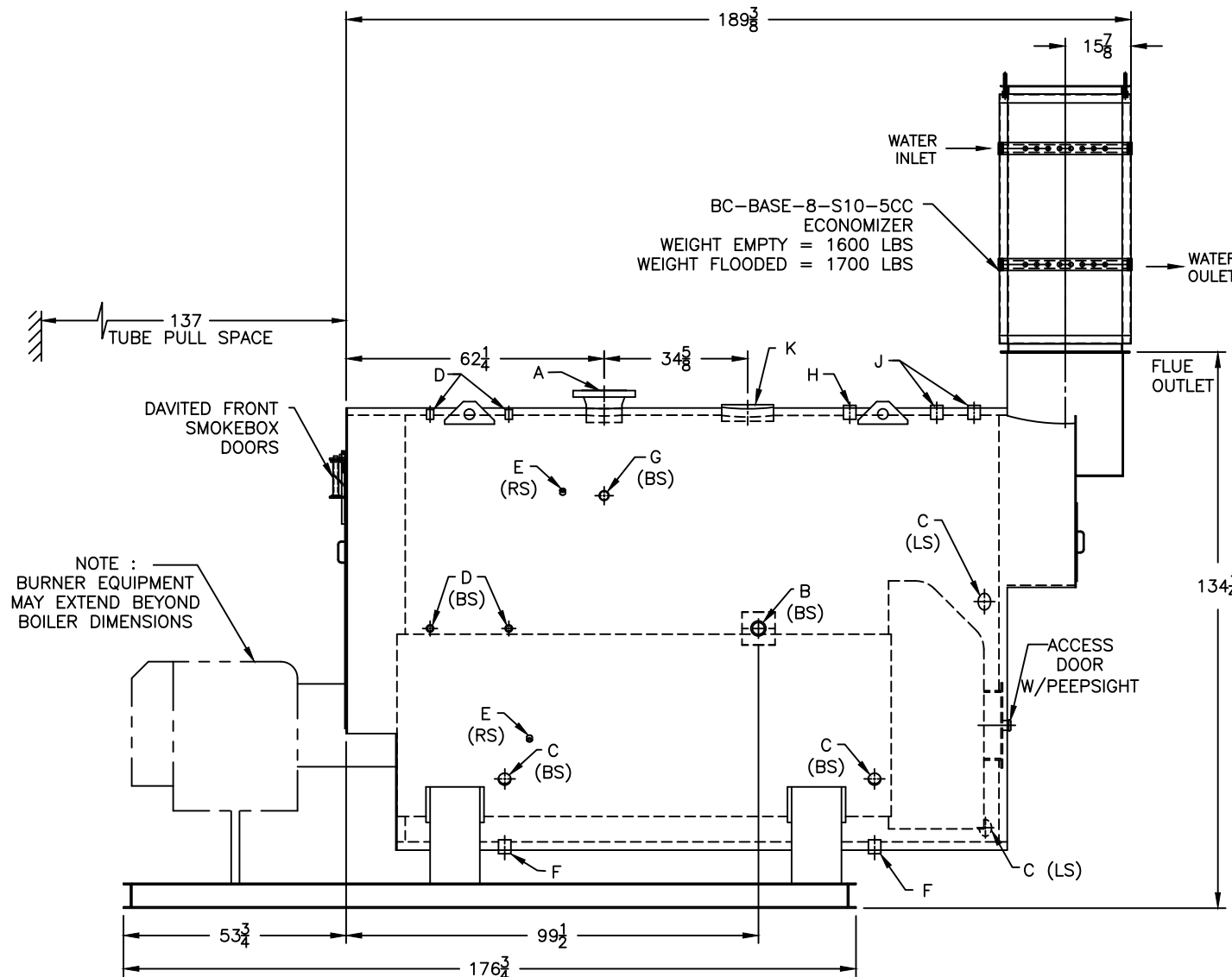
RATINGS AND DATA

Shell Diameter : 102"
 Gross Output - BHP : 500
 Gross Output - MBH : 16738
 Gross Output - Lbs/Hr : 17250
 Net Rating - MBH : 12995
 Net Rating - Sq. Ft. : 54146
 Safety Valve - Lbs/Hr. : 19526

Heating Surface - Sq. Ft.
 Fireside - 2500
 Firetubes
 Number - 362
 Diameter - 2.5" O.D.

Firing Rate
 1000 BTU Gas (MBH) - 20922
 140000 BTU/Gal Oil (GPH) - 143.3
 150000 BTU/Gal Oil (GPH) - 133.7

Water Content
 Pounds - 20371
 Gallons (U.S.) - 2446
 Approximate Weight/LBS.
 (Includes Economizer)
 Dry - 32156
 Wet - 52527



MODEL 3P-500
500 BHP
150 PSI STEAM

SPECIFICATIONS SUBJECT TO CHANGE WITHOUT NOTICE ALL CONNECTIONS ARE THREADED UNLESS OTHERWISE SPECIFIED

THIS DOCUMENT CONTAINS CONFIDENTIAL INFORMATION WHICH IS THE PROPERTY OF BURNHAM COMMERCIAL. THIS DOCUMENT MAY NOT BE REPRODUCED, TRANSFERRED OR USED, OR ITS CONTENTS DISCLOSED, WITHOUT THE WRITTEN PERMISSION OF THE OWNER.