

BURNHAM®

Commercial Boilers

RATINGS AND DATA

Shell Diameter : 90"
 Gross Output - BHP : 363.1
 Gross Output - MBH : 12155
 Net Rating - MBH : 10570
 Safety Valve - MBH : 14000

Heating Surface - Sq. Ft.
 Fireside - 1750
 Firetubes
 Number - 268
 Diameter - 2.5" O.D.

Firing Rate
 1000 BTU Gas (MBH) - 14645
 140,000 BTU/GAL Oil (GPH) - 100.1
 150,000 BTU/GAL Oil (GPH) - 93.4

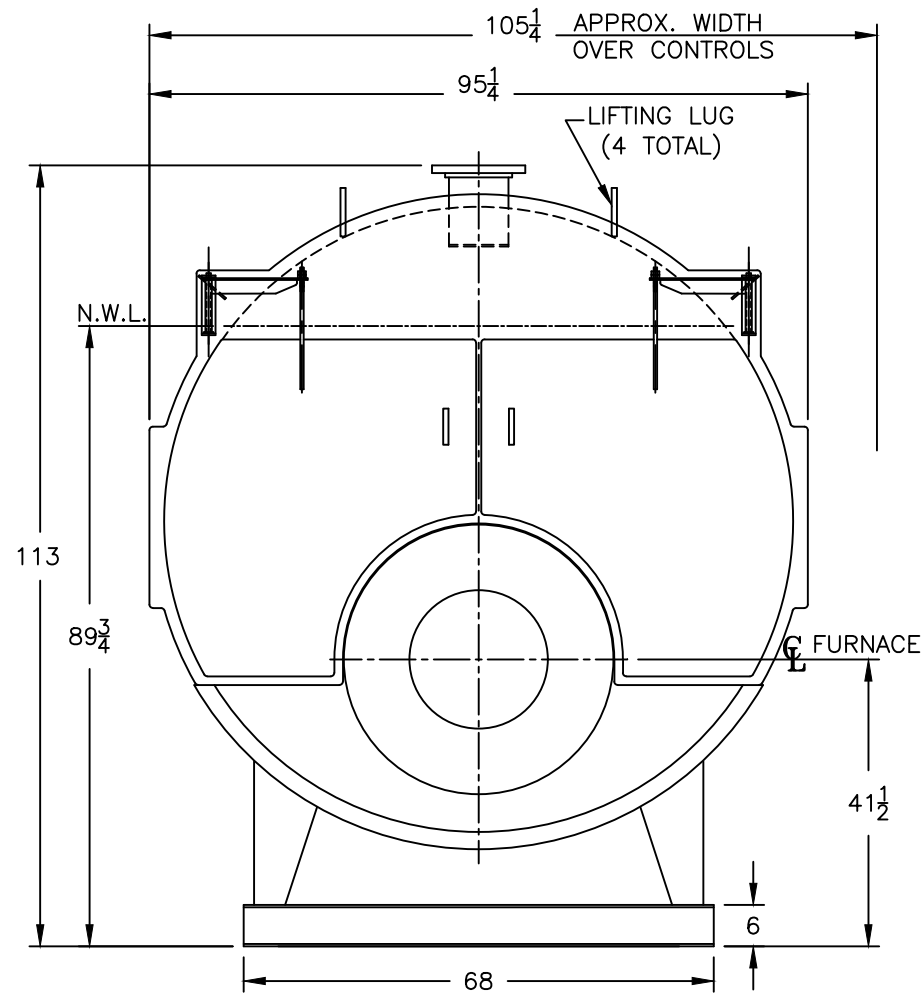
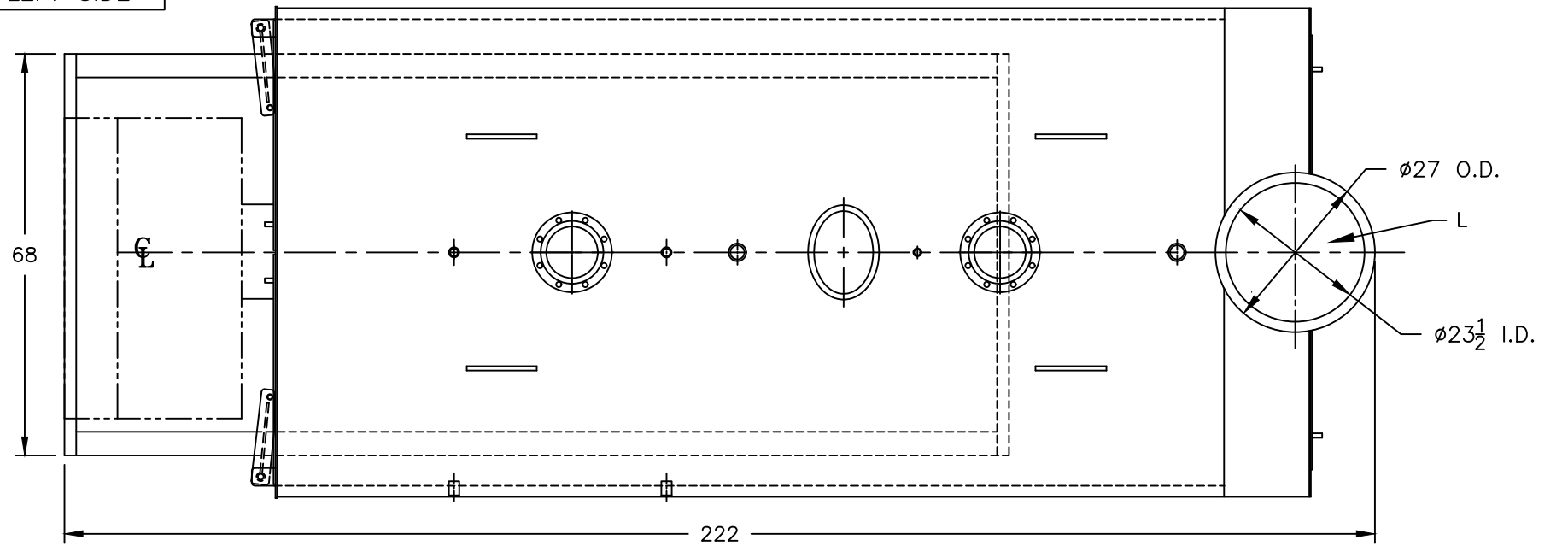
Water Content
 Pounds - 17780
 Gallons (U.S.) - 2136
 Approximate Weight/LBS.
 Dry - 23700
 Wet - 41490

LEGEND

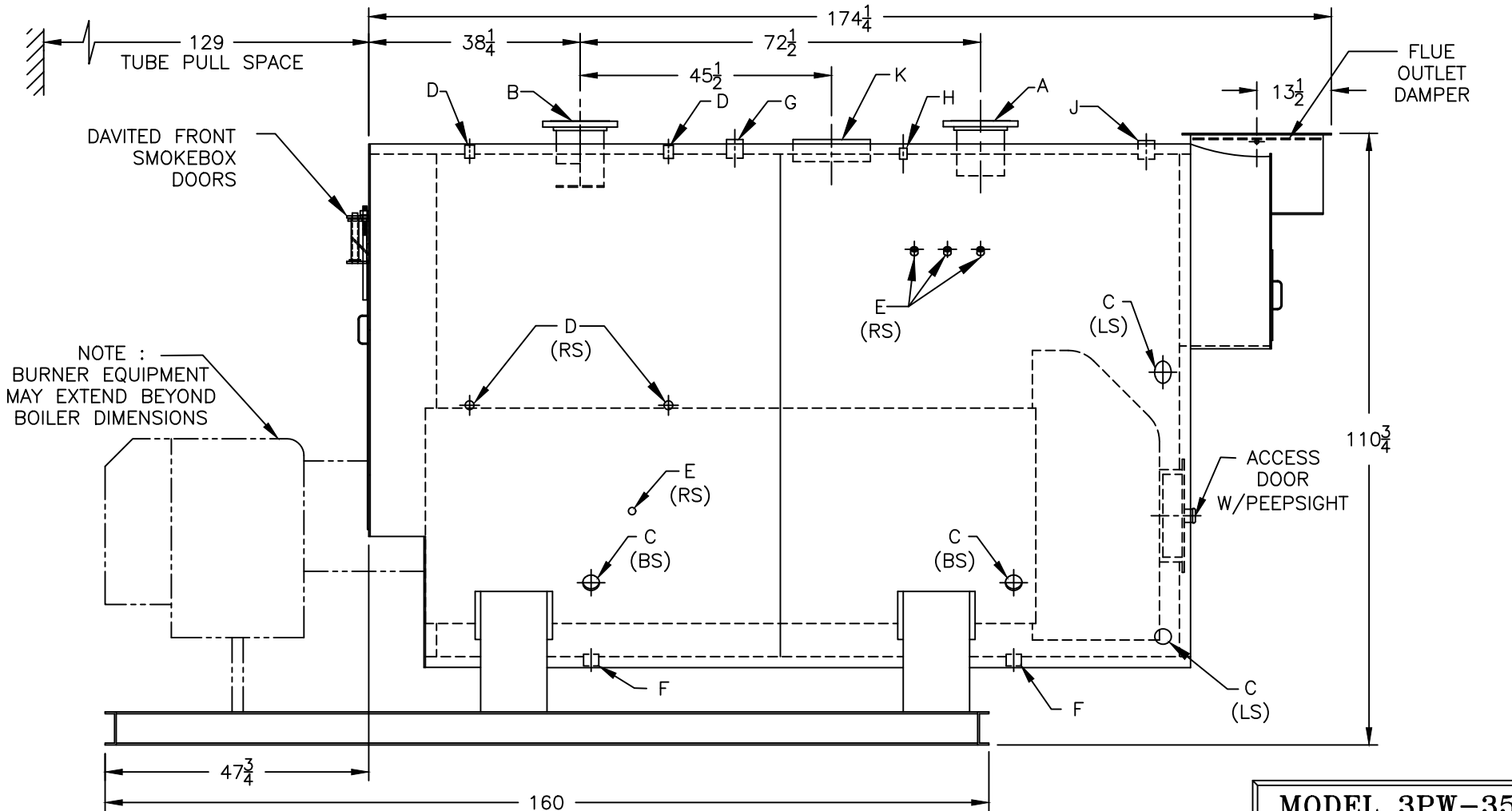
BS = BOTH SIDES
 RS = RIGHT SIDE
 LS = LEFT SIDE

LEGEND CONNECTIONS

- A = 8" FLANGED SUPPLY (150#)
- B = 8" FLANGED RETURN (150#)
- C = 3" x 4" HANDHOLE
- D = 1" WATER COLUMN
- E = 3/4" AQUASTAT
- F = 2" BOTTOM DRAIN
- G = 2" EXPANSION TANK
- H = 3/4" TEMPERATURE GAUGE
- J = 2" RELIEF VALVE
- K = 12" x 16" MANHOLE
- L = 24" NOMINAL FLUE DIAMETER



PROJECT: STANDARD BOILER



MODEL 3PW-350
363.1 BHP
125 PSI WATER

SPECIFICATIONS SUBJECT TO CHANGE WITHOUT NOTICE ALL CONNECTIONS ARE THREADED UNLESS OTHERWISE SPECIFIED

THIS DOCUMENT CONTAINS CONFIDENTIAL INFORMATION WHICH IS THE PROPERTY OF BURNHAM COMMERCIAL. THIS DOCUMENT MAY NOT BE REPRODUCED, TRANSFERRED OR USED, OR ITS CONTENTS DISCLOSED, WITHOUT THE WRITTEN PERMISSION OF THE OWNER.