

# BURNHAM®

## Commercial Boilers

### RATINGS AND DATA

Shell Diameter : 118"  
 Gross Output - BHP : 1100  
 Gross Output - MBH : 36822  
 Gross Output - Lbs/Hr : 37950  
 Net Rating - MBH : 28589  
 Net Rating - Sq. Ft. : 119120  
 Safety Valve - Lbs/Hr. : 42957

Heating Surface - Sq. Ft.  
 Fireside - 6000  
 Firetubes  
 Number - 454  
 Diameter - 2.5" O.D.

Firing Rate  
 1000 BTU Gas (MBH) - 46027  
 140000 BTU/Gal Oil (GPH) - 328.8  
 150000 BTU/Gal Oil (GPH) - 306.8

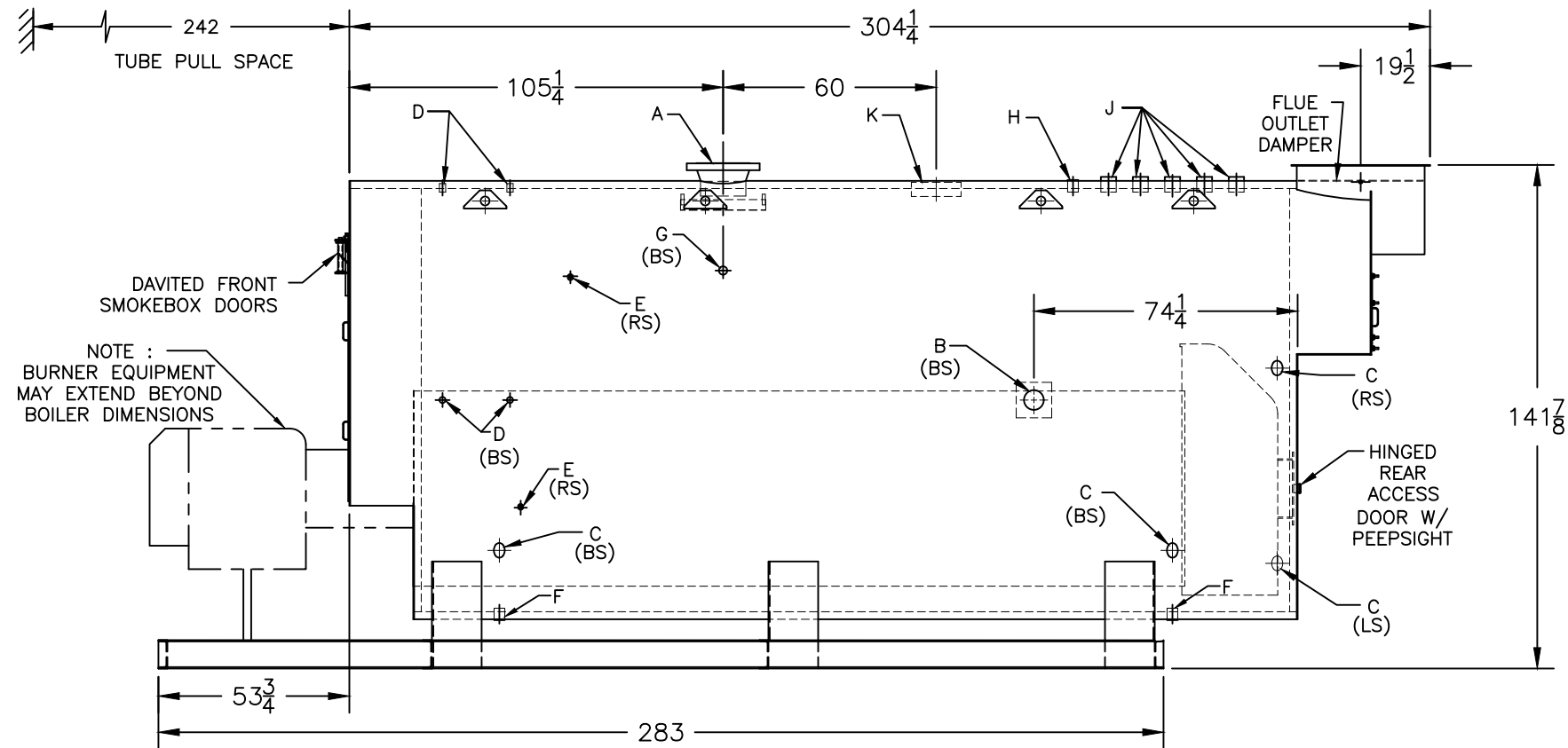
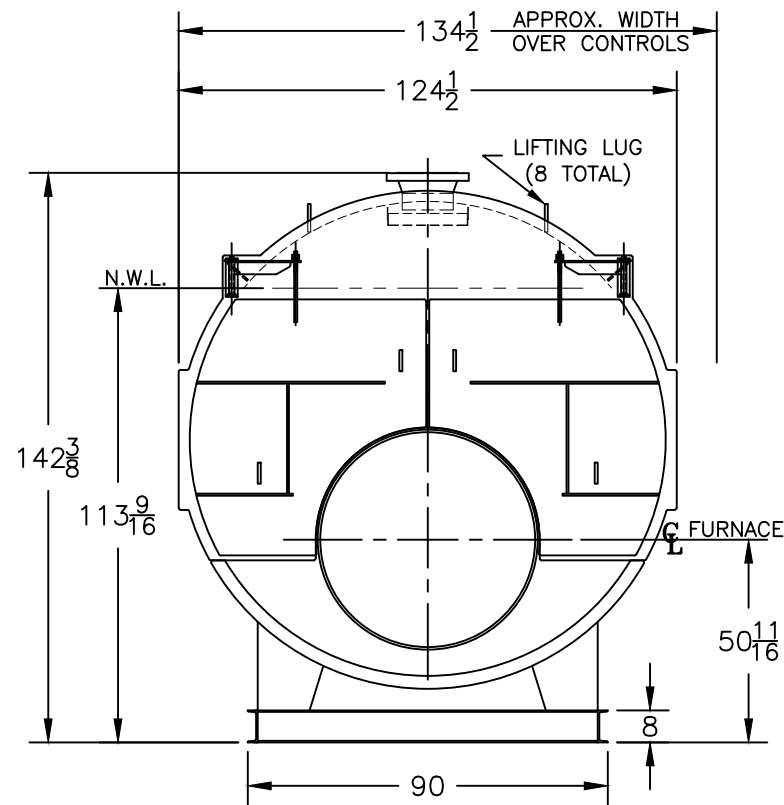
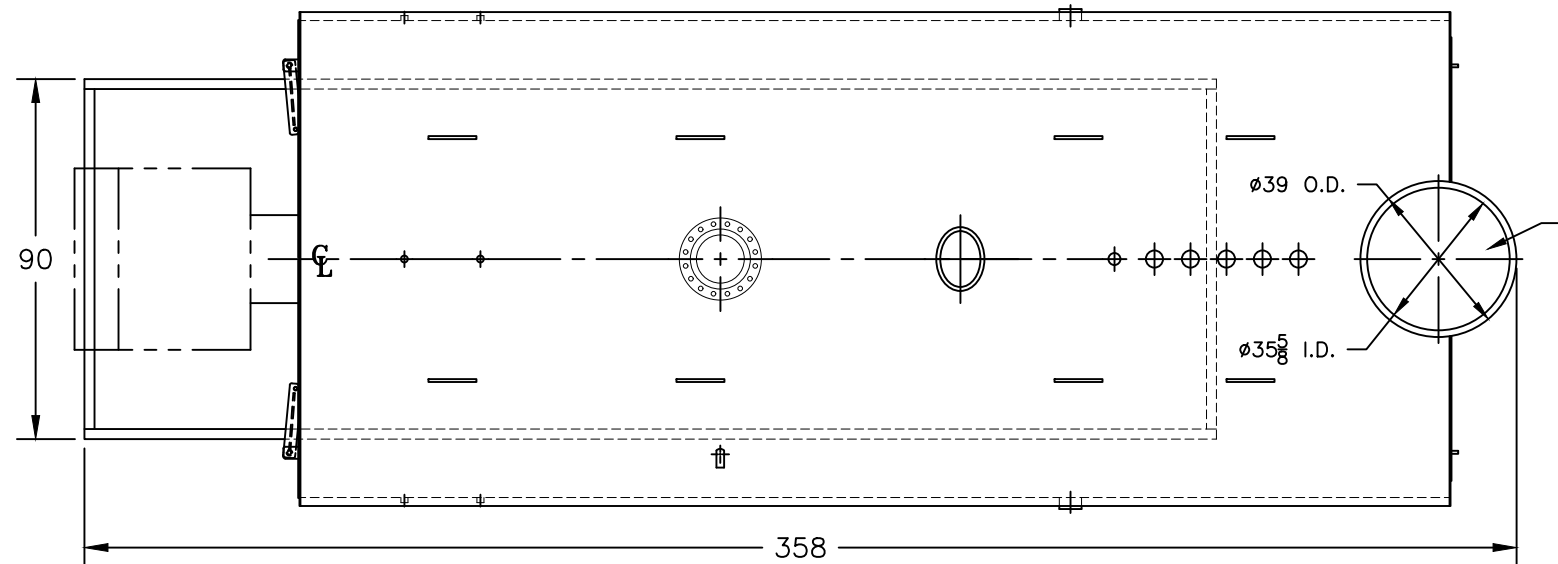
Water Content  
 Pounds - 38500  
 Gallons (U.S.) - 4600  
 Approximate Weight/LBS.  
 Dry - 72000  
 Wet - 110500

### LEGEND

BS = BOTH SIDES  
 RS = RIGHT SIDE

### LEGEND CONNECTIONS

- A = 12" FLANGED SUPPLY (300#)
- B = 4" RETURN
- C = 3" x 4" HANDHOLE
- D = 1" WATER COLUMN
- E = 3/4" AQUASTAT
- F = 2" BOTTOM BLOWDOWN
- G = 2" SURFACE BLOWOFF
- H = 2" AUXILIARY CONNECTION
- J = 3" SAFETY VALVE (5)
- K = 12" x 16" MANHOLE
- L = 36" NOMINAL FLUE DIAMETER



NOTE :  
 BURNER EQUIPMENT  
 MAY EXTEND BEYOND  
 BOILER DIMENSIONS

PROJECT: STANDARD BOILER

MODEL 3P-1100  
 1100 BHP  
 150 PSI STEAM